

# 68 Charles Street

Epping, Essex

Guide Price £550,000

Just a short walk to Epping tube and high street sits this three bedroom home packed with opportunity to add your own stamp. A perfect find for first-time buyers or commuters alike, this gorgeous cottage style home with its fabulous garden cabin is an absolute gem!

Council Tax band: D

Tenure: Freehold

- Chain free
- Driveway
- Ground floor WC
- Spacious primary bedroom
- Outhouse with electricity and heating
- Short walk to Epping station & high street
- Close to Ivy Chimneys Primary





**Lounge**

12' 3" x 11' 4" (3.73m x 3.45m)

**Dining Area**

12' 3" x 8' 7" (3.73m x 2.61m)

**Kitchen**

14' 6" x 10' 2" (4.42m x 3.10m)

**WC****Bedroom**

20' 6" x 10' 0" (6.24m x 3.04m)

**Bedroom**

11' 2" x 7' 7" (3.41m x 2.31m)

**Bedroom**

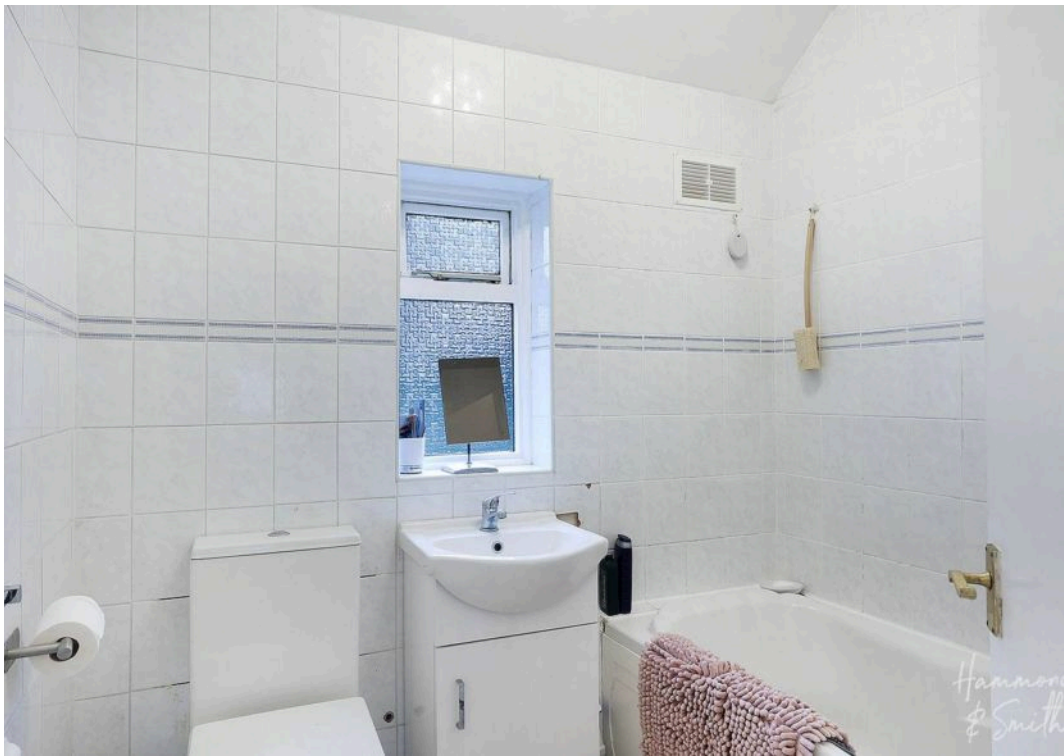
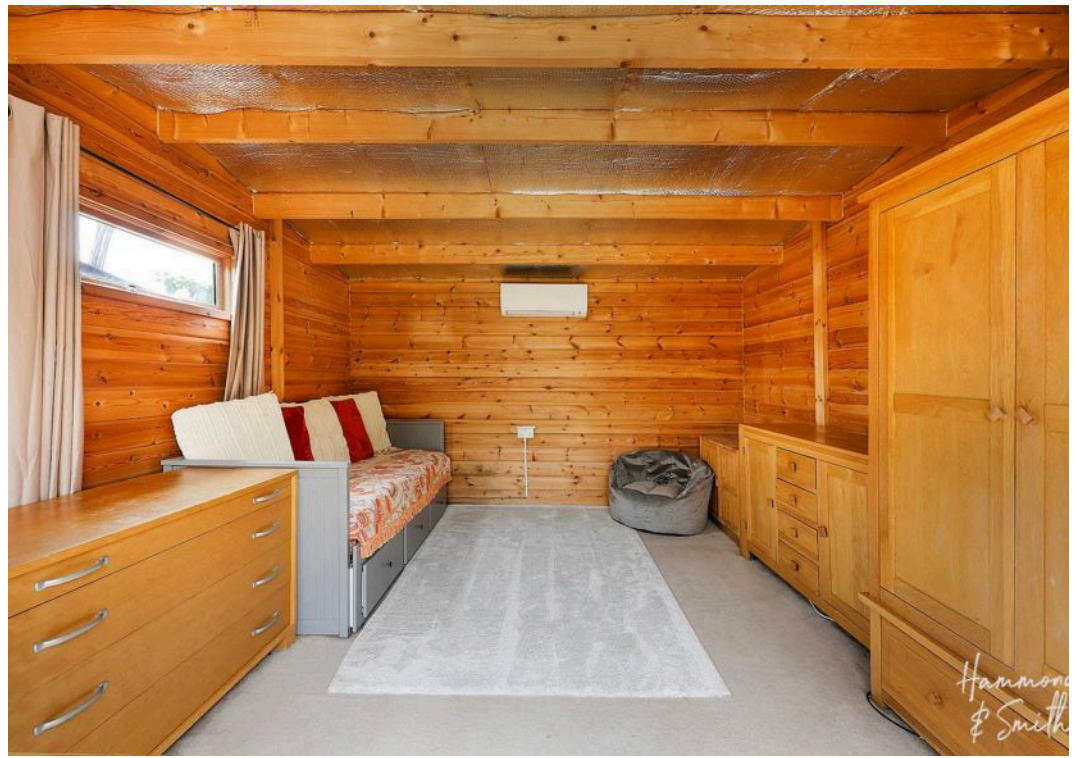
7' 6" x 7' 5" (2.28m x 2.27m)

**Bathroom**

6' 9" x 5' 10" (2.05m x 1.77m)



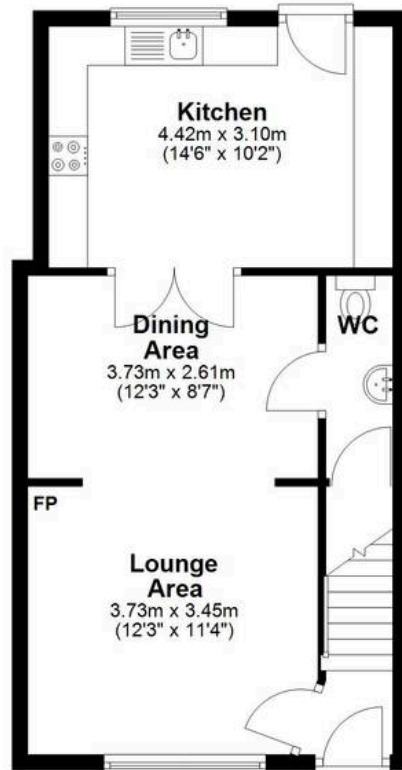






### Ground Floor

Main area: approx. 43.0 sq. metres (462.6 sq. feet)  
Plus outbuildings, approx. 15.5 sq. metres (166.5 sq. feet)



### First Floor

Approx. 40.4 sq. metres (435.3 sq. feet)



Main area: Approx. 83.4 sq. metres (897.9 sq. feet)

Plus outbuildings, approx. 15.5 sq. metres (166.5 sq. feet)