



Stoneacre
Properties



Laurel Hill Way, Leeds, LS15 9EW

£180,000

Located in Colton Village is this delightful first-floor apartment on Laurel Hill Way. This property is well-presented throughout, ensuring a warm and inviting atmosphere. The views from the property enhance the overall appeal, allowing you to enjoy the beauty of the surrounding area from the comfort of your home. Comprising: entrance with staircase leading to first floor, lounge, kitchen, two bedrooms and a bathroom. In addition there is a communal garden to the front and an allocated parking space. Early viewings are highly recommended as these apartments are not frequently offered for sale.

Entrance



Door to front. Staircase leading to living accommodation.

Lounge



To the rear is a double glazed window that offers lovely views.

Kitchen



Fitted with a range of wall and base units with work surfaces over incorporating a sink and drainer unit. Electric oven and gas hob. Plumbing for washing machine. Space for fridge/freezer. Double glazed window to the the rear.

Bedroom One



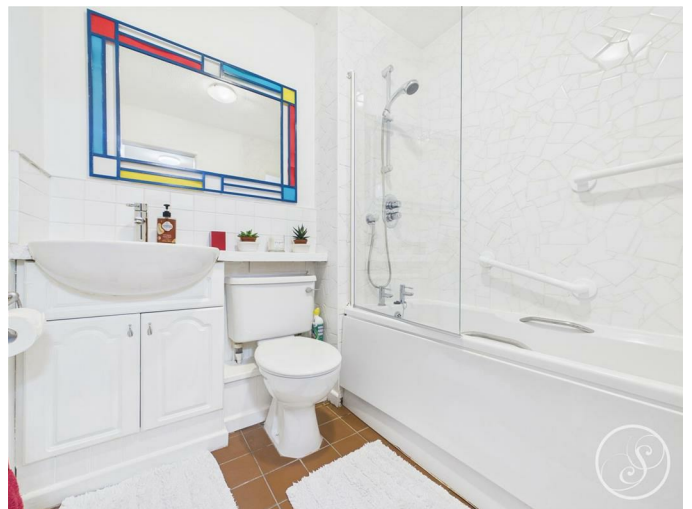
To the front is a double glazed window. Central heating radiator. Built in storage cupboard.

Bedroom Two



To the front is a double glazed window. Central heating radiator. Built in wardrobes.

Bathroom



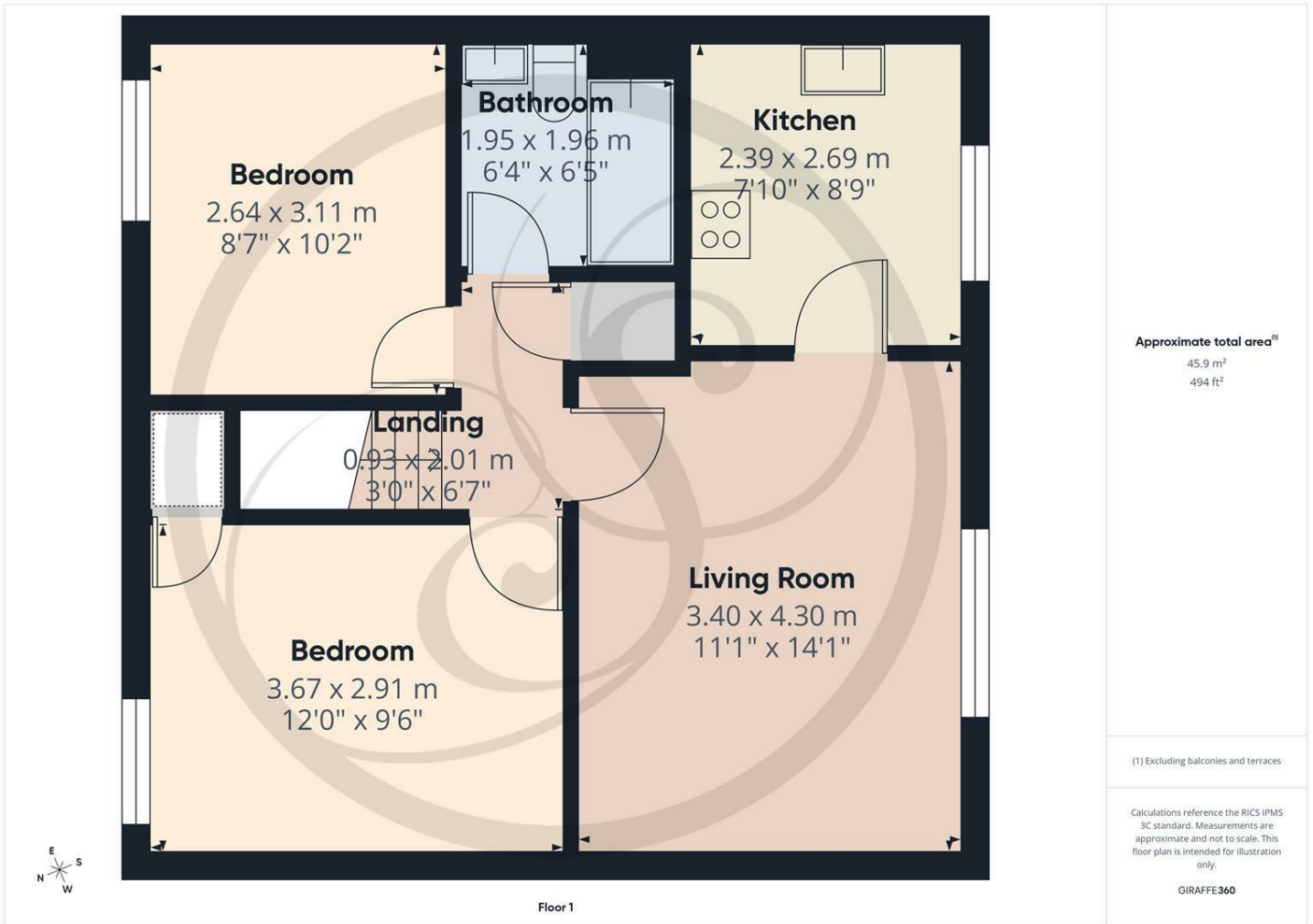
Fitted with a white suite comprising: bath with shower over, wash hand basin and wc. In addition there is a central heating radiator.

External

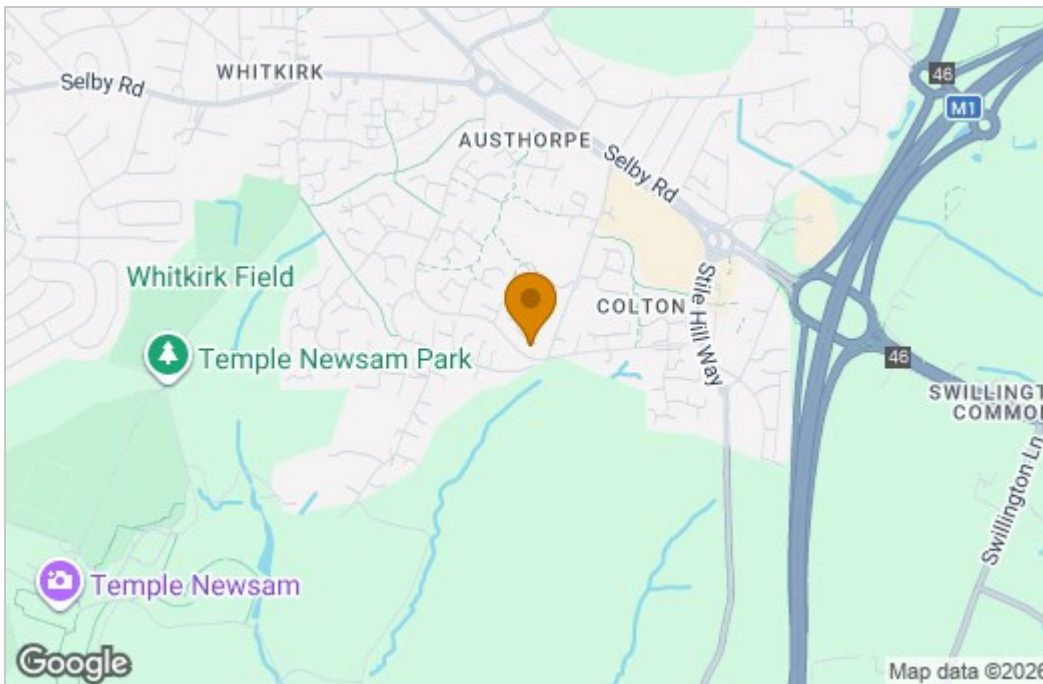


To the rear is a communal garden. Allocated parking space.

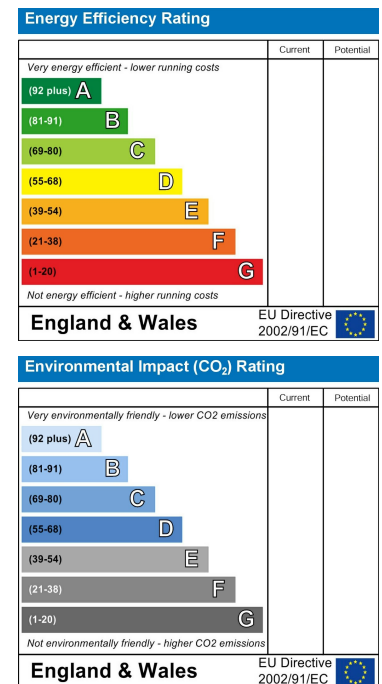
Floor Plan



Area Map



Energy Efficiency Graph



These particulars, whilst believed to be accurate are set out as a general outline only for guidance and do not constitute any part of an offer or contract. Intending purchasers should not rely on them as statements of representation of fact, but must satisfy themselves by inspection or otherwise as to their accuracy. No person in this firm's employment has the authority to make or give any representation or warranty in respect of the property.

1 Colton Road, Leeds, West Yorkshire, LS15 9AA
 Tel: 0113 260 9111 Email: east@stoneacreproperties.co.uk <https://www.stoneacreproperties.co.uk>

View properties before they come on the market by following us on Instagram - @stoneacreproperties

