



Seabreeze Drive

Guide Price £250,000 - £260,000

- Guide price £250,000 to £260,000
- Three-bedroom town house
- Ground floor study/bedroom
- En-suite to principal bedroom
- Driveway and integral garage
- Enclosed, low-maintenance rear garden
- EPC Rating: C



 3  3  2

Pinkmove

01633 746088
team@pinkmove.co.uk



About the property

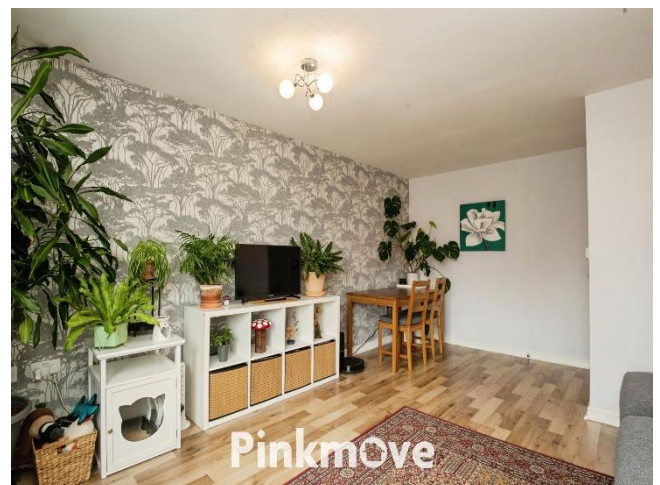
This well-presented and spacious three-bedroom town house is situated in a sought-after residential area of Newport, offering excellent access to local amenities, public transport links, and the M4 motorway, making it ideal for commuters to both Cardiff and Bristol.

Arranged over three floors, the property provides versatile and well-proportioned accommodation throughout.

The ground floor comprises a welcoming entrance hallway leading to a convenient shower room, a utility room with direct access to the rear garden, and an additional reception room which can be used as a study, home office or third bedroom.

To the first floor is a generous open-plan lounge/diner, offering ample space for both relaxing and dining. The separate fitted kitchen benefits from a range of base and eye-level units, good worktop space, and room for essential appliances.

The second floor offers two well-sized double bedrooms, including a principal bedroom with a modern en-suite shower room. A contemporary family bathroom with shower over bath serves the remaining bedroom.





Accommodation

Study

Utility

Shower Room

Garage

Lounge

Kitchen

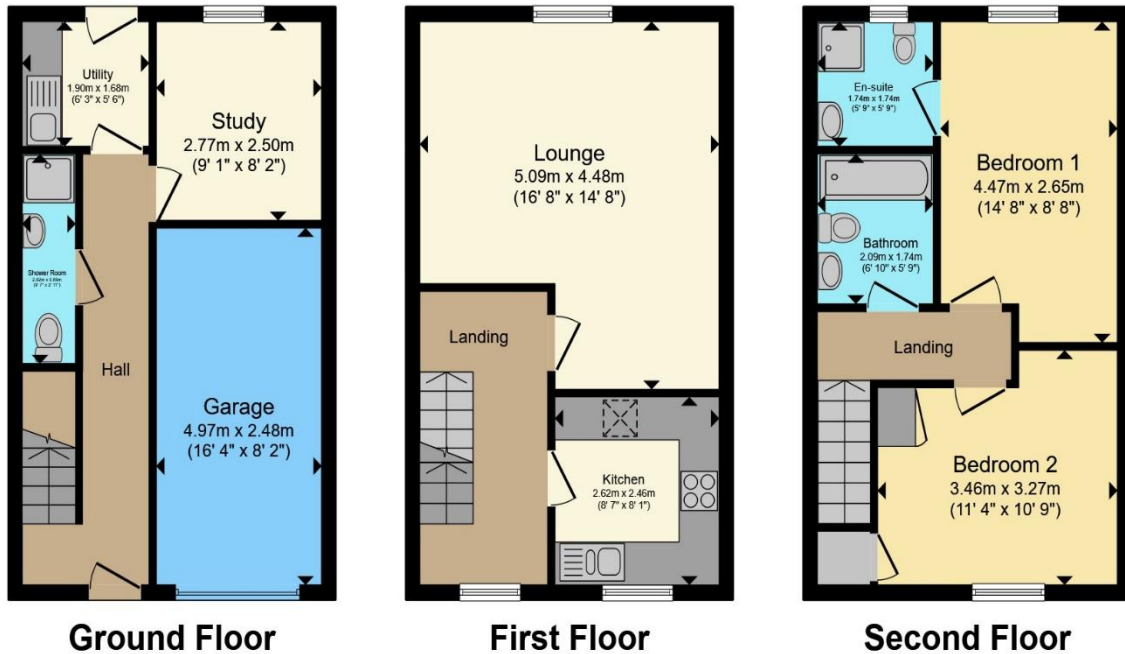
Bedroom 1

En-Suite

Bedroom 2

Bathroom

Floorplan



Total floor area 105.5 sq.m. (1,135 sq.ft.) approx

This floor plan is for illustrative purposes only. It is not drawn to scale. Any measurements, floor areas (including any total floor area), openings and orientation are approximate. No details are guaranteed, they cannot be relied upon for any purpose and they do not form part of any agreement. No liability is taken for any error, omission or misstatement. A party must rely upon its own inspection(s). Powered by www.localagent.com

Pinkmove

Important Information

Note while we endeavour to make our sales details accurate and reliable, if there is any point which is of particular interest to you, please contact the office and we will be pleased to confirm the position for you. We have not personally tested any apparatus, equipment, fixtures, fittings or services and cannot verify they are in working order or fit for their purposes. Nothing in these particulars is intended to indicate that carpets or curtains, furnishings or fittings, electrical goods (whether wired or not). Gas fires or light fittings or any other fixtures not expressly included form part of the property offered for sale. This computer generated Floorplan, if applicable, is intended as a general guide to the layout and design of the property. It is not to scale and should not be relied upon for dimensions. Tenure: We cannot confirm the tenure of the property as we have not had access to the legal documents. The buyer is advised to obtain verification from their solicitor or surveyor.

Peter Alan Limited is registered in England and Wales under company number 2073153, Registered Office is Cumbria House, 16-20 Hockliffe Street, Leighton Buzzard, Bedfordshire, LU7 1GN. VAT Registration Number is 500 2481 05. For activities relating to regulated mortgages and non-investment insurance contracts, Peter Alan Limited is an appointed representative of Connells Limited which is authorised and regulated by the Financial Conduct Authority. Connells Limited's Financial Services Register number is 302221. Most buy-to-let

