



Rolfe Terrace, SE18

£290,000

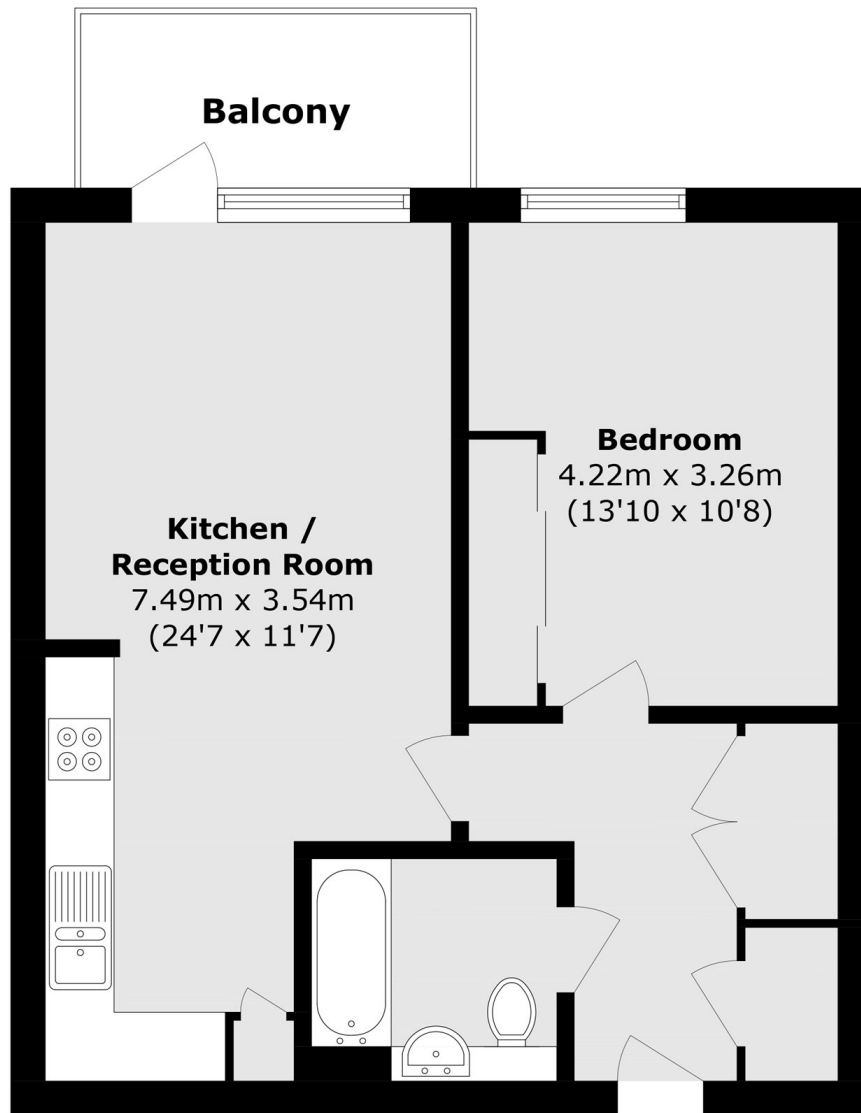
Located on the first floor of the popular Moy Lane development, this well-presented and naturally bright one bedroom apartment offers modern, low-maintenance living and comes with the benefit of being chain free. The property features an open plan kitchen with integrated appliances, flowing into the reception room with access to a private balcony, allowing plenty of natural light to fill the space. There is a well-proportioned double bedroom with built-in wardrobes, alongside a contemporary bathroom. This property would be an ideal first purchase or investment.

Moy Lane is well positioned for Woolwich town centre, offering a range of shops, cafés and amenities. Woolwich Arsenal station and the Elizabeth Line, DLR and mainline services are within a 5-7 minute walk, while the River Thames and nearby green spaces are also within easy reach.

Features

- One Bedroom Apartment
- Private Balcony
- Quiet and Residential Development
- Five Minutes From Elizabeth Line
- Chain Free

Rolfe Terrace, London, SE18



Total area (approx.): 51.7 sq. m (556.4 sq. ft)
Balcony total (approx.): 5.4 sq. m (58.1 sq. ft)