



Edith Villas, W14

£375,000

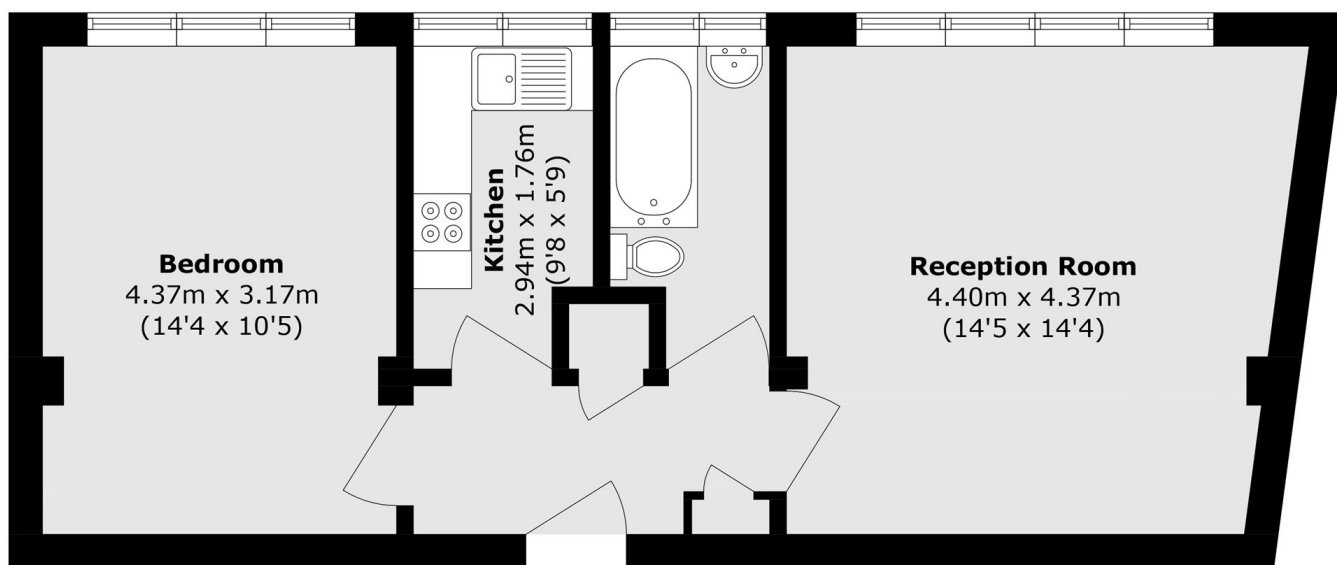
A spacious and bright one bedroom apartment situated in a popular portered development. The property is well located to the tubes, shops and restaurants and would make an ideal first home or buy to let investment.

West Kensington Court is conveniently located within two hundred yards to West Kensington underground station. The numerous facilities in Earls Court and Kensington are within a mile.

Features

- Share Of Freehold
- One Bedroom
- Lift Service
- Communal Heating
- No Chain
- Close To Tubes

Edith Villas, London, W14



Third Floor

Total area (approx.): 48.2 sq. m (518.8 sq. ft)