



4 Bentley Walk
Corby, NN18 0PG

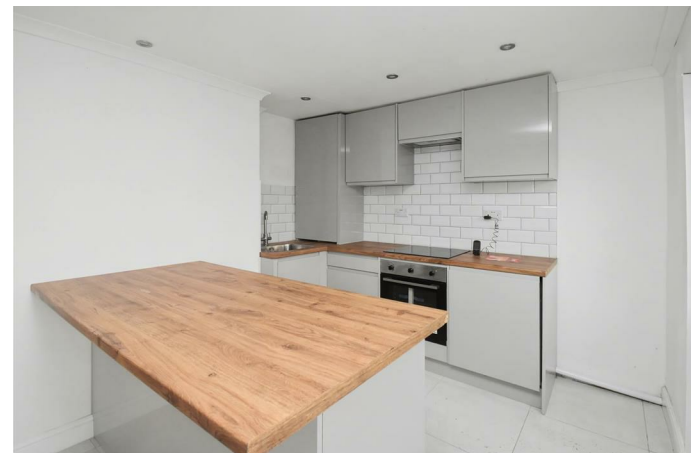


Simpson West

Simpson West are delighted to offer for sale, with NO CHAIN, this beautifully renovated three-bedroom semi-detached home, located in the popular Beanfield area of Corby. Recently updated throughout, this property is ideal for first-time buyers and benefits from a convenient location within walking distance of local schools, shops, and Corby town centre. The ground floor offers a spacious lounge featuring a bay window, alongside a modern open-plan kitchen/diner, perfect for both everyday living and entertaining. To the first floor are three well-proportioned bedrooms, two of which benefit from built-in wardrobes, along with a brand new spacious three-piece family bathroom. Externally, the front of the property boasts a low-maintenance lawn, enclosed by timber fencing and hedging. To the rear is fully enclosed garden with a large patio entertaining area leading to a low maintenance landscaped lawn with newly seeded grass, pebble-dashed areas to the back and gated off-road parking accessed via double timber gates from Barnsley square. Council tax band: A. EPC Rating: D

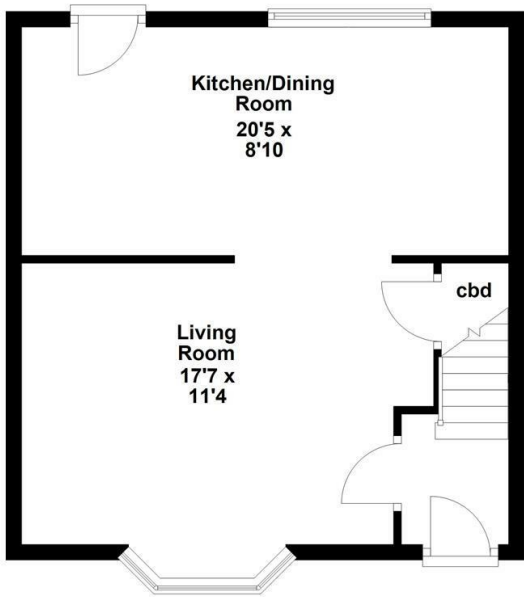
Early viewing is highly recommended.

£204,950

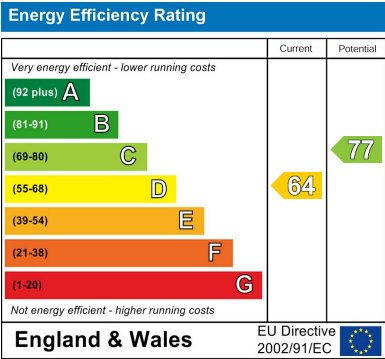
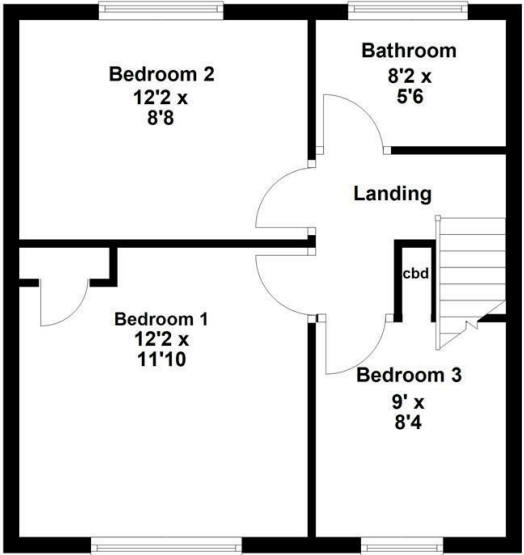


Simpson West

Ground Floor



First Floor



When you buy with Simpson West, you know **you'll be in safe hands**. From the moment you walk through our doors, we'll make you **feel truly welcome**. Our sales consultants and financial advisors will take you through **every step of the process**, offering **free expert advice** along the way, from help choosing the right mortgage and insurance through to finding your conveyancer. And if you need help selling your home too, **with over 20 years of local experience, you can trust us to get you moving**.



**Simpson
West**

Making Every
Journey Personal



01536 202007

info@simpsonwest.co.uk

<https://www.simpsonwest.co.uk/>

64 Corporation Street, Corby, Northants, NN17 1NH