





£625,000

Situated in the sought after Buckinghamshire village of Aston Clinton this beautifully presented four bedroom detached family home provides easy access to all local amenities and nearby train stations. The property offers an open plan fitted kitchen/dining room, separate lounge, main bedroom with en suite shower room, downstairs cloakroom, enclosed gardens, garage and driveway.

Property Description

ENTRANCE

Door to:

ENTRANCE HALL

Radiator, stairs rising to first floor.

CLOAKROOM

Double glazed frosted window to rear aspect. Low level WC, pedestal wash hand basin, radiator.

LOUNGE

A double aspect room with two double glazed windows to front aspect and double glazed bay window with fitted bench seating to side aspect. Two radiators, under stairs storage cupboard.

KITCHEN/DINING ROOM

Two double glazed windows to front aspect and double glazed double doors to side. Fitted with a range of wall-mounted and floor standing units with work surface over, integrated dishwasher, washing machine, fridge and freezer, built-in oven and gas hob with extractor fan over, one and a half bowl sink unit with mixer tap, concealed wall-mounted gas boiler, two radiators.

LANDING

Double glazed window to rear aspect. Access to loft space, storage cupboard.

BEDROOM ONE

Two double glazed windows to front aspect. Range of built-in wardrobes, radiator, door to en-suite.

EN-SUITE

Double glazed frosted window to side aspect. Tiled shower cubicle, low level WC, wash hand basin, radiator.

BEDROOM TWO

Double glazed windows to front and side aspects. Radiator.

BEDROOM THREE

Double glazed window to side aspect. Radiator.

BEDROOM FOUR

Double glazed window to rear aspect. Radiator.

BATHROOM

Double glazed frosted window to rear aspect. Panelled bath with shower over, low level WC, wash hand basin, heated towel rail.

OUTSIDE

GARAGE

Garage with up and over door, power and lighting.

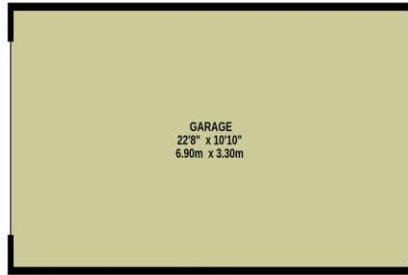
FRONT GARDEN

Pathway to front door with flower and shrub beds, driveway parking leading to garage.

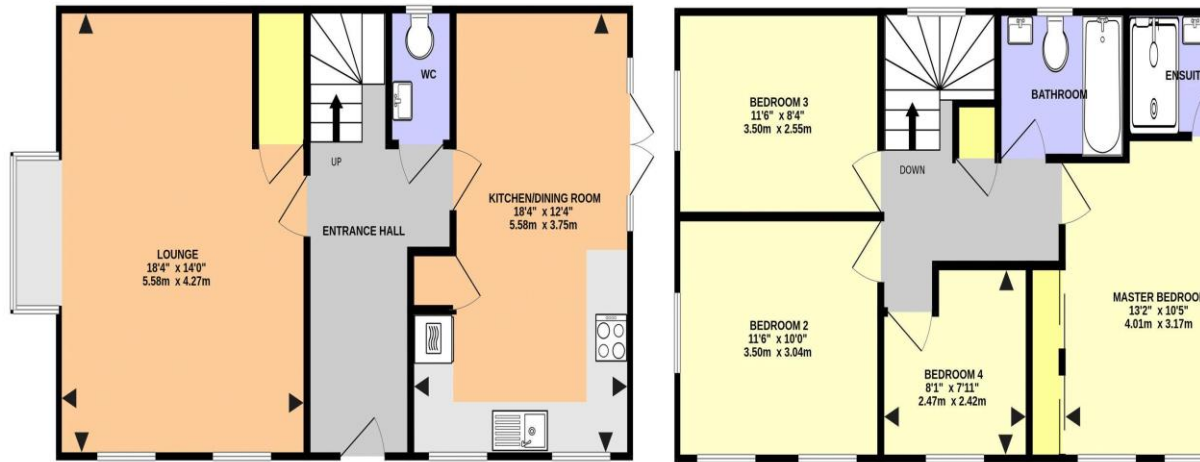
REAR GARDEN

Mainly laid to lawn with paved patio area, all enclosed by walling and fencing, gated side access.

GROUND FLOOR
852 sq.ft. (79.1 sq.m.) approx.



1ST FLOOR
589 sq.ft. (54.7 sq.m.) approx.



WARING CRESCENT, ASTON CLINTON HP22 0AB (PRODUCED FOR MICHAEL ANTHONY)

TOTAL FLOOR AREA: 1441 sq.ft. (133.8 sq.m.) approx.

No accuracy to this image, text or measurements is guaranteed
Made with Metropix ©2025

MONEY LAUNDERING REGULATIONS 2017 intending purchasers will be asked to produce identification and proof of financial status when an offer is received. We would ask for your co-operation in order that there will be no delay in agreeing the sale.

THE CONSUMER PROTECTION REGULATIONS 2008 The Agent has not tested any apparatus, equipment, fixtures and fittings or services and so cannot verify that they are in working order or fit for the purpose. A Buyer is advised to obtain verification from their Solicitor or Surveyor. References to the Tenure of a Property are based on information supplied by the Seller. The Agent has not had sight of the title documents. A Buyer is advised to obtain verification from their Solicitor. You are advised to check the availability of this property before travelling any distance to view. We have taken every precaution to ensure that these details are accurate and not misleading. If there is any point which is of particular importance to you, please contact us and we will provide any information you require. This is advisable, particularly if you intend to travel some distance to view the property. The mention of any appliances and services within these details does not imply that they are in full and efficient working order. These particulars are in draft form awaiting Vendors confirmation of their accuracy. These details must therefore be taken as a guide only and approved details should be requested from the agents

79 High Street Tring Herts HP23 4AB
01442 891177 | tring@maea.co.uk