



Charleville Mews, TW7

£575,000

A well-presented, two double bedroom apartment set within a riverside development. This property comes with two bathrooms, an open-plan kitchen/reception room with direct river views, secure underground parking and a newly renewed lease.

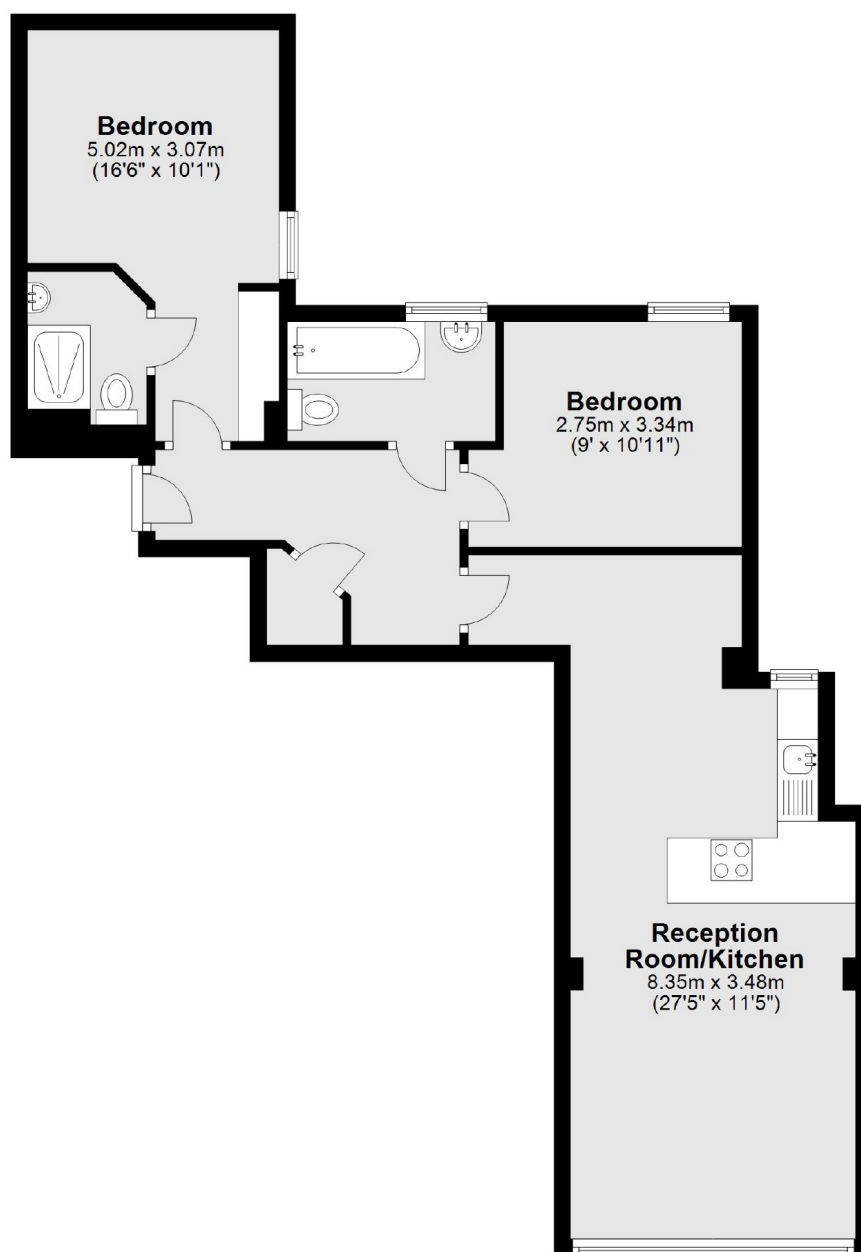
Located on the River Thames with its tow path stroll into Richmond with its mainline train station and the district line service. St Margarets village with its boutique shops and restaurants is only 0.7 miles away. Syon Park and Redlees Park are close by.

Features

- Two Double Bedrooms
- Two Bathrooms
- Secure Underground Parking
- Riverside Development
- Newly Renewed Lease
- Secure Bicycle Storage

Charleville Mews, Old Isleworth, TW7

Second Floor



Total area: approx. 63.5 sq. metres (683.6 sq. feet)