



Connaught House

Clifton Gardens, W9

£3,600 per month
(£830.77 per week)

A charming two bedroom, two bathroom apartment set on the second floor of this white stucco period conversion.

CHESTERTONS



Connaught House

Clifton Gardens, W9

- Two Bedroom
- Two Bathroom
- Communal Gardens
- Balcony
- Ample Storage



A charming two bedroom, two bathroom apartment set on the second floor of this white stucco period conversion.

Accommodation comprises of a cleverly designed living area with lots of natural light and views of the communal gardens, well equipped separate kitchen, superb master bedroom with en suite, second double bedroom and a shower room.

The property benefits from access to a glorious communal garden which includes a tennis court and there is also off street parking. Set back off Clifton Gardens, this apartment is perfectly located for the amenities of Little Venice. Warwick Avenue Underground is very

Minimum Term: 12 months
Deposit Required: 5 weeks
Local Authority: City of Westminster
Council Tax Band: G
EPC Rating: C
Furnished

Score	Energy rating	Current	Potential
92+	A		
81-91	B		
69-80	C	76 C	79 C
55-68	D		
39-54	E		
21-38	F		
1-20	G		

Chestertons Little Venice Lettings

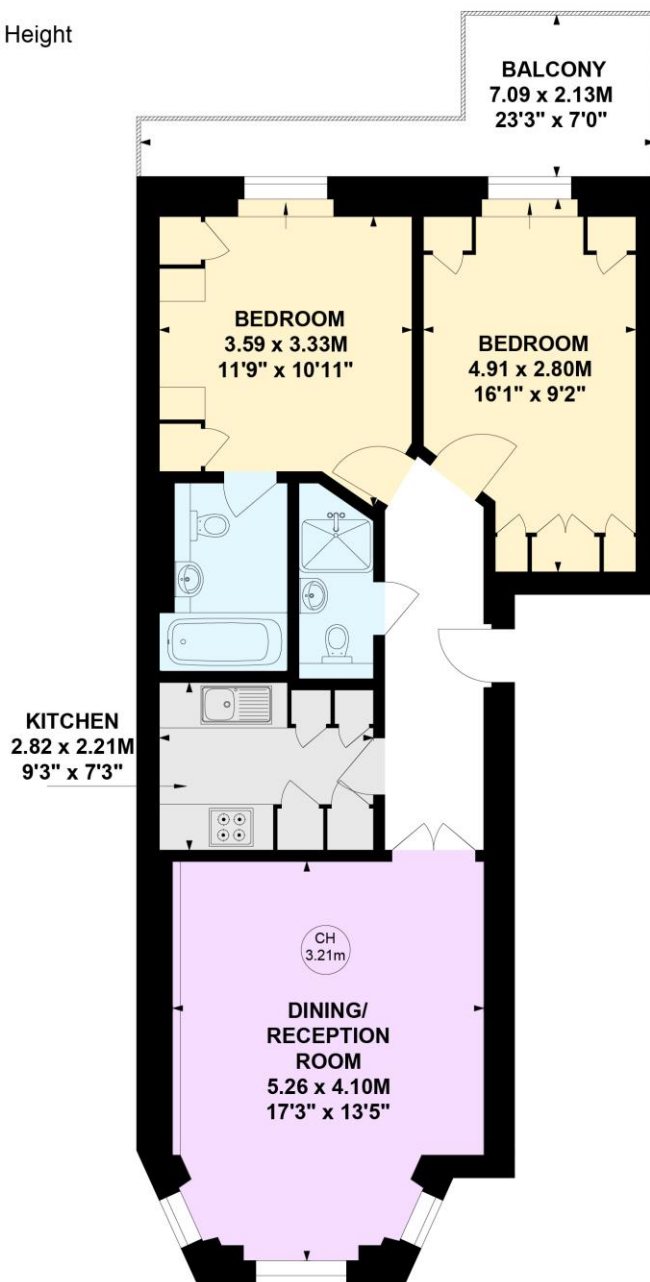
26 Clifton Road
Maida Vale
London
W9 1SX
littlevenicetlettingsusers@chestertons.co.uk
02072662369
chestertons.co.uk

Additional tenant charges apply (fees apply to non-AST tenancies only)
Tenancy Agreement Fee: £300
References per Tenant/Guarantor: £60
Inventory check (approx. £100 – £250 inc. VAT)
chestertons.co.uk/property-to-rent/applicable-fees

Clifton Gardens, W9

Approximate gross internal area
66.00 sq m / 710 sq ft

Key :
CH - Ceiling Height



First Floor

This plan is not to scale and must be used as layout guidance only. All measurements and areas are approximate and should not be relied upon to provide accurate information. This plan must not be relied upon when making property valuations, design considerations or any other such relevant decisions. We accept no responsibility or liability (whether in contract, tort or otherwise) in relation to any loss whatsoever arising from or in connection with any use of this plan or the adequacy, accuracy or completeness of it or any information within it.

