



Newport, Barton-upon-Humber, North Lincolnshire

£179,950





lovelle

Key Features

- ****NO CHAIN****
- Total Floor Area: 94 Square Metres
- Lounge & Dining Room
- Fully Equipped Kitchen
- Three Double Bedrooms
- En-Suite & Family Bathroom
- Downstairs WC & Outside WC
- Enclosed Rear Garden
- Integral Garage
- Spacious Workshop/Barn
- EPC rating D





DESCRIPTION

****NO CHAIN****

Situated in the heart of historic market town of Barton Upon Humber is this terraced family home. Ready for someone new to make it their own.

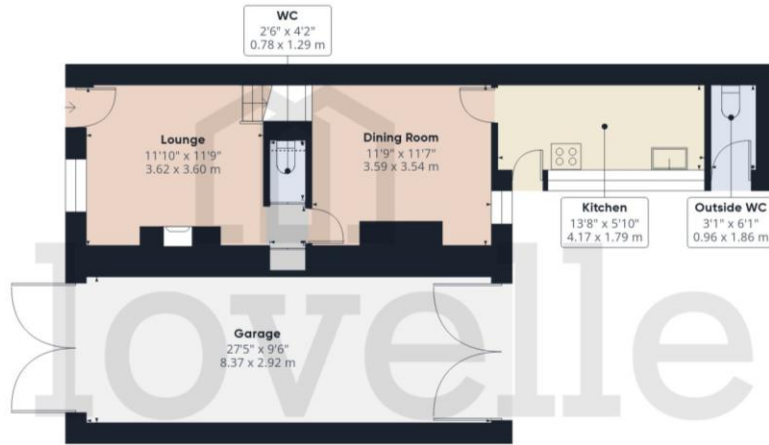
This generously proportioned accommodation includes three double bedrooms, with the principal one benefitting from an en-suite and the rest from a family bathroom. While the ground floor encompasses a cosy lounge and a dining room. With an adjacent fully equipped kitchen. Not to forget, the downstairs WC, adding versatility and convenience.

Finished by a fully enclosed rear garden with a spacious workshop/barn, garage and an outside WC. Offering immense potential to the property.

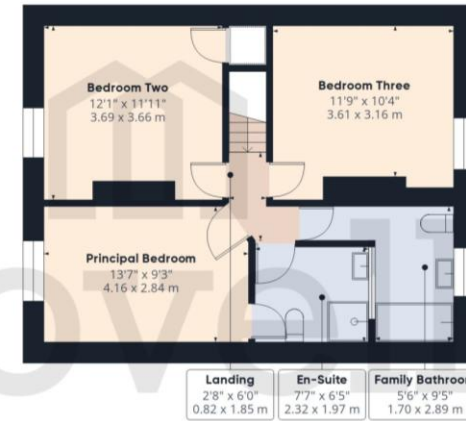
VIEWING HIGHLY RECOMMENDED!



FLOORPLAN



Ground Floor Building 1



Floor 1 Building 1



Ground Floor Building 2



Floor 1 Building 2

Newport, Barton-upon-Humber, North Lincolnshire

TENURE

The Tenure of this property is Freehold.

COUNCIL TAX

Band A

VIEWING

By appointment with the Sole Agent Lovelle Estate Agency, telephone 01652 636587. We recommend prior to making an appointment to view, prospective purchasers discuss any particular points likely to affect their interest in the property with one of our property consultants who have seen the property in order that you do not make a wasted journey.

MORTGAGE ADVICE

Budgeting correctly and choosing the right mortgage for a move is vital. For independent mortgage and insurance advice call our mortgage advisor on 01652636587 to arrange an appointment.

AGENTS NOTE

These particulars are for guidance only. Lovelle Estate Agency, their clients and any joint agents give notice that:- They have no authority to give or make representation/warranties regarding the property, or comment on the SERVICES, TENURE and RIGHT OF WAY of any property. These particulars do not form part of any contract and must not be relied upon as statements or representation of fact. All measurements/areas are approximate. The particulars including photographs and plans are for guidance only and are not necessarily comprehensive.

SKB Estates Limited T/A Lovelle Estate Agency

HOW TO MAKE AN OFFER

If you are interested in this property then it is important that you contact us at your earliest convenience. We will require certain pieces of personal information from you in order to provide a professional service to you and our client. The personal information you have provided to us may be shared with our client, the seller, but it will not be shared with any other third parties without your consent other than stated reasons detailed within our privacy policy. More information on how we hold and process your data is available on our website <https://www.lovelle.co.uk/privacy-policy/> and you can opt out at any time by simply contacting us.

For any offer you wish to make we will need to establish certain details before negotiation can take place. This is so that our vendor can make an informed choice when negotiating and accepting your offer. You will be asked to provide formal I.D. and address verification, as required under new Money Laundering Legislation. You might also have one or two questions for us, such as which solicitor to choose, or which mortgage lender has the best offers available for me. We have a one stop shop to satisfy all of these needs so please ask.

Score	Energy rating	Current	Potential
92+	A		
81-91	B		84 B
69-80	C		
55-68	D	61 D	
39-54	E		
21-38	F		
1-20	G		

A copy of the full Energy Performance Certificate for this property is available upon request. Advisory Notes - Please be advised if you are considering purchasing a property for Buy To Let purposes, from 1st April 2018 without an EPC rated E or above it will not be possible to issue a new tenancy, or renew an existing tenancy agreement.

Follow us on:



ENTRANCE

Entered through a half glazed UPVC door into the hallway. Doors to all principal rooms and a staircase to the first floor accommodation.

LOUNGE 3.62m x 3.6m (11'11" x 11'10")

A feature fireplace housing a cast iron stove sitting on a tiled hearth, perfect for those cold winter evenings. Window to the front elevation.

DINING ROOM 3.59m x 3.54m (11'10" x 11'7")

A feature brick fireplace housing an electric fire on a tiled hearth, perfect for those cold winter evenings. Window to the rear elevation.

KITCHEN 4.17m x 1.79m (13'8" x 5'11")

Range of wall and base units with contrasting work surfaces and tiled splashbacks. Stainless steel sink with and drainer with a swan neck mixer tap. Plumbing for a washing machine, space for a further under counter appliance and a tall fridge freezer. Freestanding four ring gas cooker with an oven. Windows and a half glazed UPVC door to the side elevation.

WC 0.78m x 1.29m (2'7" x 4'2")

Push button WC with an integral wash hand basin.
Chrome effect towel rail radiator.

FIRST FLOOR ACCOMMODATION:

PRINCIPAL BEDROOM 4.16m x 2.84m (13'7" x 9'4")

Window to the front elevation and a door to the en-suite.

EN-SUITE 2.32m x 1.97m (7'7" x 6'6")

White three piece suite incorporating a shower cubicle with a shower over, push button WC and a vanity wash hand basin with a mixer tap. Waterproof panelling to the wet areas.

BEDROOM TWO 3.69m x 3.66m (12'1" x 12'0")

Window to the front elevation and a handy storage cupboard.

BEDROOM THREE 3.61m x 3.16m (11'10" x 10'5")

Window to the rear elevation.

FAMILY BATHROOM 1.7m x 2.89m (5'7" x 9'6")

White three piece bathroom suite incorporating a bathtub with a shower over, push button WC and a pedestal wash hand basin with hot and cold water taps. Decorative tiles throughout and a window to the rear elevation.

OUTSIDE THE PROPERTY:**FRONT ELEVATION**

Access to the garage and rear garden.

GARAGE 8.37m x 2.92m (27'6" x 9'7")

Double opening wooden doors, power and lighting.

REAR ELEVATION

Fully enclosed by brick walls and offering privacy from the surrounding properties. Predominantly laid to lawn with a patio and mature shrubbery. Finished by a spacious workshop/barn.

WORKSHOP/BARN:

Power and lighting.

FLOOR 1 3.39m x 6.35m (11'1" x 20'10")

FLOOR 2 3.42m x 5.61m (11'2" x 18'5")

OUTSIDE WC 0.96m x 1.86m (3'1" x 6'1")

Push button WC.

LOCATION

Barton-upon-Humber is a highly regarded historic market town with Primary and Senior schools, quaint shops, supermarkets, stylish restaurants, cosy pubs, charming coffee shops and two petrol stations. It benefits from numerous recreational facilities and is surrounded by open countryside. The distinctive Churches, library, wildlife reserves and popular museums allow you to enjoy peace and tranquillity whilst the shopping and nightlife of neighbouring towns means you are never far away from a faster pace of life!

BROADBAND TYPE

Standard- 18 Mbps (download speed), 1 Mbps (upload speed),
Superfast- 80 Mbps (download speed), 20 Mbps (upload speed),
Ultrafast - 1000 Mbps (download speed), 600 Mbps (upload speed).

MOBILE COVERAGE

Outdoors - Great,
Indoors - Great,
Available - O2, Vodafone, EE, Three.

*

We are required by law to conduct anti-money laundering checks on all those selling or buying a property. Whilst we retain responsibility for ensuring checks and any ongoing monitoring are carried out correctly, the initial checks are carried out on our behalf by Landmark who will contact you once you have had an offer accepted on a property you wish to buy. The cost of these checks for buyers is £20.00 (incl. VAT) per client, which covers the cost of obtaining relevant data and any manual checks and monitoring which is required. This fee will need to be paid by you in advance of us issuing a memorandum of sale, directly to Landmark, and is non-refundable. We will receive some of the fee taken by Landmark to compensate for its role in the provision of these checks.

