

FREEHOLD



House - Mid Terrace

7 FITTON STREET, LOSTOCK GRALAM, NORTHWICH, CW9 7PW

£199,950

FEATURES

- Recently refurbished throughout
- Sought-after Lostock Gralam location
- Ideal first-time home or investment opportunity
- Modern fitted kitchen
- Off street parking
- Chain free



ACOBAS

3 Bedroom House - Mid Terrace located in Northwich

Ground Floor

Upon entry, you are welcomed into a well-proportioned living room featuring a built-in TV/mirror unit and feature fireplace with brick surround. This flows through to a separate dining room, well suited to both entertaining and everyday family living. Beyond sits the modern fitted kitchen, offering sleek cabinetry, quality work surfaces and access to the rear courtyard. A stylish, ground-floor three piece bathroom completes the accommodation, finished to a high standard following the recent refurbishment. The property further benefits from double-glazed windows throughout.

First Floor

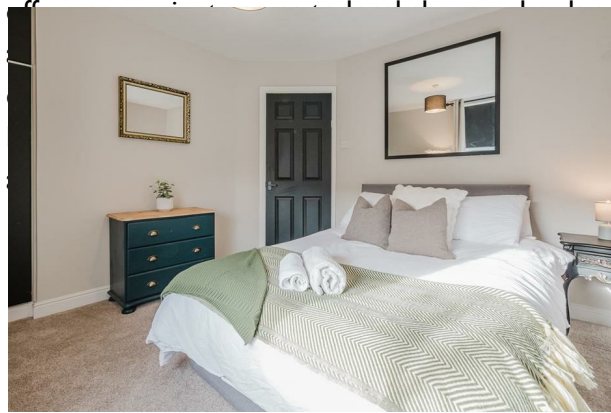
The first floor provides three well-presented bedrooms, including a generous principal bedroom with cast iron fireplace, as well as two further rooms, ideal for guest accommodation, a home office or nursery use. A modern first-floor WC adds further practicality and convenience.

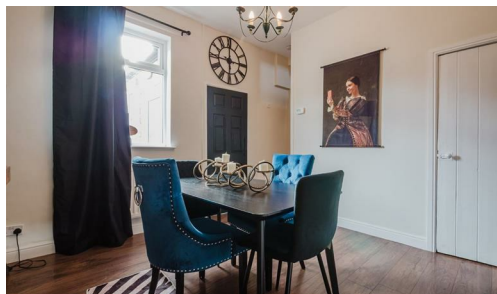
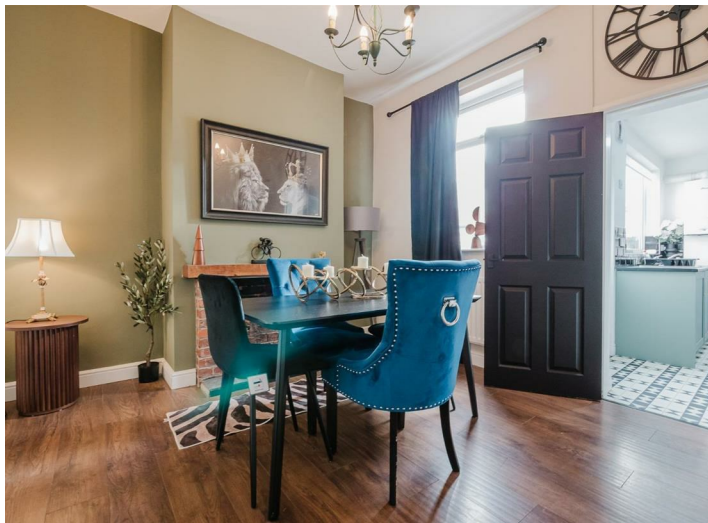
Externally

To the rear, the property enjoys a low-maintenance courtyard garden, ideal for outdoor seating and al fresco dining.

Location

Situated in the popular village of Lostock Gralam, the property





CHESHIRE | 25 PRINCESS STREET, KNUTSFORD, CHESHIRE, WA16 6BW

Call us on

01565 396 356

Info@acobas.co.uk

www.acobas.co.uk

Council Tax Band

A

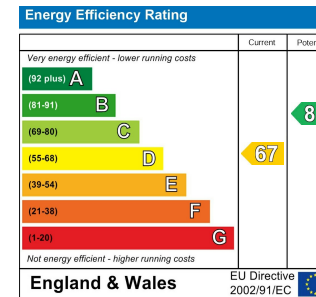


GROUND FLOOR

FIRST FLOOR

TOTAL: 797 sq. ft, 74 m²
 GROUND FLOOR: 463 sq. ft, 43 m², FIRST FLOOR: 334 sq. ft, 31 m²
 EXCLUDED AREAS: WALLS: 99 sq. ft, 10 m²

SIZES AND DIMENSIONS ARE APPROXIMATE. ACTUAL MAY VARY.



Agents Note: Whilst every care has been taken to prepare these particulars, they are for guidance purposes only. All measurements are approximate and are for general guidance purposes only and whilst every care has been taken to ensure their accuracy, they should not be relied upon and potential buyers are advised to recheck the measurements.

