



Price
£600,000

Freehold

3x  1x  1x 

**Frances Road,
Chingford, E4**

 **DOUGLAS
ALLEN**
Helping you move forwards



Main features

- Stunning 1930s family home
- Spacious lounge
- Charming rear garden
- Off-street parking
- Well-presented throughout with period character
- Prime Francis Road location close to local amenities and transport links

Accommodation

GROUND FLOOR

Lounge: 14'5 x 12'4 (4.40m x 3.76m)

Dining Room: 12'10 x 11'6 (3.91m x 3.51m)

Kitchen: 8'10 x 6'3 (2.69m x 1.91m)

FIRST FLOOR

Bedroom 1: 14'6 x 9'10 (4.42m x 3.00m)

Bedroom 2: 12'8 x 12'0 (3.86m x 3.66m)

Bedroom 3: 7'10 x 7'2 (2.39m x 2.19m)

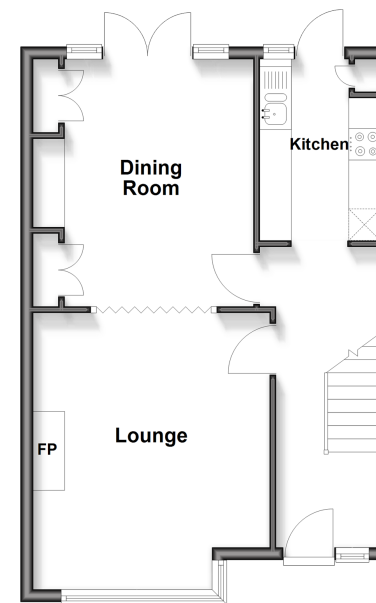
Bathroom

OUTSIDE

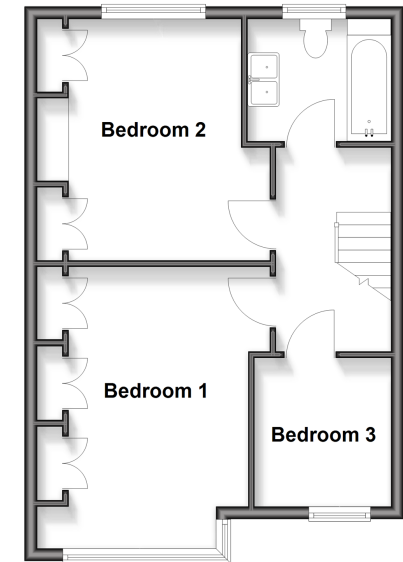
Driveway

Rear Garden

Ground Floor
Approx. 44.5 sq. metres (479.2 sq. feet)



First Floor
Approx. 45.4 sq. metres (488.3 sq. feet)



Call Chingford - 020 8524 6331 ■ douglasallen.co.uk

■ If buying to rent, please check if Local Authority licensing schemes apply before proceeding



51013496/20260516/KS/SC