

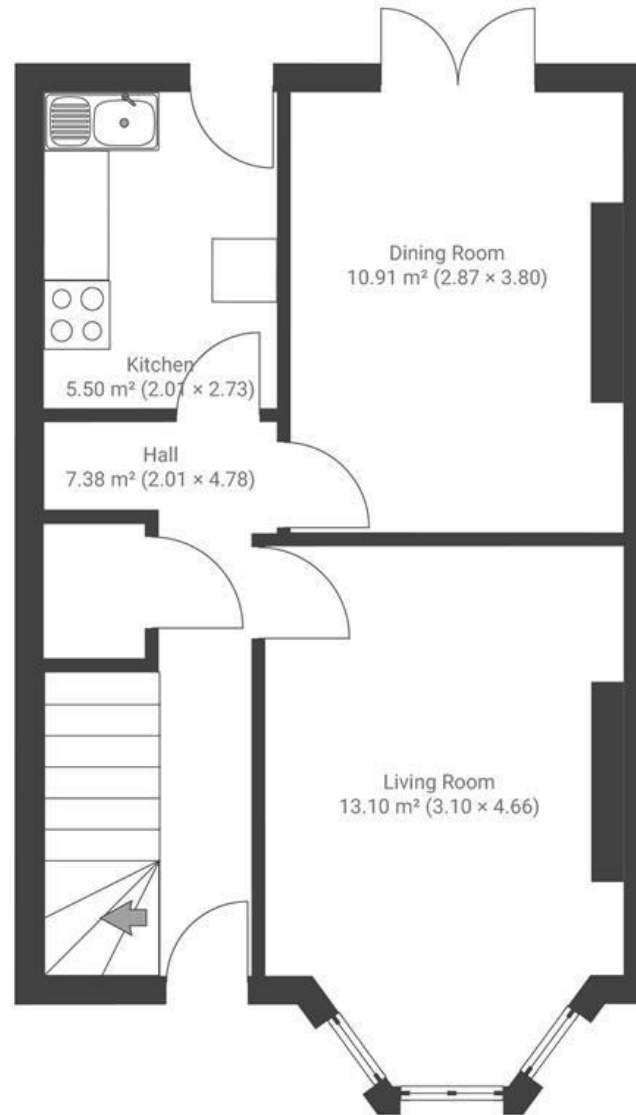
Albert Parade

REDFIELD

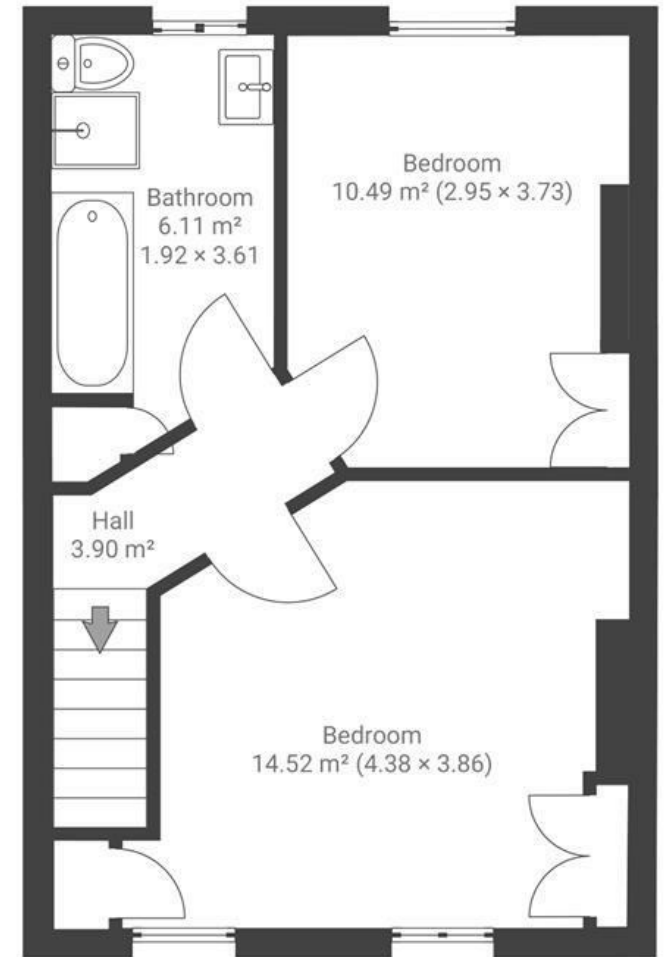
APPROXIMATE FLOOR AREA
78.2 SQM / 841 SQFT



GROUND FLOOR



FIRST FLOOR



Boardwalk

Albert Parade , BRISTOL



£350,000



2 Bedrooms



BS5 9EH



1 Bathrooms

"Sue loved that the house is close to the city centre, and that it's within short walking distance of lots of shops and cafes. She also loved spending time in the garden, planting vegetables and tending to the plants"

