



Flat 22 Ranmoor View, 410 Fulwood Road, Ranmoor, Sheffield, S10 3GG



# 410 Fulwood Road

## Ranmoor

Guide Price

# £160,000

GUIDE PRICE: £160,000 -£170,000

NO CHAIN A well-presented two bedroom second floor apartment, ideally situated in a highly sought-after location just off Fulwood Road in Sheffield. This popular area offers excellent access to local amenities, regular bus routes, nearby universities and major hospitals, making it perfect for professionals, students, or investors alike. Within walking distance to an array of green spaces including Endcliffe Park, Bingham Park and out towards the Mayfield Valley.

The property features two generously sized double bedrooms, a contemporary family bathroom, and a modern fitted kitchen with ample storage and workspace. The spacious living and dining area is bright and inviting, enhanced by a large window that allows for plenty of natural light, creating a comfortable space for both relaxing and entertaining.

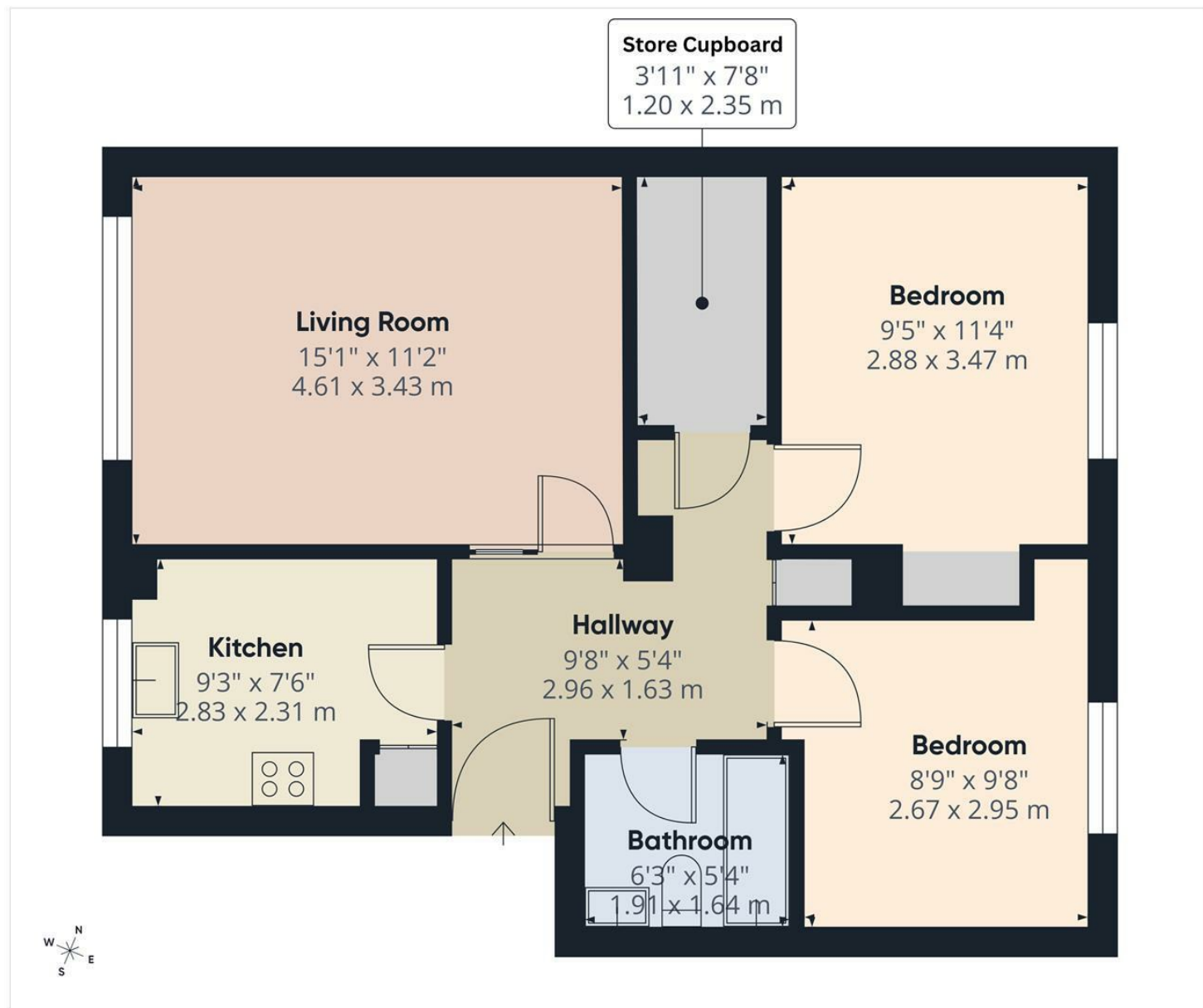
Further benefits include off-street parking and a secure intercom entry system, providing both convenience and peace of mind.

This attractive apartment combines comfort, practicality, and modern living in one of Sheffield's most desirable locations.



- Two double bedrooms
- Popular development ideal for access to universities and hospitals
- Modern kitchen with stylish units
- Bright and spacious open plan living & dining area
- Contemporary bathroom
- Entrance hallway with additional storage
- Off-street parking
- A Secure Entry Intercom System
- Viewings Via Saxton Mee Banner Cross
- No Chain





**Approximate total area<sup>(1)</sup>**  
586 ft<sup>2</sup>  
54.6 m<sup>2</sup>

(1) Excluding balconies and terraces

Calculations reference the RICS IPMS 3C standard. Measurements are approximate and not to scale. This floor plan is intended for illustration only.

GIRAFFE360

While we endeavour to make our sales particulars fair, accurate and reliable, they are only a general guide to the property and, accordingly, if there is any point, which is of particular importance to you, please contact the relevant office. The Agents have not tested any apparatus, equipment, fittings or services and so cannot verify they are in working order. The buyer is advised to obtain verification. Please note all the measurement details are approximate and should not be relied upon as exact. All plans, floor plans and maps are for guidance purposes only and are not to scale. Under no circumstances should they be relied upon as exact or for use in planning carpets and other such fixtures, fittings or furnishings. YOUR HOME IS AT RISK IF YOU DO NOT KEEP UP REPAYMENTS ON A MORTGAGE OR OTHER LOAN SECURED ON IT. 'A Life Assurance policy may be requested.' 'Written Quotations of credit terms available on request.'

Banner Cross  
T: 0114 268 3241  
E: [bannercross@saxtonmee.co.uk](mailto:bannercross@saxtonmee.co.uk)  
[www.saxtonmee.co.uk](http://www.saxtonmee.co.uk)

Hathersage  
T: 01433 650009  
E: [hathersage@saxtonmee.co.uk](mailto:hathersage@saxtonmee.co.uk)

Bakewell  
T: 01629 815307  
E: [bakewell@saxtonmee.co.uk](mailto:bakewell@saxtonmee.co.uk)

Matlock  
T: 01629 828250  
E: [matlock@saxtonmee.co.uk](mailto:matlock@saxtonmee.co.uk)

