



Thornbury Road, TW7

£399,950

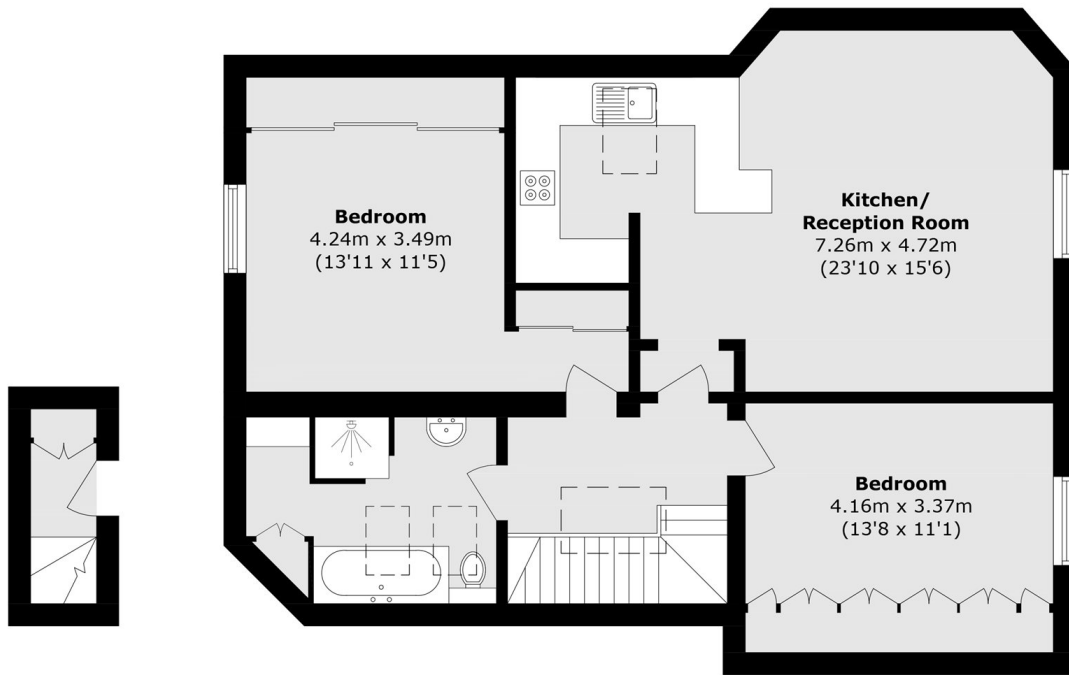
We are delighted to bring to the market this impressive and immaculately presented two double bedroom apartment. Positioned on the second/top floor of this attractive period conversion, this larger than average apartment spans more than 870 sq ft of generous living space. Benefits include two good size bedrooms with in-built wardrobes, a utility space located in a large bathroom with bathtub and shower, allocated parking, air conditioning, communal gardens with outside shed and a long lease.

Thornbury Road is ideally located close to an array of amenities including excellent schools, shops and parks. Both Isleworth mainline and Osterley tube stations are nearby with regular services to London and Heathrow Airport. Neighbouring areas of Richmond, Twickenham and Kew are also within easy reach.

Features

Period Conversion
Top Floor Apartment
Larger Than Average
Two Double Bedrooms
Air Conditioning
Allocated Parking
Immaculate Condition

Thornbury Road, ISLEWORTH, TW7



First Floor

Second Floor

Total area (approx.): 84.5 sq. m (909.6 sq. ft)