



**RE/MAX**  
Prime Estates



## **50 Windsor Crescent, Stourbridge, DY7 6AJ** **Offers in the region of £375,000**

Tucked away in the ever-popular village of Kinver, this well-presented three-bedroom mid-terraced home enjoys a truly unique setting, with the historic Kinver Edge Rock Houses forming a striking backdrop just beyond the rear garden.

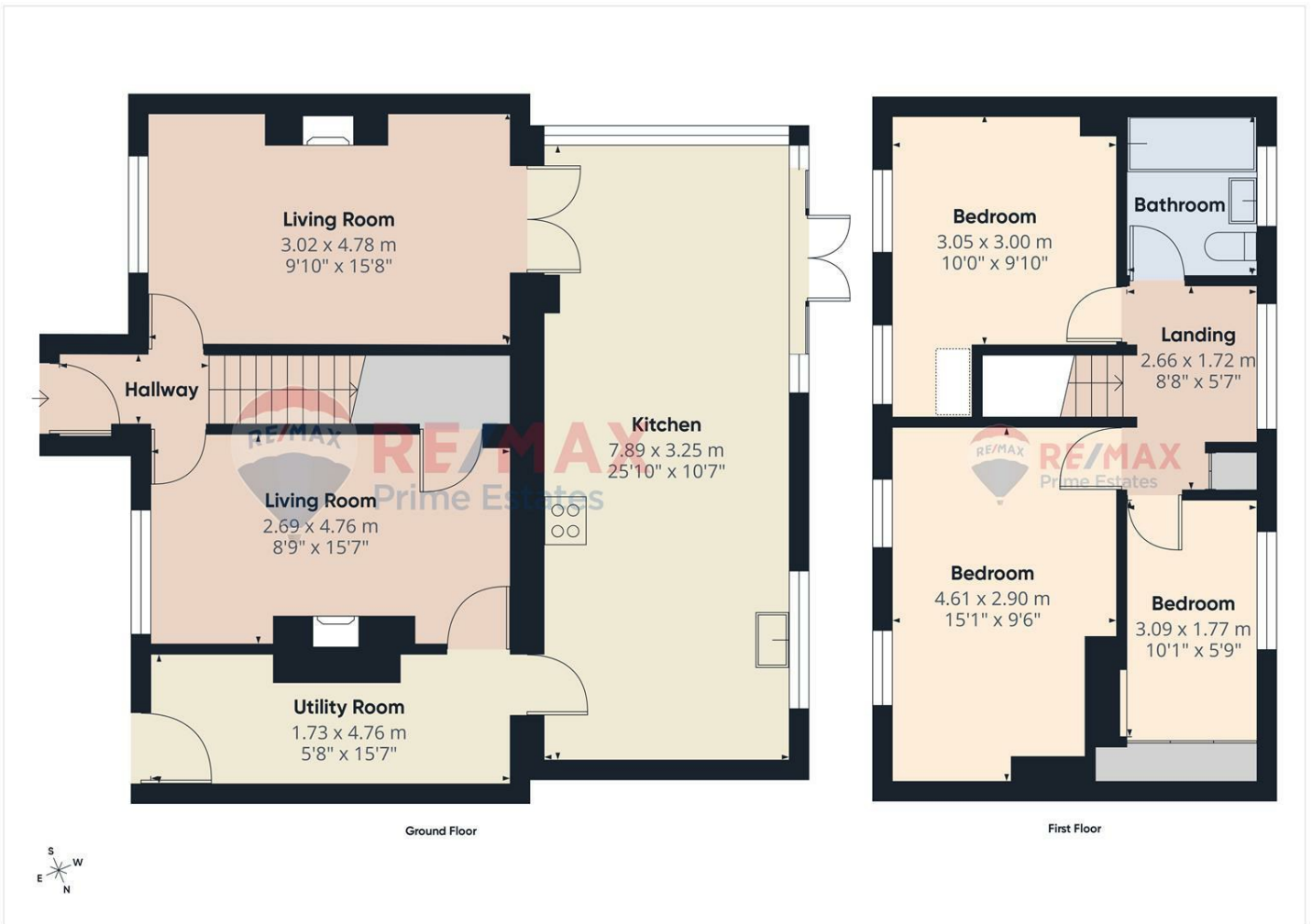
Offering an excellent opportunity for first-time buyers, young families, or those looking to enjoy village life, the property combines comfortable modern living with an enviable location. Internally, the accommodation is well-proportioned throughout, with a welcoming entrance leading into a bright and spacious lounge, ideal for both relaxing and entertaining. To the rear, a well-appointed kitchen/diner provides a practical and sociable space, with direct access out to the garden.

Upstairs, the property continues to impress with three well-sized bedrooms, offering flexibility for growing families, home working, or guest accommodation. A family bathroom completes the first floor.

Externally, the rear garden offers a pleasant space to unwind, with the added benefit of the iconic rock houses creating a truly special outlook rarely found with properties of this type. The front aspect enjoys a quiet residential setting, with nearby access to local amenities, schooling, and countryside walks.



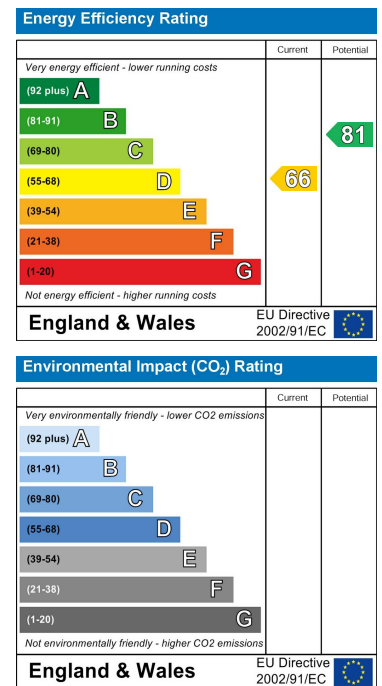
## Floor Plan



## Area Map



## Energy Efficiency Graph



These particulars, whilst believed to be accurate are set out as a general outline only for guidance and do not constitute any part of an offer or contract. Intending purchasers should not rely on them as statements of representation of fact, but must satisfy themselves by inspection or otherwise as to their accuracy. No person in this firm's employment has the authority to make or give any representation or warranty in respect of the property.

Stourbridge, West Midlands, DY8 1DX

Tel: +44 (0) 1384 438457 Email: prime.estates@remax.uk <https://remax.uk/locations/RE-MAX-Prime-Estates>