



## Coleridge Gardens, SW10

£1,395,000

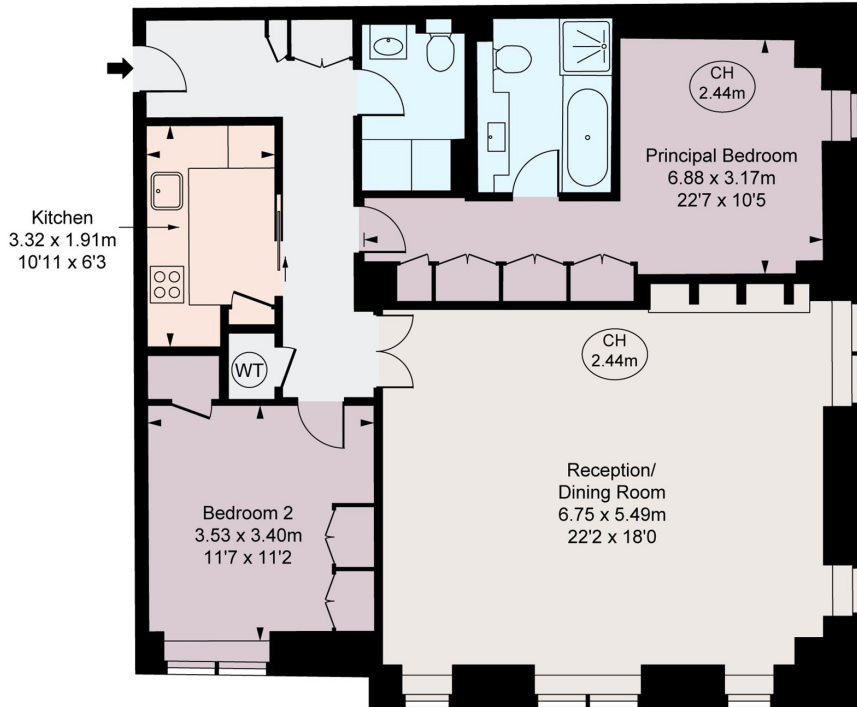
A beautifully designed two bedroom apartment set within a popular, gated development. Positioned on the corner of a handsome building, this property is filled with natural light and benefits from 24 hour porters.

Coleridge Gardens is a private development boasting a gym, communal gardens and a swimming pool, ideally located between the King's Road and Fulham Road with shops, transport links and restaurants close by.

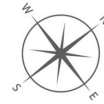
### Features

- Secure Parking Space
- Communal Gardens
- 24 Hour Porter
- Lift
- Two Bedrooms
- Excellent Condition

# Coleridge Gardens, London, SW10



Mathison House,  
Coleridge Gardens, SW10  
Approximate Gross Internal Area  
96.67 sq m / 1,041 sq ft  
( CH = Ceiling Heights )



This plan is not to a given scale. A detailed layout plan to scale for valuation is available on request. All measurements and areas are within 1% tolerance and have been prepared in accordance with industry standards as defined in the RICS Code of Measuring Practice  
© Fulham Performance

# Dexters

Chelsea and Belgravia  
45 Sloane Avenue  
London  
SW3 3DH  
Sales  
020 7590 9510

Energy Rating: . We aim to make our particulars both accurate and reliable. However they are not guaranteed; nor do they form part of an offer or contract. If you require clarification on any points then please contact us, especially if you're traveling some distance to view. Please note that appliances and heating systems have not been tested and therefore no warranties can be given as to their good working order.



dexters.co.uk