



## Indigo Square, KT6

£450,000

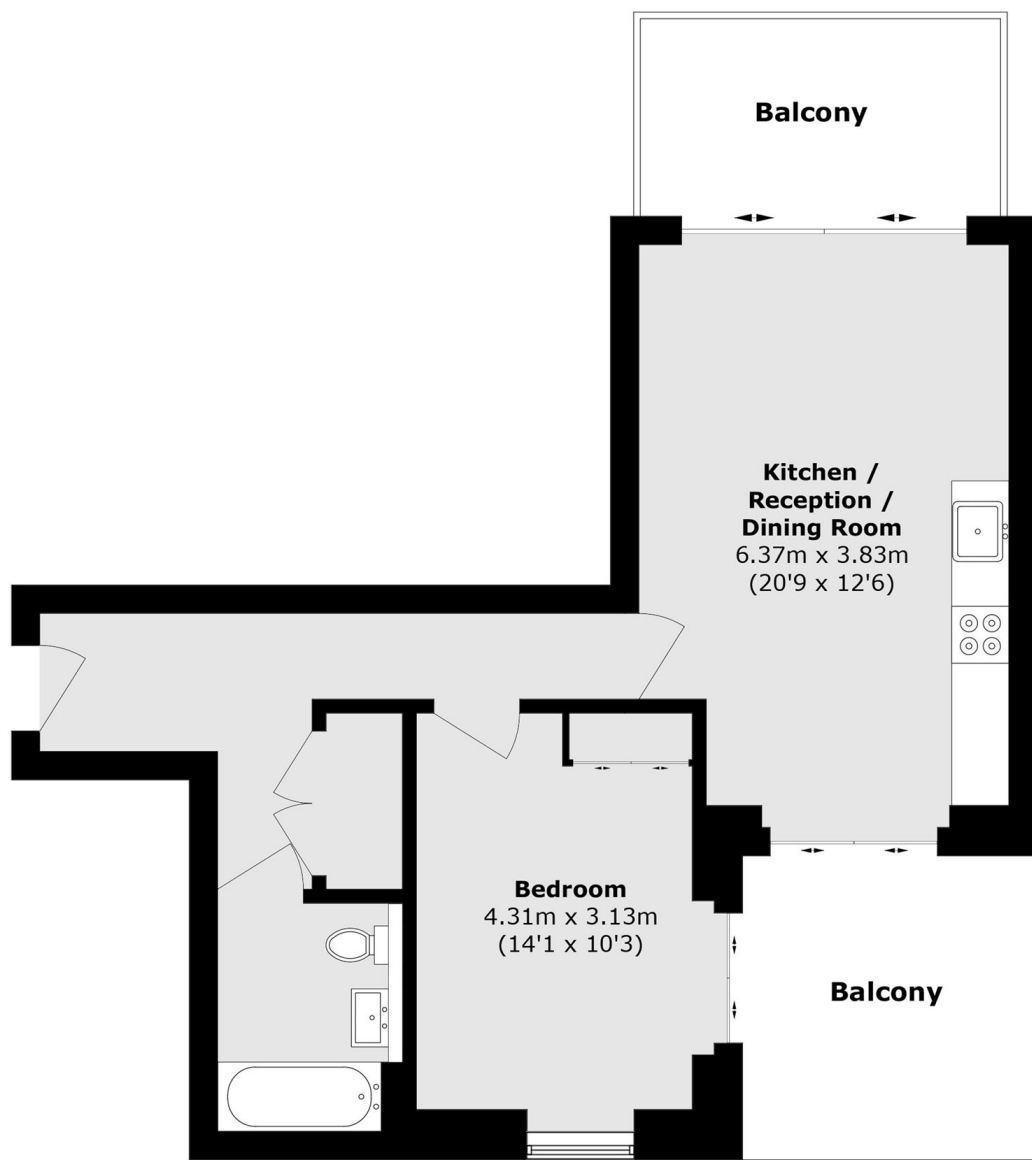
This second floor apartment offers plenty of living space with an open plan kitchen/reception room, a double bedroom, a private balcony and a private covered terrace as well as communal gardens and a parking space.

Indigo Square is in the heart of Surbiton, off Portsmouth Road which runs along the idyllic River Thames and less than half a mile away from Surbiton train station.

### Features

- Second Floor
- Open Plan Kitchen/Lounge
- One Double Bedroom
- Two Private Balconies
- Underground Parking
- Central Location

# Indigo Square, Surbiton, KT6



Total area (approx.): 53.2 sq. m (572.6 sq. ft)  
Balcony area (approx.): 17.8 sq. m (191.6 sq. ft)