

£210,000

St. James Gardens, Mansfield
Woodhouse, Mansfield,



Welcome to **BuckleyBrown**, where every home is carefully presented, so you can explore with clarity and confidence.

BuckleyBrown
ESTATE AGENTS

"This impressive residence has been carefully assessed and presents exceptionally well, offering a superb combination of space, quality, and modern living throughout."

- Tim, Valuer



MOVE IN, UNPACK AND START LIVING

A beautifully presented three-bedroom home offering modern, move-in-ready living.

From the moment you arrive at this attractive three-bedroom end-terrace home, it is clear the property has been thoughtfully decorated and well maintained throughout, offering a modern, move-in-ready finish. The accommodation is both spacious and versatile, providing a well-balanced layout ideally suited to first-time buyers, growing families, or those seeking a low-maintenance home they can simply move straight into and enjoy.



THE FINER DETAILS

A well-presented home offering comfortable and practical living throughout.

The ground floor offers a well-planned layout featuring a fully equipped kitchen, a comfortable living room with French doors opening directly onto the rear garden, and a convenient ground floor WC—creating a practical and inviting space for modern living.

To the first floor, the property boasts three well-proportioned bedrooms, complemented by a three-piece family bathroom, all accessed from a central landing.

Externally, the home benefits from gardens to both the front and rear, along with a driveway and garage providing ample off-road parking and storage. The south-facing rear garden is a particular highlight, featuring a decked seating area ideal for relaxing and entertaining in the sun.





BuckleyBrown
ESTATE AGENTS







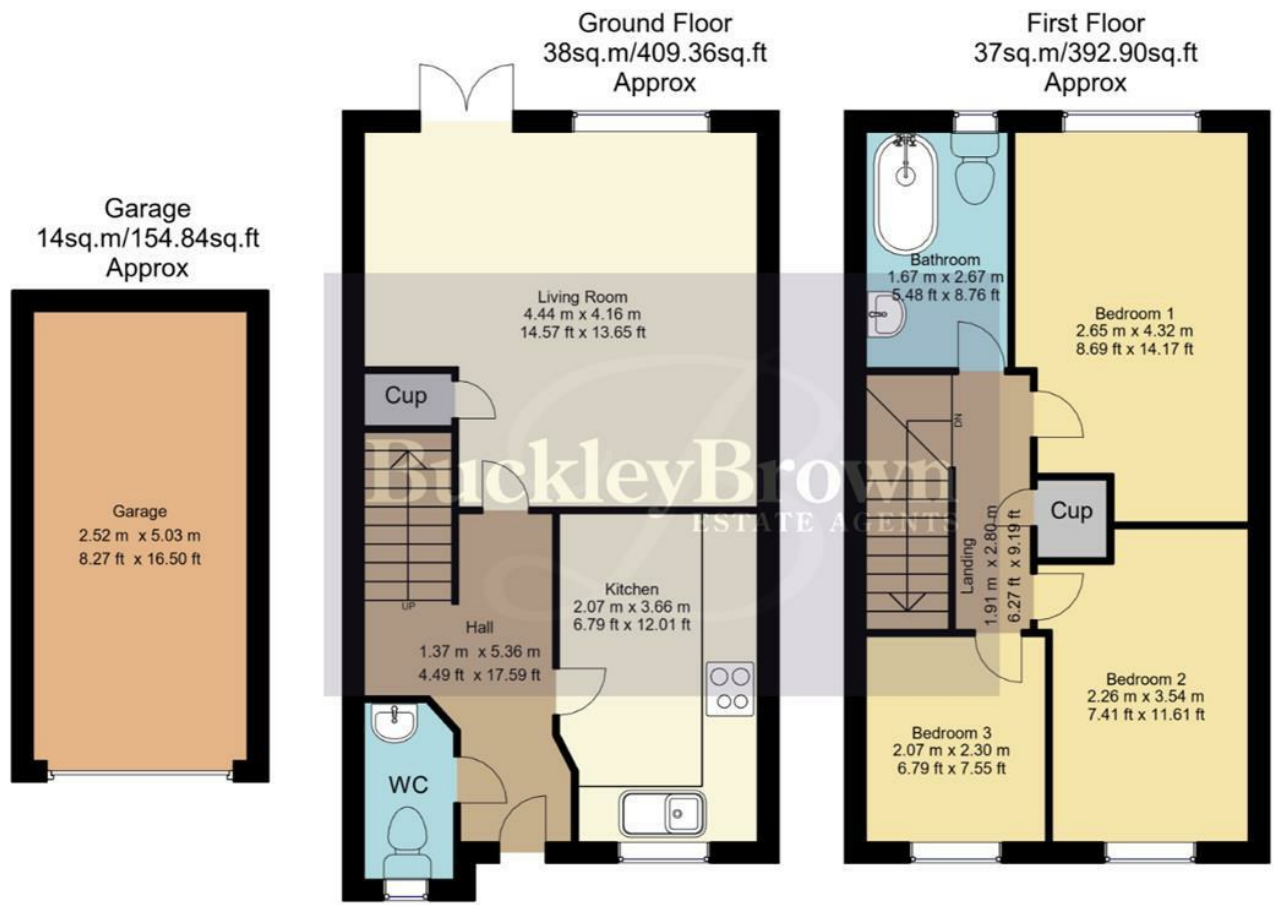
LIFE IN MANSFIELD WOODHOUSE

Mansfield Woodhouse is a popular and well-established suburb located to the north of Mansfield town centre, offering a pleasant residential setting with a strong sense of local character. Combining everyday convenience with access to green spaces, the area appeals to a wide range of buyers seeking a balance between town living and community atmosphere.

The area itself has a proud heritage and a welcoming feel, centred around its historic High Street and traditional market place. Residents benefit from a variety of local amenities, including independent shops, supermarkets, schools and healthcare facilities, along with a selection of cafés, pubs and community services. This well-served environment makes Mansfield Woodhouse particularly attractive to families, first-time buyers and those looking to remain within an established community.

Surrounded by attractive countryside and green spaces, Mansfield Woodhouse is well suited to those who enjoy outdoor living. Nearby parks, woodland areas and open countryside provide opportunities for walking, cycling and recreation, while the wider Sherwood Forest area is easily accessible for longer countryside outings.





Whilst every attempt has been made to ensure the accuracy of the floor plan contained here, no responsibility is taken for incorrect measurements of doors, windows, appliances and room or any error, omission or misstatement. Exterior and interior walls are drawn to scale based on interior measurements. Any figure given is for initial guidance only and should not be relied on as basis of valuation. These plans are for marketing purposes only and should be used as such by any prospective purchase. Specially no guarantee is should not be relied on as a basis of valuation. These plans are for marketing purposes only and should be used as such by any prospective purchase. Specifically no guarantee is given on the total square footage of the property if quoted on this plan.

These particulars are intended as a guide only and do not form part of any offer or contract. All descriptions, measurements, images and plans are provided for illustration purposes and should not be relied upon as statements of fact. Prospective purchasers should satisfy themselves as to the accuracy of the information. Buckley Brown Estate Agents accept no liability for any loss arising from reliance on these details.

© Buckley Brown Estate Agents 2026. All rights reserved.

Exceptional homes deserve
exceptional representation.

Let's Chat.

01623 633633

mansfield@buckleybrown.co.uk

[buckleybrown.co.uk](https://www.buckleybrown.co.uk)

BuckleyBrown
ESTATE AGENTS