



Connells

Windermere Close
Earl Shilton Leicester



Property Description

Situated in a quiet cul-de-sac within a popular residential area of Earl Shilton, is a well-presented three-bedroom semi-detached home offering well-proportioned accommodation, a private rear garden and a garage.

The property is entered via a welcoming hallway, providing access to the main living areas. The lounge is bright and comfortable, with views over the rear garden and ample space for seating. It flows seamlessly into an open-plan dining area, creating a sociable and versatile space ideal for both everyday living and entertaining.

The kitchen is fitted with a range of wall and base units and is complemented by a useful separate utility room.

To the first floor, the property offers three well-sized bedrooms, including a generous principal bedroom and two further versatile rooms suitable for children, guests or home working. The accommodation is completed by a modern shower room.

Externally, the property benefits from a private, enclosed rear garden, offering a pleasant outdoor space for relaxing or entertaining. To the front, there is off-road parking leading to the garage.

Windermere Close is conveniently located for local amenities, schools and transport links, making this an excellent choice for families, first-time buyers or those looking to downsize.



Ground Floor

The property is entered via a welcoming entrance hall which provides access to the main living accommodation. To the rear of the property is a spacious and light-filled lounge, enjoying views over the garden and offering ample space for comfortable seating. This flows seamlessly into an open-plan dining area, ideal for family dining and entertaining, with double doors opening onto the rear garden.

The kitchen is fitted with a range of wall and base units and offers practical workspace, with a window overlooking the front elevation. Additionally there is a useful utility room, providing additional storage and appliance space.

First Floor

The first floor landing gives access to three well-proportioned bedrooms.

The principal bedroom is a generous double, positioned to the rear of the property, while bedroom two is also a good-sized double. Bedroom three offers flexibility.

The accommodation is completed by a modern shower room, fitted with a walk-in shower, wash hand basin and WC.

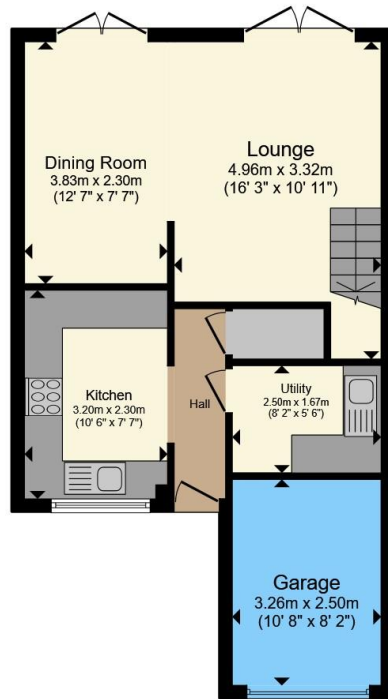
Outside

To the front of the property there is off-road parking leading to the garage, providing secure parking or additional storage. To the rear is a private, enclosed garden, mainly laid to patio and lawn, offering an excellent outdoor space for relaxing, entertaining or family use.

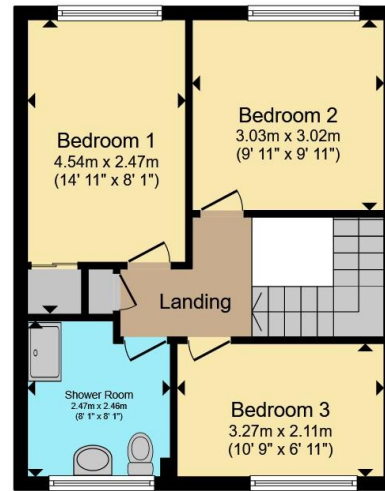








Ground Floor



First Floor

Total floor area 88.3 m² (951 sq.ft.) approx

This floor plan is for illustrative purposes only. It is not drawn to scale. Any measurements, floor areas (including any total floor area), openings and orientation are approximate. No details are guaranteed, they cannot be relied upon for any purpose and they do not form part of any agreement. No liability is taken for any error, omission or misstatement. A party must rely upon its own inspection(s). Powered by www.propertybox.io



To view this property please contact Connells on

T 01455 230523
E hinckley@connells.co.uk

88 Castle Street
 HINCKLEY LE10 1DD

EPC Rating: C Council Tax Band: B

Tenure: Freehold

view this property online connells.co.uk/Property/HIN313941



1. MONEY LAUNDERING REGULATIONS Intending purchasers will be asked to produce identification documentation at a later stage and we would ask for your co-operation in order that there will be no delay in agreeing the sale. 2. These particulars do not constitute part or all of an offer or contract. 3. The measurements indicated are supplied for guidance only and as such must be considered incorrect. Potential buyers are advised to recheck measurements before committing to any expense. 4. We have not tested any apparatus, equipment, fixtures, fittings or services and it is in the buyers interest to check the working condition of any appliances.

Connells Residential is registered in England and Wales under company number 1489613, Registered Office is Cumbria House, 16-20 Hockliffe Street, Leighton Buzzard, Bedfordshire, LU7 1GN. VAT Registration Number is 500 2481 05.

See all our properties at www.connells.co.uk | www.rightmove.co.uk | www.zoopla.co.uk

Property Ref: HIN313941 - 0004