



Loose Road, Maidstone, Kent, ME15 7UA

Price £400,000



**** A WELL-PRESENTED THREE BEDROOM SEMI-DETACHED FAMILY HOME WITH OFF-ROAD PARKING AND LARGE REAR GARDEN, SITUATED IN A POPULAR RESIDENTIAL LOCATION WITHIN CLOSE PROXIMITY OF MAIDSTONE TOWN CENTRE ****

Page & Wells are delighted to bring to market this most spacious three bedroom family home which has so much to offer. The ground floor accommodation features an entrance hall, dining room, living room opening on to rear garden, kitchen and useful WC. Whilst, on the first floor, there are three bedrooms, bathroom and separate WC. There are off-road parking facilities to the front and a large non-overlooked rear garden. The property is well-placed for all local amenities. An internal viewing is highly recommended. Contact PAGE & WELLS King Street Office on 01622 756703. Tenure: Freehold. EPC Rating: C. Council Tax Band: D.



KEY FEATURES

- Three bedrooms
- Downstairs WC
- Large non-overlooked rear garden
- Off-road parking
- Close to amenities

ACCOMMODATION

Ground Floor:

Entrance Hall

Downstairs WC

Dining Room

Living Room

Kitchen

First Floor:

Bedroom One

Bedroom Two

Bedroom Three

Bathroom

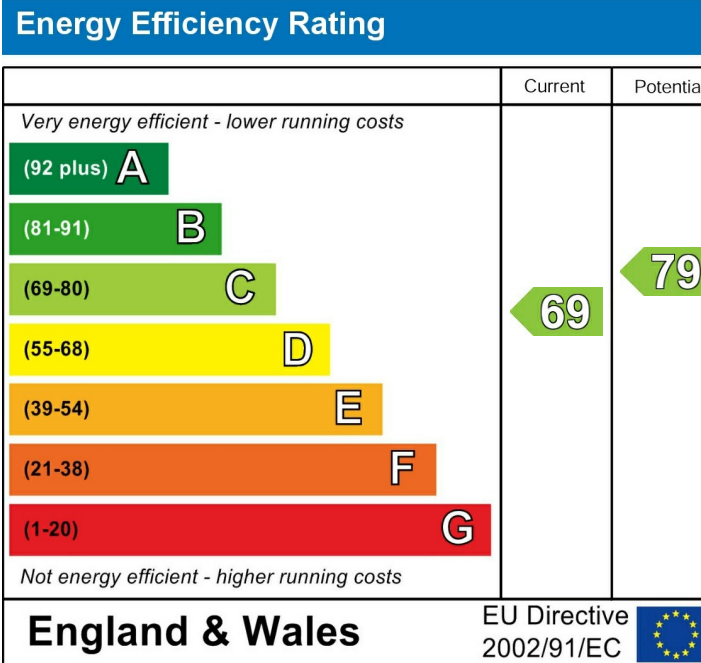
Separate WC

EXTERNALLY

There is a shared driveway which provides access to off-road parking facilities. There is a large non-overlooked garden to the rear.

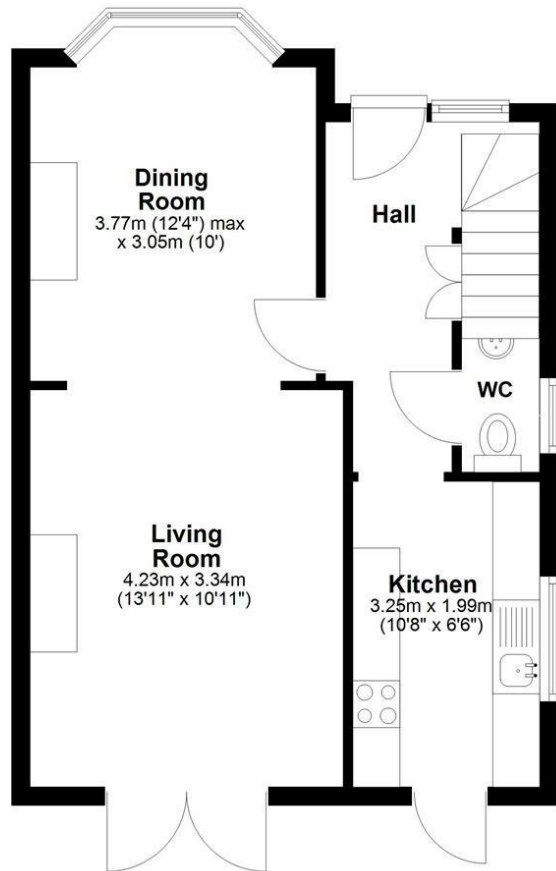
VIEWING

Viewing strictly by arrangements with the Agent's Head Office: 52-54 King Street, Maidstone, Kent ME14 1DB. Tel: 01622 756703.

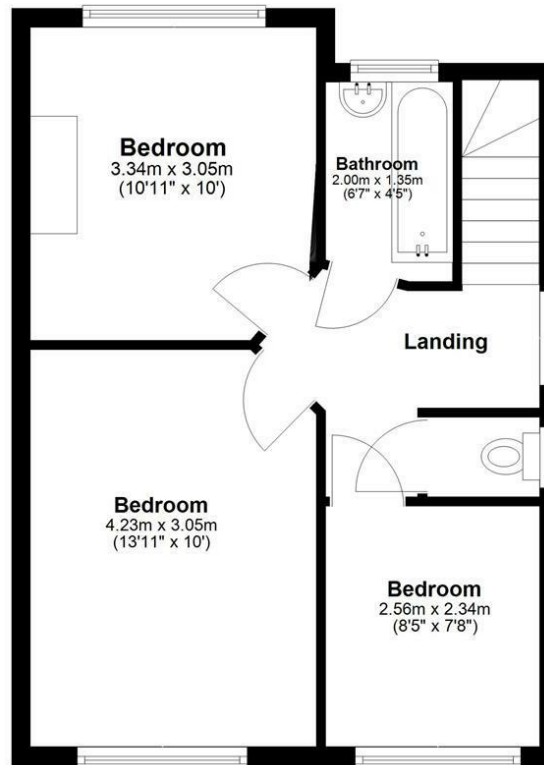


Page & Wells limited for themselves and for the vendors of this property whose agents they are give notice that: 1. These particulars do not constitute any part of, an offer or a contract. 2. All statements contained in these particulars as to this property are made without responsibility on the part of Page & Wells Limited or the Vendor. 3. None of the statements contained in these particulars as to the property is to be relied on as statements or representations of fact. 4. Any intending purchaser must satisfy himself by inspection or otherwise as to the correctness of each of the statements contained in these particulars. 5. The vendor does not make or give, and neither Page & Wells Limited nor any person in their employment has any authority to make or give any representation whatsoever in relation to this property. These particulars are supplied on the understanding that all negotiations are carried out throughout Page & Wells Limited. Properties with a reference prefixes EAA are those which Page & Wells Limited disclose an interest in accordance with the provisions of the Estates Agents Act 1979

Ground Floor



First Floor



Total area: approx. 80.8 sq. metres (869.6 sq. feet)

