



Ian Anthony

The Estate Agents

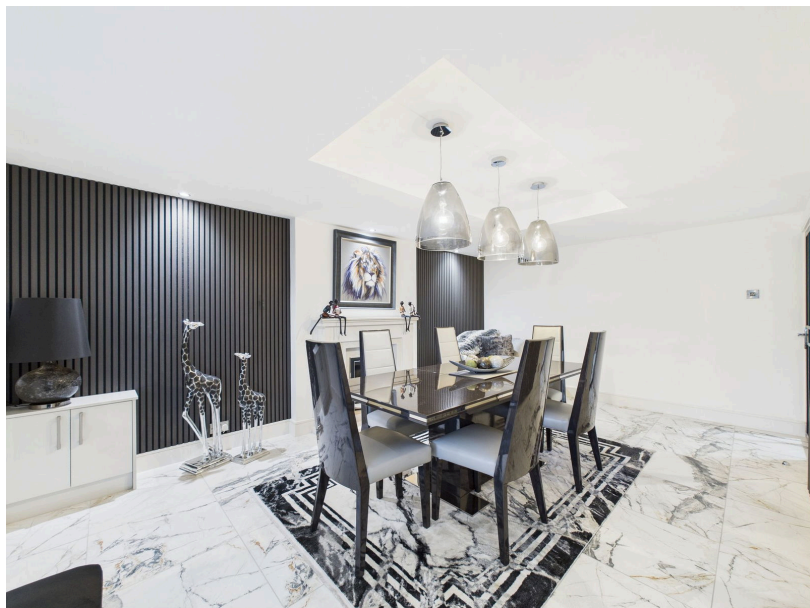
Brookfield Lane, Aughton, Lancashire, L39 6SP

Offers In Region Of £480,000

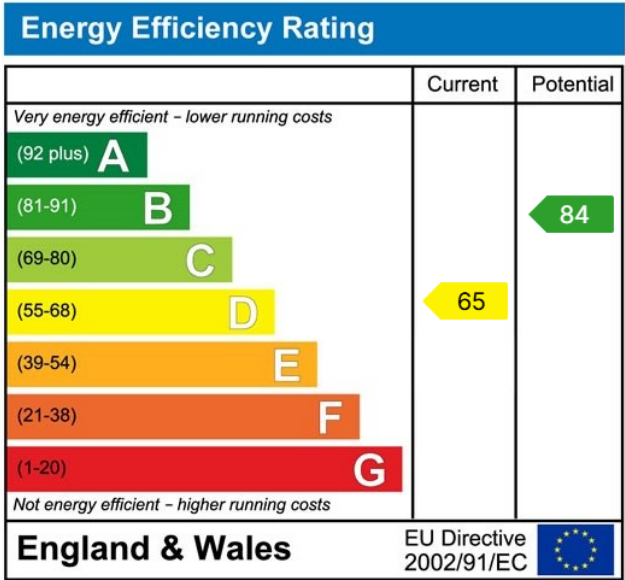
🛏️ 3 🚗 2 🛋️ 2



- WELL-PRESENTED TWO/THREE-BEDROOM DETACHED HOME
- READY TO MOVE INTO
- STYLISH MARBLE TILED HALLWAY
- CONTEMPORARY LIVING ROOM WITH BIFOLD DOORS
- MODERN FAMILY BATHROOM
- SOUGHT-AFTER AUGHTON LOCATION
- GENEROUS MULTI-CAR DRIVEWAY
- IMPRESSIVE OPEN-PLAN KITCHEN/DINING SPACE
- TWO SPACIOUS DOUBLE BEDROOMS
- LARGE REAR GARDEN WITH PATIO AND LAWN



This well-presented two/three-bedroom dormer bungalow is situated on the ever-popular Brookfield Lane in the sought-after village of Aughton, offering an excellent opportunity for buyers seeking a property that is truly ready to move into, with the added benefit of a large rear garden that is a true highlight of the home.



These particulars, whilst believed to be accurate are set out as a general outline only for guidance and do not constitute any part of an offer or contract. Intending purchasers should not rely on them as statements of representation of fact, but must satisfy themselves by inspection or otherwise as to their accuracy. No person in this firm's employment has the authority to make or give any representation or warranty in respect of the property.