



Notting Hill Gate, W11

£3,200 Per calendar month

An impressive two double bedroom duplex apartment located on the 17th floor of a well maintained portered building.

The apartment has the living space on the floor as you enter, with access to a private balcony and a separate kitchen. The bedroom are upstairs alongside the family bathroom. The block is perfectly situated just 0.1 miles from Notting Hill Gate Tube Station.

Campden Hill Towers is ideally positioned on the popular Notting Hill Gate benefitting from an array of local amenities on the doorstep.

Features

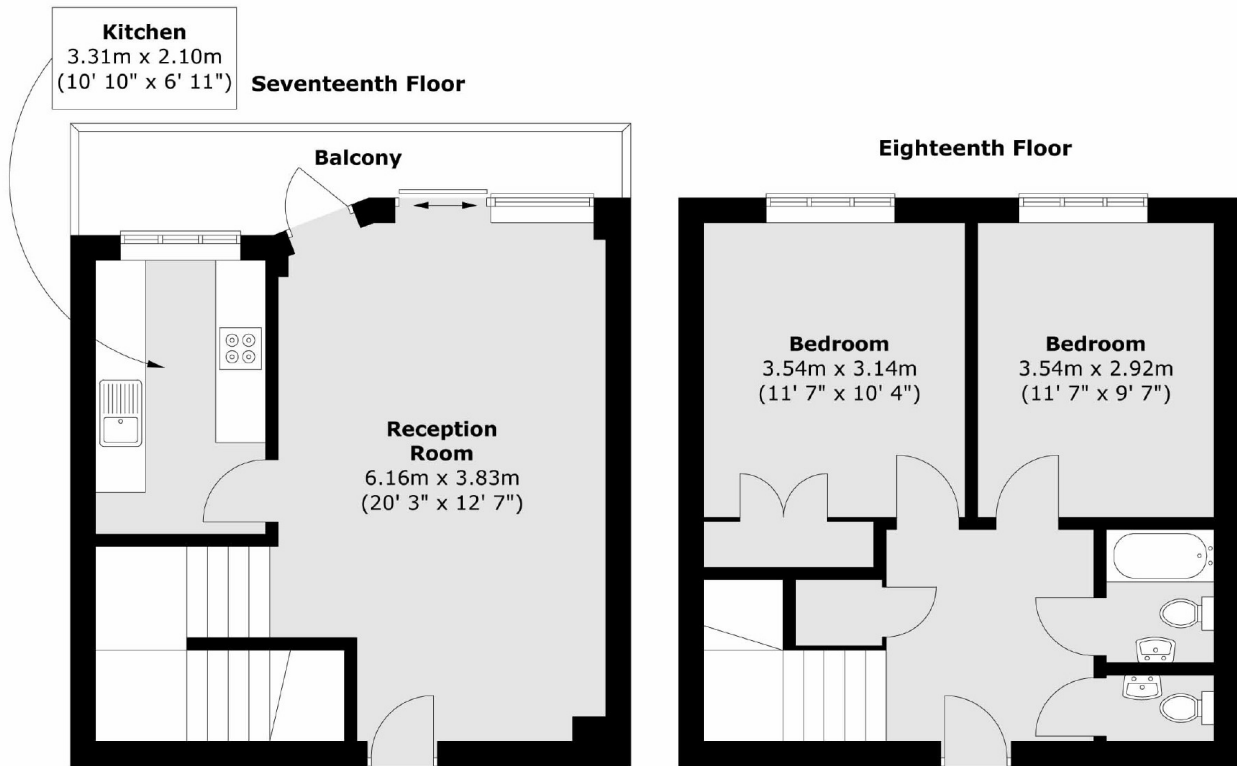
- Two Double Bedrooms
- Split-Level Apartment
- Seventeenth Floor
- Portered Building
- Private Balcony
- Notting Hill Gate



Notting Hill Gate, W11



Notting Hill Gate, London, W11



Total area (approx.) : 76.2 sq. m (820 sq. ft)
Total balcony area (approx.) : 6.5 sq. m (70 sq. ft)