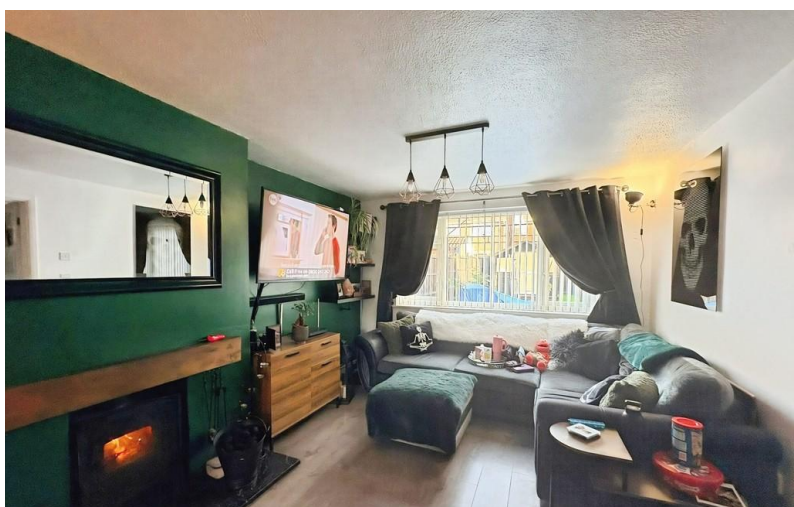


**ON HOLD**



**Billingham Close, Saintbridge**

**3 Bedrooms, 1 Bathroom, Semi-Detached House**

**£250,000**

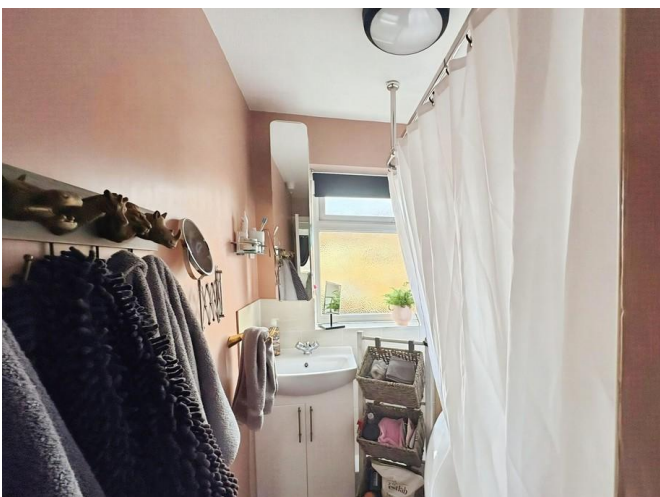
**MARTIN&CO**



Available For Sale this 3 bed semi detached house in situated in a quiet cul de sac in the popular location of Saintbridge. In brief the property comprises of porch through to lounge/dining room with wood burner, separate kitchen with side access to the rear garden and garage. Upstairs comprises of the family bathroom, 3 bedrooms, 2 of these being double in size, garden. the front aspect benefits from a garage and off road parking. Chain free

- 3 Bedroom Semi Detached Home
- Private Rear Garden
- Off Road Parking
- Garage
- Log Burner
- Quiet Cul De Sac Location
- Chain Free

Energy Efficiency Rating		
	Current	Potential
Very energy efficient - lower running costs		
(92+) <b>A</b>		
(81-91) <b>B</b>		86
(69-80) <b>C</b>		
(55-68) <b>D</b>		
(39-54) <b>E</b>	49	
(21-38) <b>F</b>		



---

## Martin & Co Gloucester

13-15 Worcester Street • • Gloucester • GL1 3AJ  
T: 01452 528333 • E: gloucester@martinco.com

# 01452 528333

<http://www.martinco.com>



**Accuracy:** References to the Tenure of a Property are based on information supplied by the Seller. The Agent has not had sight of the title documents. A Buyer is advised to obtain verification from their Solicitor. Items shown in photographs including but not limited to carpets, fixtures and fittings are not included unless specifically mentioned within the sales particulars. They may however be available by separate negotiation. Buyers must check the availability of any property and make an appointment to view before embarking on any journey to see a property. No person in the employment of the agent has any authority to make any representation about the property, and accordingly any information given is entirely without responsibility on the part of the agents, sellers(s) or lessors(s). Any property particulars are not an offer or contract, nor for m part of one. **Sonic / laser Tape:** Measurements taken using a sonic / laser tape measure may be subject to a small margin of error. **All Measurements:** All Measurements are Approximate. **Services Not tested:** The Agent has not tested any apparatus, equipment, fixtures and fittings or services and so cannot verify that they are in working order or fit for the purpose. A Buyer is advised to obtain verification from their Solicitor or Surveyor.