



79 Elder Court, Mead Lane, Hertford

SG13 7FZ

Guide Price £300,000



stevenoates.com



79 Elder Court Mead Lane, Hertford, SG13 7FZ

****CHAIN FREE**** Beautifully appointed 2 double bedroom first floor apartment benefiting from a GOOD SIZE SIT OUT BALCONY, large open plan living space located conveniently for Hertford town centre, Hertford East train station and Hartham Common. Externally there is underground parking and useable communal gardens leading onto the River Lea.

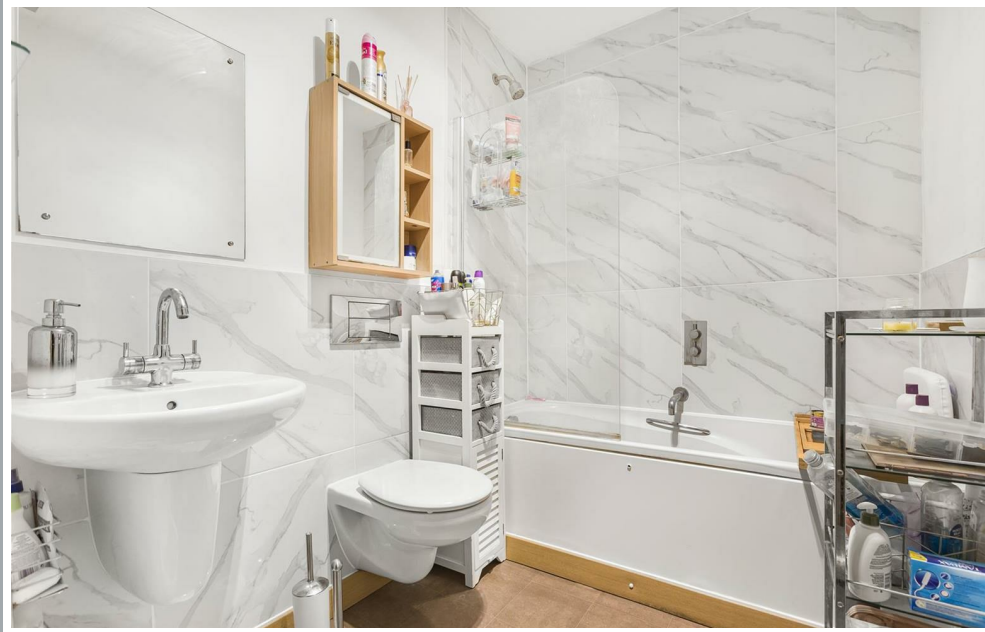
Located with this highly regarded modern development the property is only a 'stone's throw' from the River Lea and Hartham Common beyond. Hertford town centre which offers an excellent choice of bars, restaurants and coffee shops is less than 0.5 miles away, along with Hertford East train station with fast and regular services to London's Liverpool Street.



70 Fore Street, Hertford, Hertfordshire, SG14 1BY



70 Fore Street, Hertford, Hertfordshire, SG14 1BY



70 Fore Street, Hertford, Hertfordshire, SG14 1BY



70 Fore Street, Hertford, Hertfordshire, SG14 1BY

Approximate Gross Internal Area 711 sq ft – 66 sq m



First Floor

These particulars, whilst believed to be accurate are set out as a general outline only for guidance and do not constitute any part of an offer or contract. Intending purchasers should not rely on them as statements of representation of fact, but must satisfy themselves by inspection or otherwise as to their accuracy. No person in this firm's employment has the authority to make or give any representation or warranty in respect of the property.



stevenoates.com