



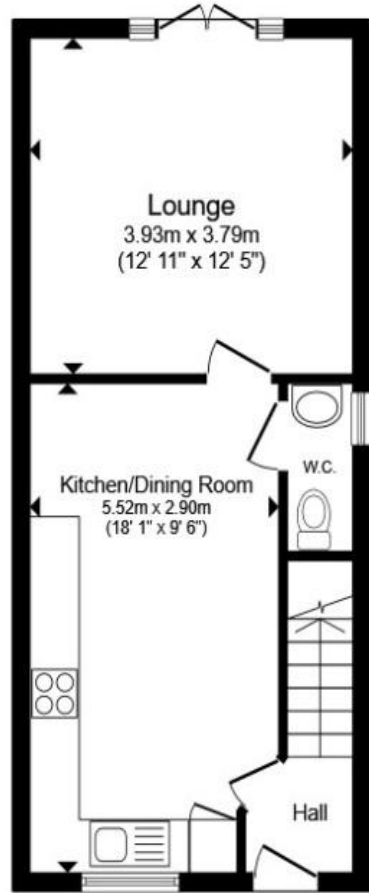
Falcon Close, Mexborough S64 0NU

welcome to

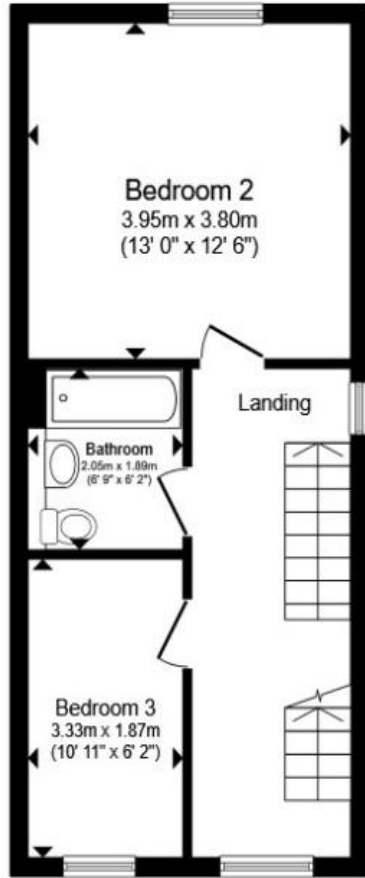
Falcon Close, Mexborough

NEST INTO YOUR NEW HOME! £190,000-£200,000 -This beautifully presented semi-det offers modern living within the sought-after Pastures estate. Featuring a stylish contemporary kitchen, d/stairs W.C, en-suite, off-street parking for 2 & a delightful gardens, it makes an ideal family home. CALL NOW!

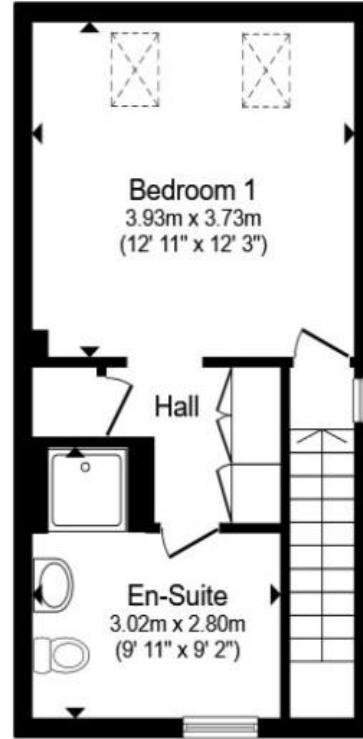




Ground Floor



First Floor



Second Floor

Total floor area 104.9 m² (1,129 sq.ft.) approx

This floor plan is for illustrative purposes only. It is not drawn to scale. Any measurements, floor areas (including any total floor area), openings and orientation are approximate. No details are guaranteed, they cannot be relied upon for any purpose and they do not form part of any agreement. No liability is taken for any error, omission or misstatement. A party must rely upon its own inspection(s). Powered by www.propertybox.io



- Ground Floor:**
- Entrance Hallway**
- Downstairs W.C**
- Lounge**
- Kitchen/Dining Room**
- 1st Floor:**
- Landing**
- Bedroom Two**
- Bedroom Three**
- Bathroom**
- 2nd Floor:**
- Landing**
- Bedroom One**
- En-Suite**
- Exterior:**
- Agent Note's:**

welcome to

Falcon Close, Mexborough

- Modern style 3 bedroom, 3 storey, semi detached. Council Tax C. EPC C
- Sought after location of 'The Pastures' - excellently placed for amenities, schools, shops, transport links & scenic country walks
- Beautifully presented throughout
- Downstairs W.C, en-suite & family bathroom
- Contemporary kitchen with appliances

Tenure: Freehold EPC Rating: C

Council Tax Band: C

guide price

£190,000 - £200,000



Please note the marker reflects the postcode not the actual property

view this property online williamhbrown.co.uk/Property/MXB120070



Property Ref:
MXB120070 - 0004

1. MONEY LAUNDERING REGULATIONS Intending purchasers will be asked to produce identification documentation at a later stage and we would ask for your co-operation in order that there is no delay in agreeing the sale. 2. These particulars do not constitute part or all of an offer or contract. 3. The measurements indicated are supplied for guidance only and as such must be considered incorrect. Potential buyers are advised to recheck measurements before committing to any expense. 4. We have not tested any apparatus, equipment, fixtures or services and it is in the buyers interest to check the working condition of any appliances. 5. Where an EPC, or a Home Report (Scotland only) is held for this property, it is available for inspection at the branch by appointment. If you require a printed version of a Home Report, you will need to pay a reasonable production charge reflecting printing and other costs. 6. We are not able to offer an opinion either written or verbal on the content of these reports and this must be obtained from your legal representative. 7. Whilst we take care in preparing these reports, a buyer should ensure that his/her legal representative confirms as soon as possible all matters relating to title including the extent and boundaries of the property and other important matters before exchange of contracts.



william h brown



01709 583267



mexborough@williamhbrown.co.uk



4 Main Street, MEXBOROUGH, South Yorkshire,
S64 9DW



williamhbrown.co.uk