



**Coopers**

**Coopers**

Woodway Lane, Walsgrave, Coventry CV2 2AG

Price: £424,500





## Woodway Lane

Walsgrave, Coventry

Handsome three bedroom detached double fronted victorian cottage, beautifully presented throughout and set in lovely gardens with large drive and double garage. Extended at rear - must be viewed!

Council Tax band: C

Tenure: Freehold

EPC Energy Efficiency Rating: D

- Handsome Victorian cottage extended at rear
- Two reception rooms and WC
- Extended breakfast kitchen/family room
- Three bedrooms and shower room
- Lovely gardens and double garages
- Beautifully presented throughout - must be viewed!







**Coopers**



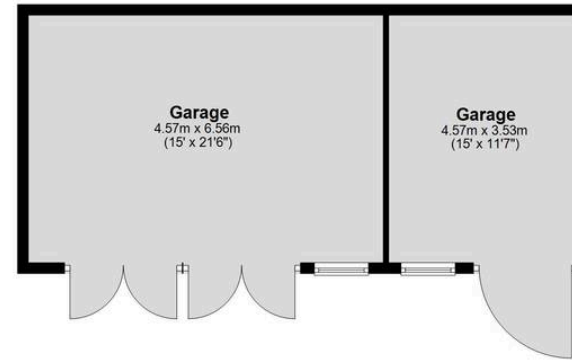
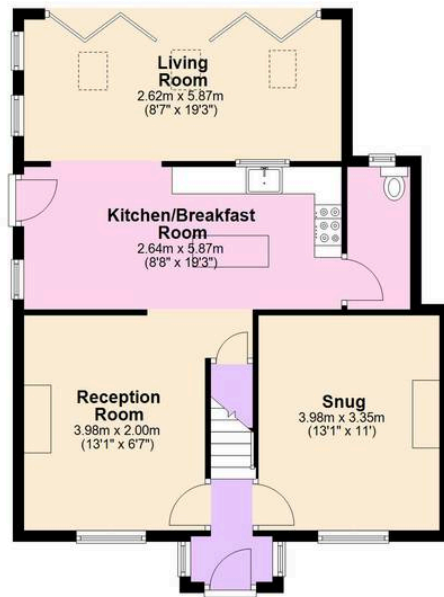
**Coopers**



**Coopers**

### Ground Floor

Approx. 115.0 sq. metres (1237.6 sq. feet)



### First Floor

Approx. 41.5 sq. metres (446.3 sq. feet)



\*Floor plan measurements are approximate and are for illustrative purposes only. While every effort is made to ensure accuracy, no responsibility is taken for any error, omission, or misstatement. Do not scale from this plan.  
Plan produced using PlanUp. □□

Coopers Estate Agents

Coopers, 22 New Union Street – CV1 2HN

**Coopers**

Coopers Chartered Surveyors Ltd, 22 New Union Street, Coventry, West Midlands

CV1 2HN, 024 7655 2841, sales@coopers-cov.com. Company Registration

Number: 6725089 / VAT number: 940 3555 34

024 7655 2841 • sales@coopersstateagents.com • www.coopersstateagents.com/