

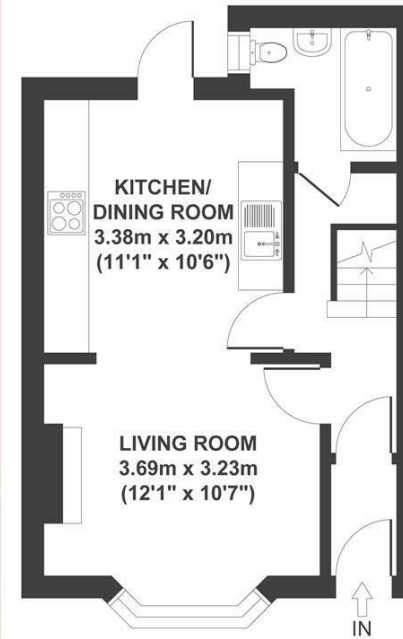
Boardwalk

St. Lukes

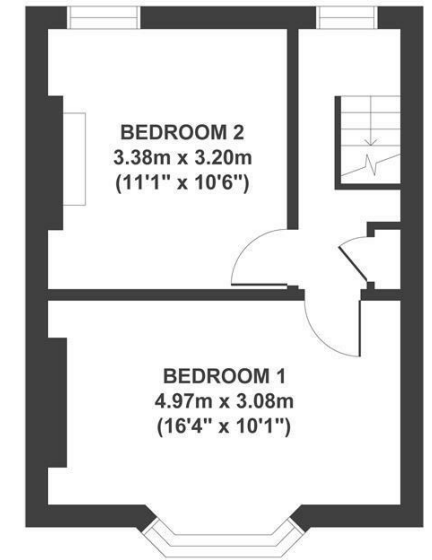
, BRISTOL

St. Lukes Crescent TOTTERDOWN

APPROXIMATE FLOOR AREA
61 SQM / 661 SQFT



GROUND FLOOR



FIRST FLOOR



Boardwalk

St. Lukes

, BRISTOL



£365,000



BS3 4SD



2 Bedrooms



1 Bathrooms



"Victoria Park will always be the first thing I recall of my time here. Having a dog, it's been such a big help and was one of the reasons I chose to move here in the first place. It is an incredible green space, and I've loved having it on my front door step. Aside from the massive space and views over the city and suspension bridge, it also has a great community alongside the friends I have made on the street. I'll always have fond memories and be proud to be able to call this my first home."

