



Hyde Park Gardens, W2

£950,000

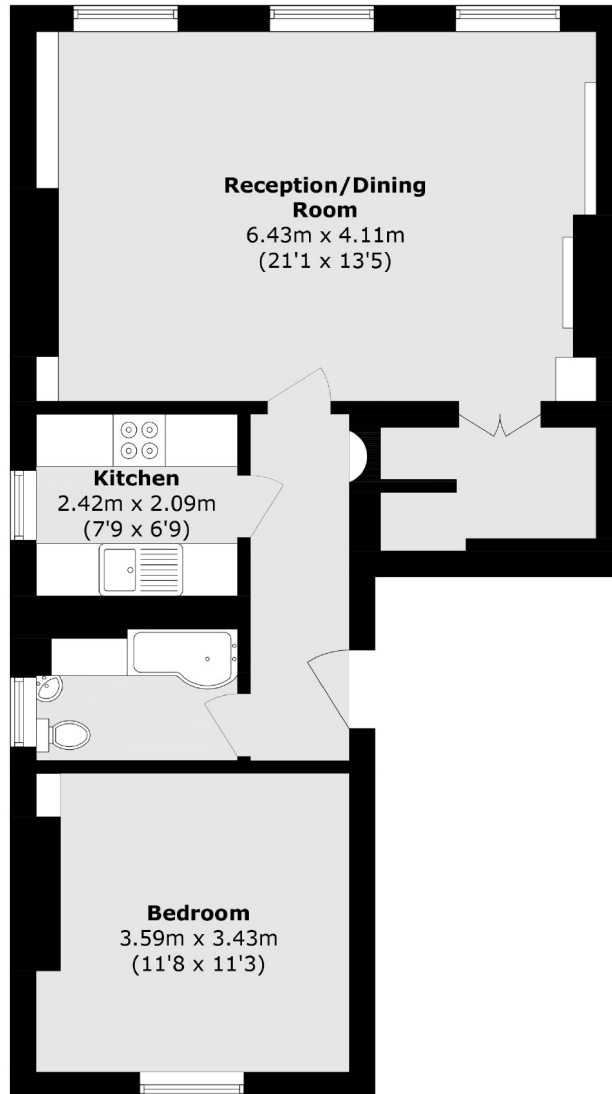
A well proportioned one bedroom apartment measuring circa 60 sq.m sits proudly within a grand Grade II-listed stucco-front townhouse on Hyde Park Gardens, one of London's most sought-after streets. The apartment has high ceilings and period features throughout, overlooking private communal gardens and Hyde Park beyond.

Located in the heart of the Hyde Park Estate, you benefit from the transport links at Lancaster Gate, Paddington and Marble Arch, providing access to Oxford Street, Westbourne Grove and Notting Hill Gate.

Features

- One Double Bedroom
- Gated Development
- Private Communal Gardens
- Lift
- Porter
- Hyde Park
- Digitally Dressed

Hyde Park Gardens, London, W2



Total area (approx.): 61.5 sq. m (661.9 sq. ft)