

Cendal Crescent, E1

£2,500 Per calendar month

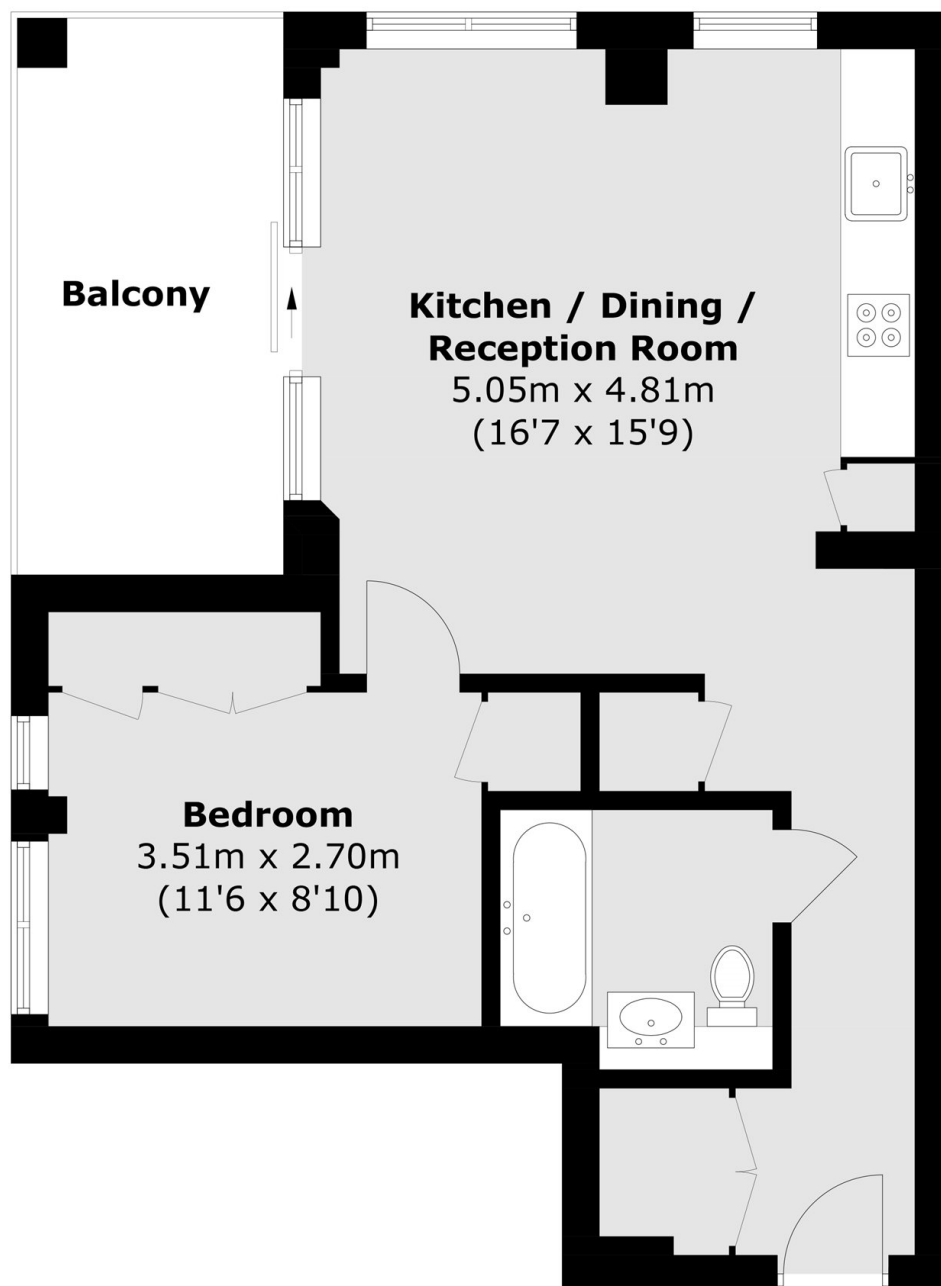
A one double bedroom flat on the 20th floor of Bouchon Point. This modern apartment benefits has an open plan living and kitchen area and a private balcony with amazing views of the City and Canary Wharf. In addition to this, the property comes with a 24 hour concierge, residents gym and private cinema.

Bouchon Point is located in the heart of Whitechapel, moments away from a wide range of shops, bars, café's and restaurants near Aldgate East and Brick Lane.

Features

- One Double Bedroom
- Private Balcony
- Amazing Views
- Concierge
- Gym
- Cinema

Cendal Crescent, London, E1



Total area (approx.): 50.2 sq. m (540.3 sq. ft)
Balcony : 9.7 sq. m (104.4 sq. ft)