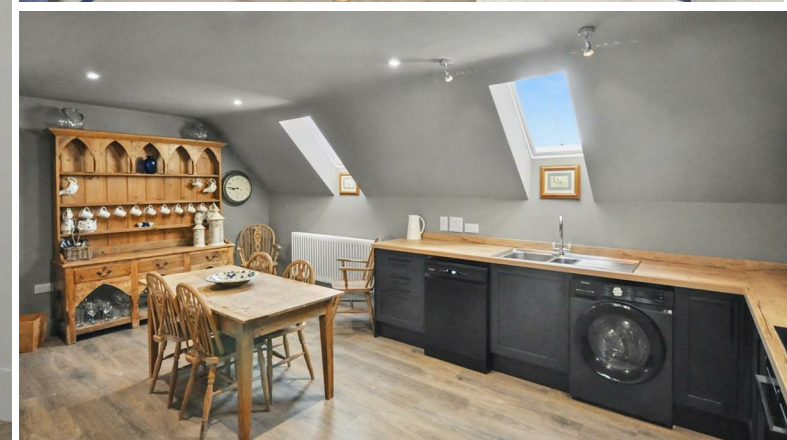




The Flat above the Garage, The Bank, Lighthorne

**£1,350 Per
Calendar Month**



A beautifully presented, one bedroom
Apartment situated in the quaint Village of
Lighthorne. Offered Furnished & Available
NOW

Living Room/Kitchen

19'7" x 21'6" (5.97 x 6.57)

Bedroom

12'7" x 13'9" (3.86 x 4.21)

En-Suite

5'8" x 6'5" (1.73 x 1.97)

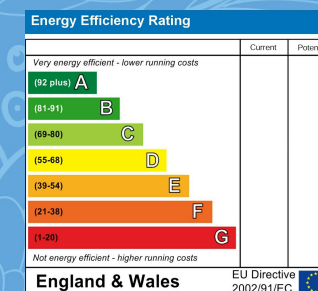


Your Property - Our Business

- Residential Estate Agents •
- Lettings and Property Managers •
- Land and New Homes Agents •

Leamington Spa Office
Somerset House
Clarendon Place
Royal Leamington Spa
CV32 5QN

01926 881144 • ehbresidential.com



Also at: Warwick, 17-19 Jury St, Warwick CV34 4EL