



GLEDHOW GARDENS, SW5

£900,000

Two double bedrooms
Communal gardens
Recently refurbished
Share of freehold
Separate kitchen
Wood flooring throughout

@marshandparsons
marshandparsons.co.uk

MARSH &
PARSONS



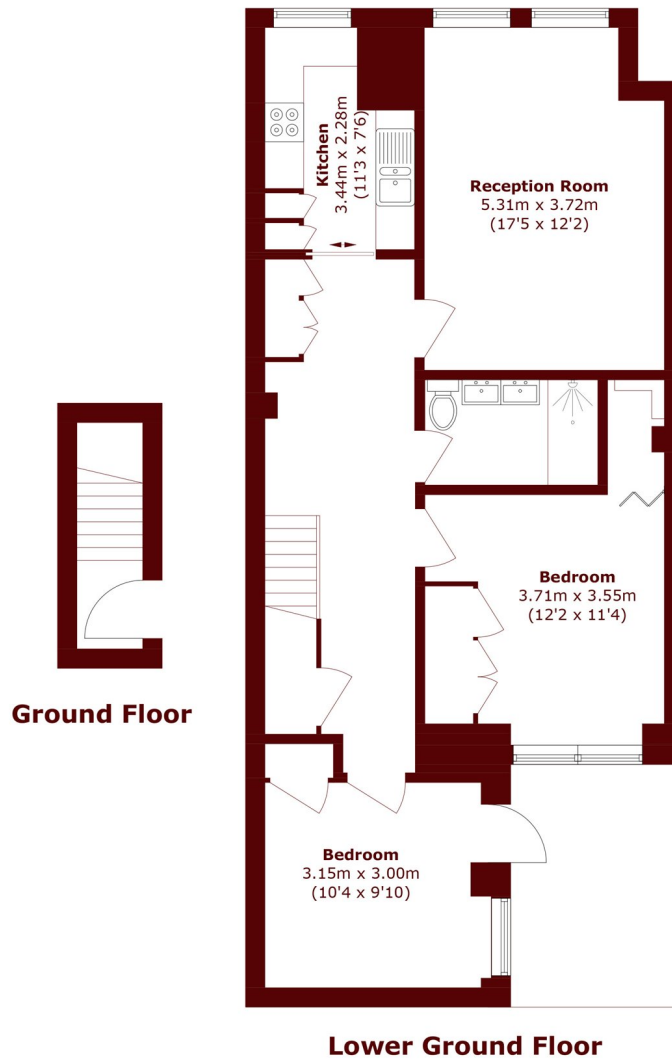
ABOUT THE PROPERTY

A beautifully refurbished two bedroom apartment located on the popular Gledhow Gardens in South Kensington with a private patio within a charming red-brick Victorian conversion. The property benefits from two double bedrooms, separate fully-integrated kitchen and access to a communal gardens directly opposite.

The address is ideally located for the numerous amenities found along the Old Brompton Road and Gloucester Road such as shops, quality restaurants, and traditional pubs. Gloucester Road, South Kensington & Earls Court Underground Stations are all conveniently located within a short walk.



STEP INSIDE GLEDHOW GARDENS



Total area (approx.): 81.4 sq. m (876.1 sq. ft)

Earls Court
020 7244 2210

Energy Rating: C We aim to make our particulars both accurate and reliable. However, they are not guaranteed; nor do they form part of an offer or contract. If you require clarification on any points then please contact us, especially if you're traveling some distance to view. Please note that appliances and heating systems have not been tested and therefore no warranties can be given as to their good working order

MARSH &
PARSONS