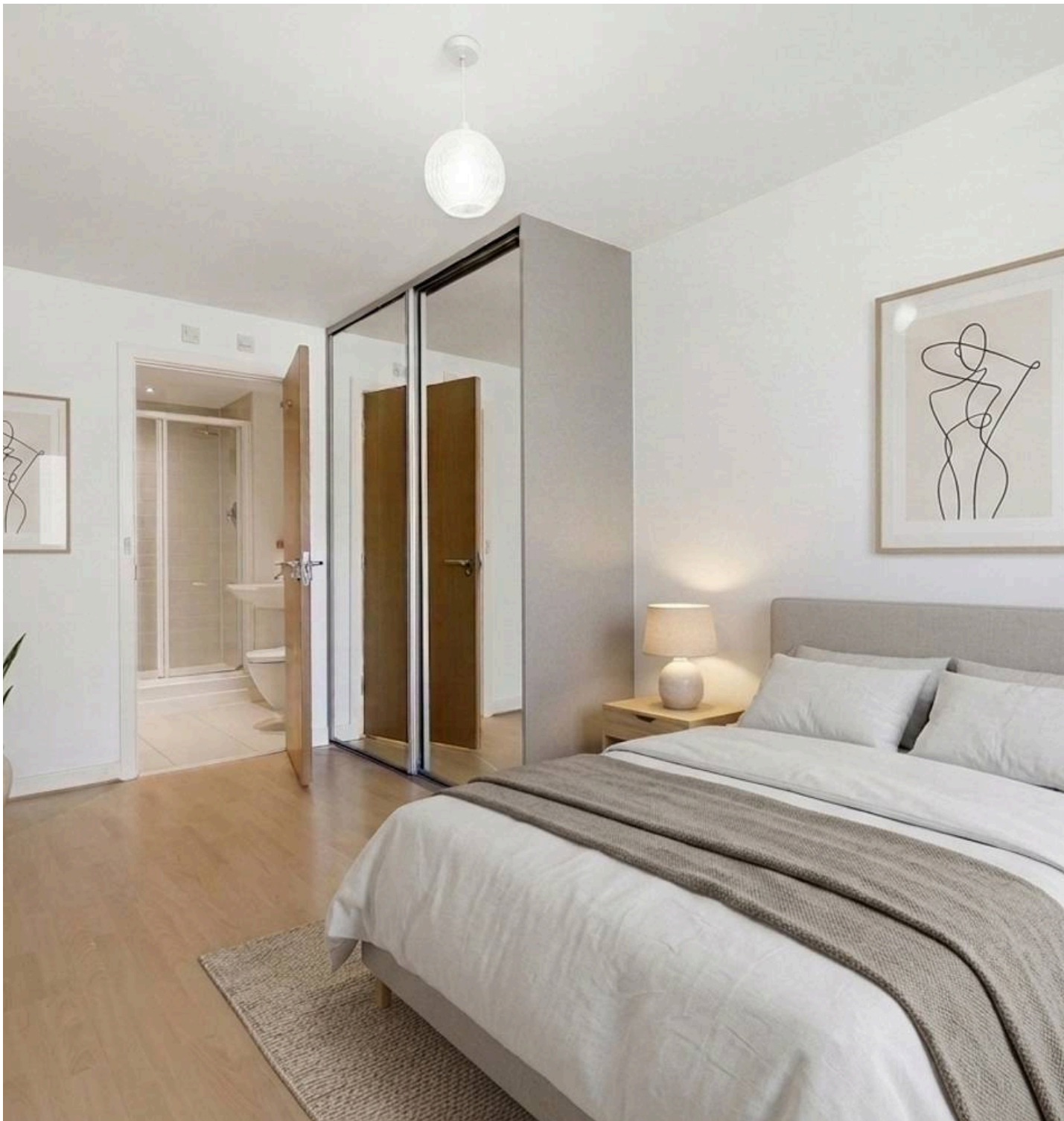




The Lock Building, Stratford, E15  
London

Guide Price £325,000  
Enhanced with AI b



## Flat 102

The Lock Building, London

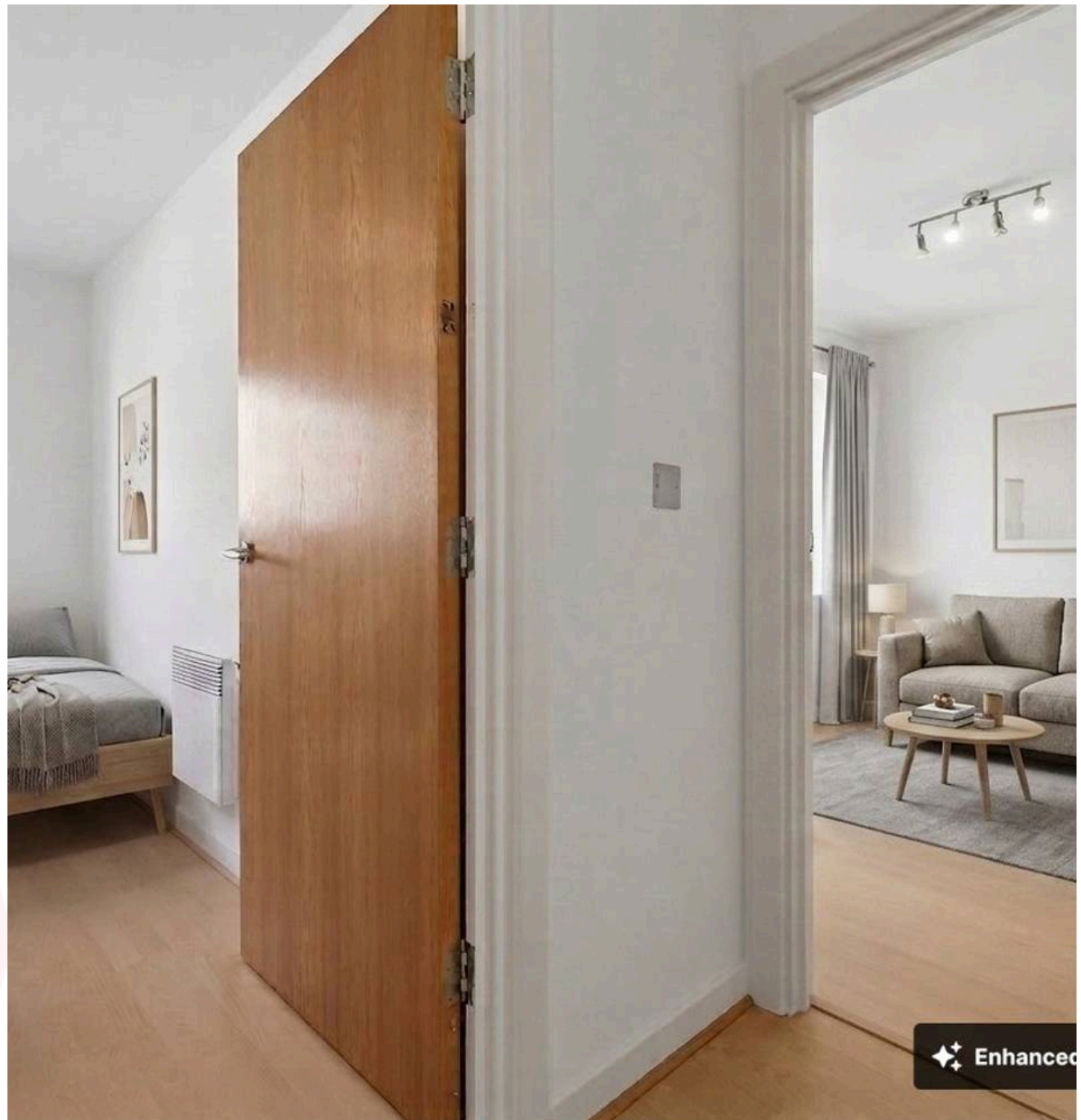
- Two Bed Apartment
- Private Balcony
- Canal Views
- Chain Free
- The Lock Building , High Street, Stratford
- Close To Amenities
- Lift Access
- Great First Time Buy
- Building Concierge

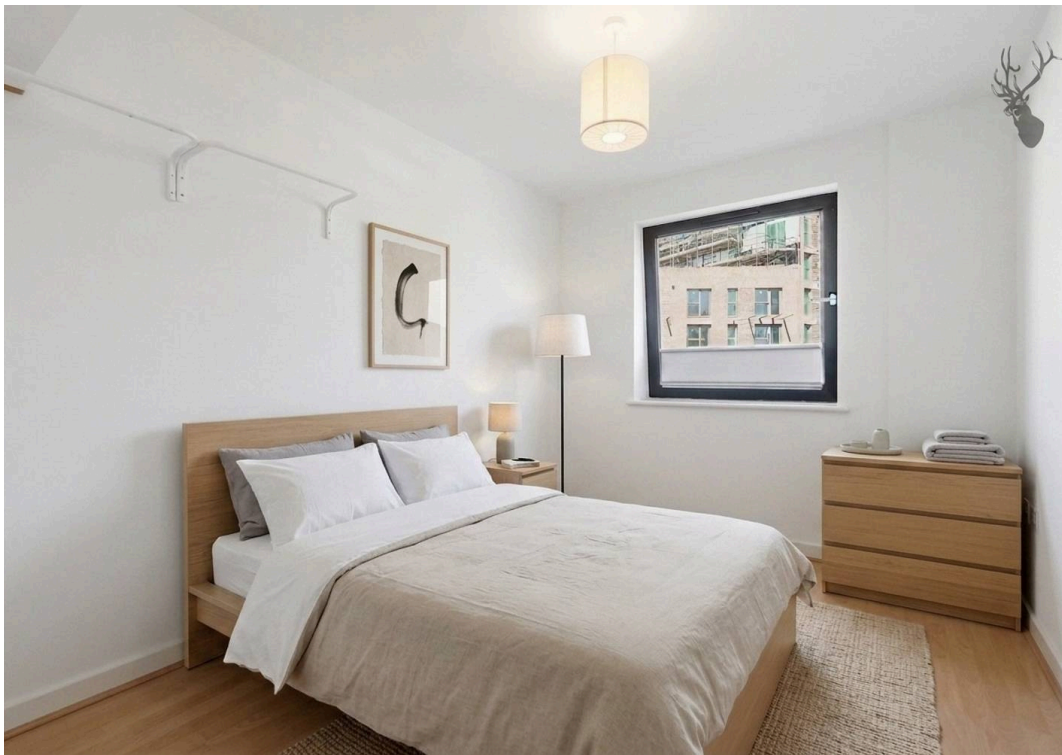
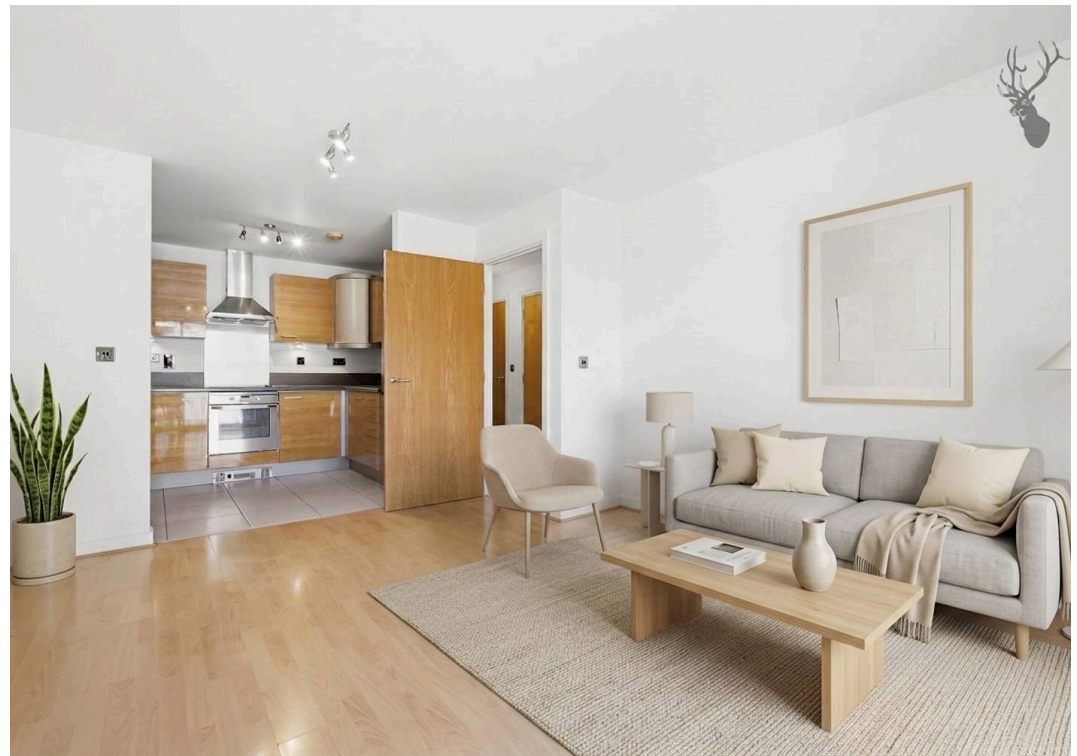
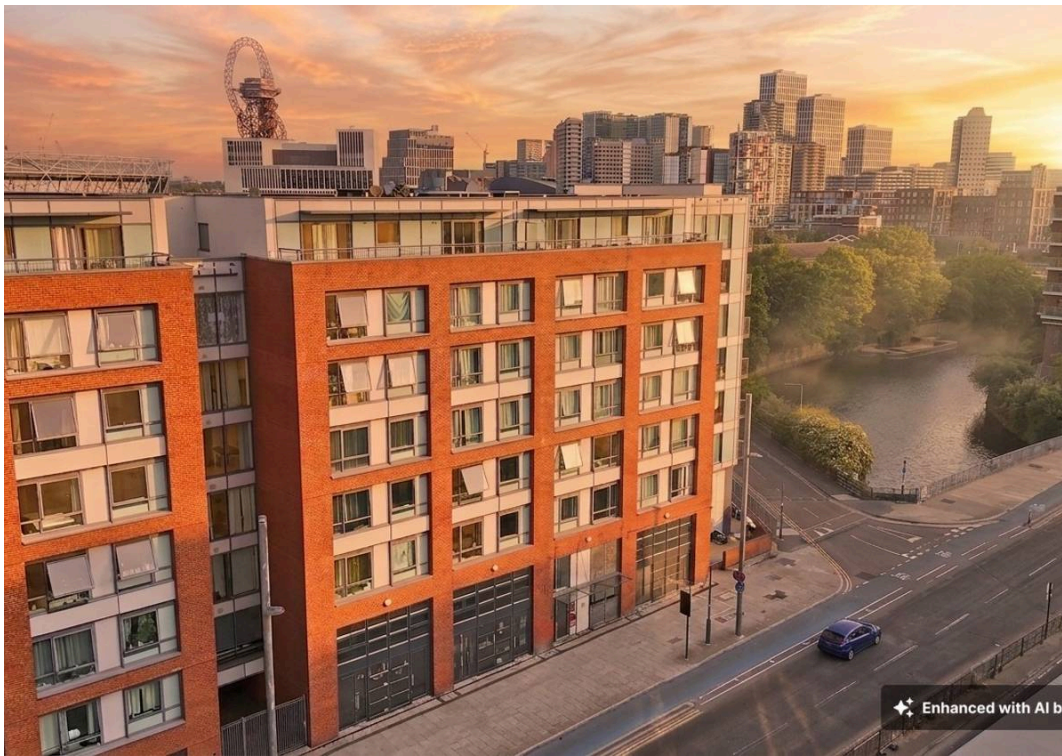




Guide Price - £325,000 to £350,000

Presenting a superb two-bedroom apartment situated in the sought-after Lock Building on High Street, Stratford, this modern residence offers a stylish and convenient lifestyle, making it an ideal choice for first-time buyers. The apartment is offered chain free, ensuring a straightforward and efficient purchase process. Upon entering, you are greeted by a spacious entrance hall that leads into a bright and airy open-plan living area, thoughtfully designed to maximise space and natural light. The living space seamlessly connects to a contemporary kitchen, complete with integrated appliances and sleek cabinetry, offering both functionality and a modern aesthetic. The highlight of the apartment is the private balcony, which provides tranquil canal views and an inviting spot to unwind or entertain guests. Both bedrooms are generously proportioned, with the principal bedroom benefitting from ample storage space. The second bedroom is well-sized, making it perfect for guests, a home office or additional storage needs. The stylish bathroom is finished to a high standard, featuring modern fittings and a clean, neutral décor. Residents of The Lock Building enjoy the convenience of lift access, making the property accessible for all, as well as the reassurance of a secure entry system and a concierge service. The location is second to none, with Stratford's vibrant array of amenities, including shops, cafes, and restaurants, all within easy reach. Excellent transport links are available nearby, providing quick and direct access to Central London and beyond, making this an excellent base for commuters. The apartment's well-maintained interiors, combined with its desirable setting and thoughtful design, create a welcoming and comfortable home environment. Whether you are looking to take your first steps into the property market or to





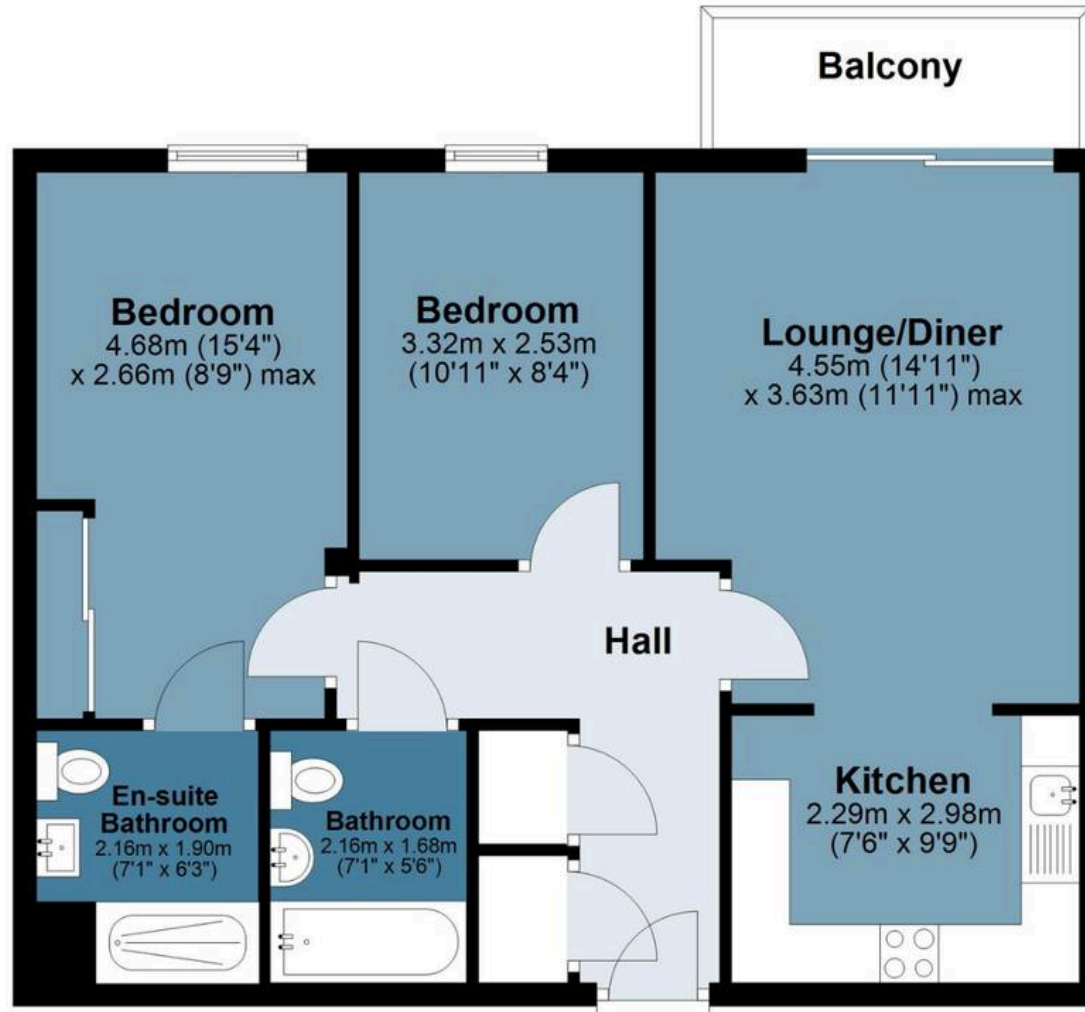
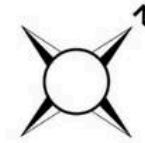


# The Lock Building

Approx. Gross Internal Area 62.3 sq. metres (670.1 sq. feet)

## Third Floor

Approx. 62.3 sq. metres (670.1 sq. feet)  
(excluding Balcony)



Measurements are approximate and for illustration purposes only. While we do not doubt the accuracy and completeness, we advise you conduct a careful independent assessment of the property to determine monetary value

# FROM EAST LONDON ENERGY TO WEST ESSEX EASE

## We Make Moving Home Easy.

At Butler and Stag, we do more than just connect London to West Essex – we make the move seamless. With offices spanning from vibrant East London to the tranquillity of West Essex, we understand the nuances of each area and the journey people take between them. Our marketing goes beyond standard listings, showcasing every property with precision, creativity, and reach that others simply can't match. Coupled with an unparalleled attention to detail, from first enquiry to final move-in, we ensure every client and customer feels informed, supported, and confident. Simply put, we do the little things that make a big difference, setting us apart in every step of the property experience.



LONDON   STRATFORD   SOUTH WOODFORD   BUCKHURST HILL   LOUGHTON   EPPING   BEYOND

# Like what you see? Let's talk

Book your **FREE** valuation now



020 8102 1236

[london@butlerandstag.com](mailto:london@butlerandstag.com)

508 Roman Road, Bow, London, E3 5LU

[butlerandstag.uk](http://butlerandstag.uk)

IMPORTANT NOTICE - These particulars have been prepared in good faith and they are not intended to constitute part of an offer or contract. We have not performed a structural survey on this property and the services, appliances and specific fittings have not been tested. All photographs, measurements, floor plans and distances referred to are given as a guide and should not be relied upon.

BUTLER & STAG

