



Fenman Mews, Worsley, M28

£1,035 Per Month

Welcome to Simple Life's Holyoake Road homes. Tucked away from the hustle and bustle, Holyoake Road is a spectacular site close to the centre of Walkden and a stones throw away from the train station.

The two double bedroom Alder is a spacious apartment perfect for city living. With an open plan kitchen/diner attached to a light and airy living room, it is the perfect space for entertaining guests. Benefiting from two bathrooms – one en-suite and another full bathroom suite – the apartment is great for friends sharing or couples who enjoy having a little extra room.

Complete with integrated kitchen appliances, including a washing machine, dishwasher and hob/oven, isn't it time for you to start living the Simple Life?

Walkden offers Holyoake Road a local town centre which is great for shopping, food, socialising and leisure facilities. By car, Manchester city centre is only 25 minutes away, where you will find a more extensive range of shops and restaurants.

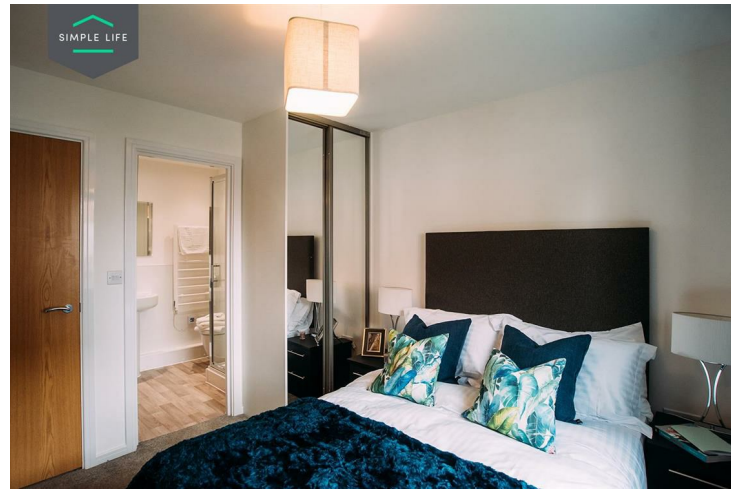
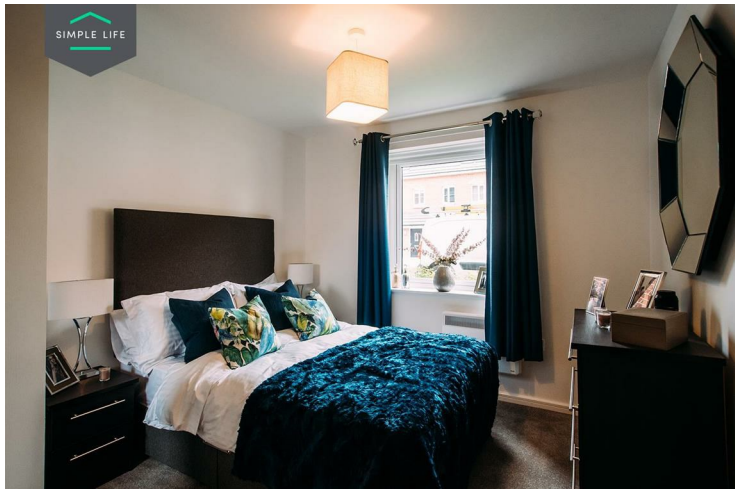
There are a number of schools local to the development, as well as plenty of local transport links.

Walkden train station runs just behind the site with regular services to Manchester and other neighbouring areas – excellent for an easy commute.

To visit Holyoake Road, please use postcode M28 3DL.

Deposit £1190
Holding Deposit £230
Council Tax A
Unfurnished
Available 21st August 2026





Key Features

- Allocated parking space
- Fitted wardrobes to master bedroom
- Washing/drying machine
- Modern, white kitchen units
- White blinds in bedrooms
- Secure-By-Design windows and doors
- Integrated kitchen appliances
- Light wash wood effect flooring
- Light grey carpets in the bedrooms
- Full length grey curtains in living area

Location

