



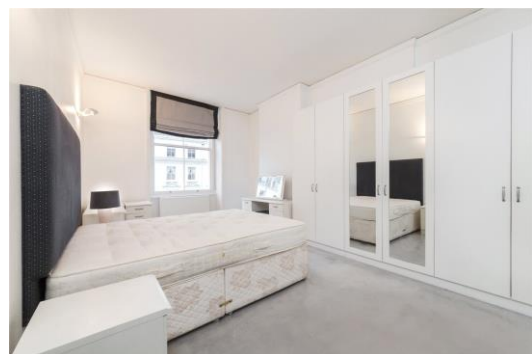
Warrington Crescent

Little Venice, W9

£3,500 per month
(£807.69 per week)

A spacious 2 bedroom conversion apartment on the 2nd floor (with lift) of this stucco fronted building in one of Little Venice's premier crescents. The apartment comprises 2 double bedrooms, 2 bathrooms, eat-in kitchen & spacious reception. EPC C.

CHESTERTONS



Warrington Crescent

Little Venice, W9

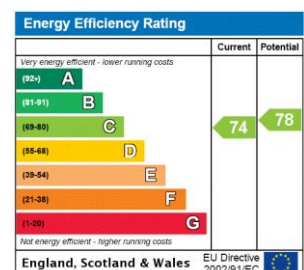
- An Attractive Stucco Fronted Period Property
- Two Double Bedrooms & Two Bathrooms
- Contemporary Finish & Access To Communal Gardens
- Close To Warwick Avenue Underground Station
- EPc Rating C



A spacious and bright 2 double bedroom conversion apartment on the 2nd floor (with lift) of this beautiful stucco fronted period building in one of Little Venice's premier crescents. The apartment comprises 2 double bedrooms, 2 bathrooms (one of which is en-suite to master), smart eat- in kitchen and a modern, spacious reception room.

Perfectly located for Warwick Avenue Underground Station, the Canal and the cafes of Formosa Street, and offering very easy access to Paddington Mainline Station and the A40 Westway.

Minimum Term: 12 months
Deposit Required: 5 weeks
Local Authority: Westminster City Council
Council Tax Band: G
EPC Rating: C
Unfurnished

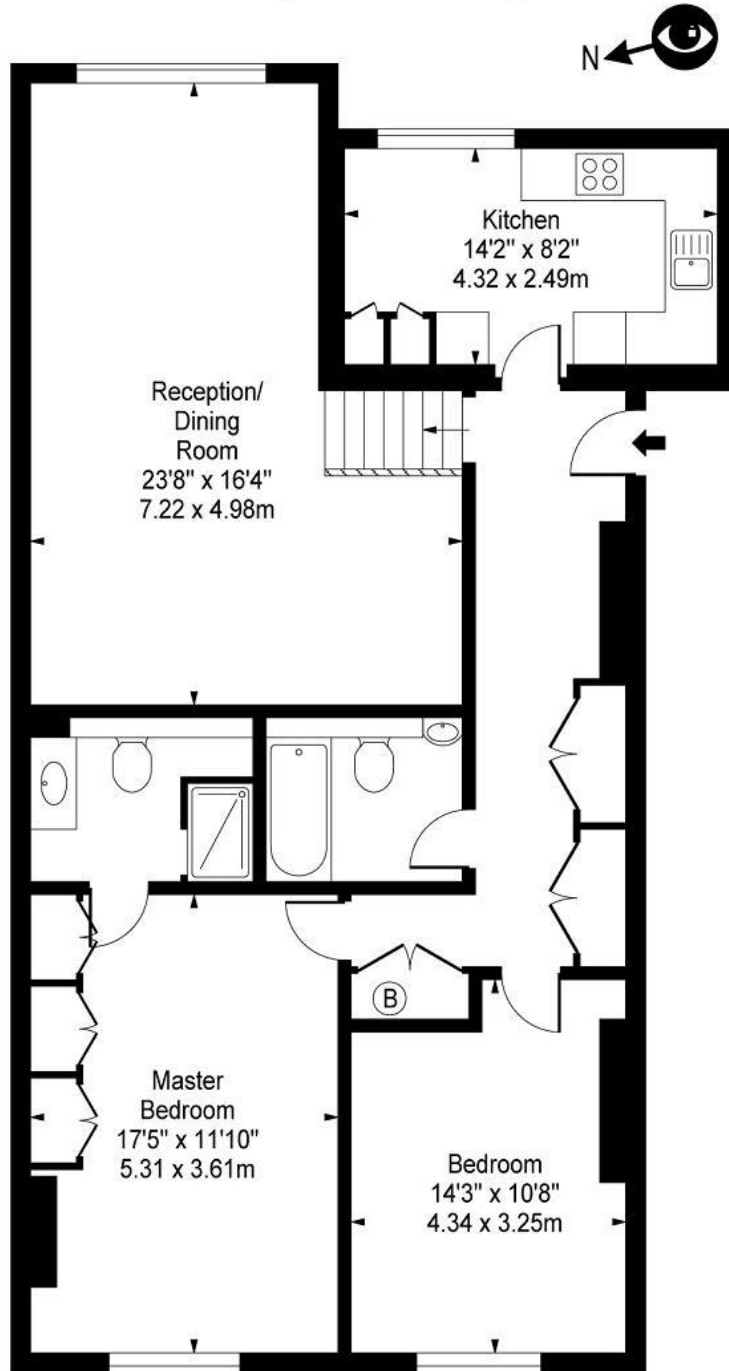


Chestertons Little Venice Lettings

26 Clifton Road
Maida Vale
London
W9 1SX
littlenicelettingsusers@chestertons.co.uk
02072662369
chestertons.co.uk

Additional tenant charges apply (fees apply to non-AST tenancies only)
Tenancy Agreement Fee: £300
References per Tenant/Guarantor: £60
Inventory check (approx. £100 – £250 inc. VAT)
chestertons.co.uk/property-to-rent/applicable-fees

Warrington Crescent, W9



Second Floor

Approx Gross Internal Area **1100 Sq Ft - 102.19 Sq M**

For Illustration Purposes Only - Not To Scale

Floor Plan by www.bpmmediagroup.com

Ref: No. P53243

