



## Baltimore Wharf, E14

### £450,000

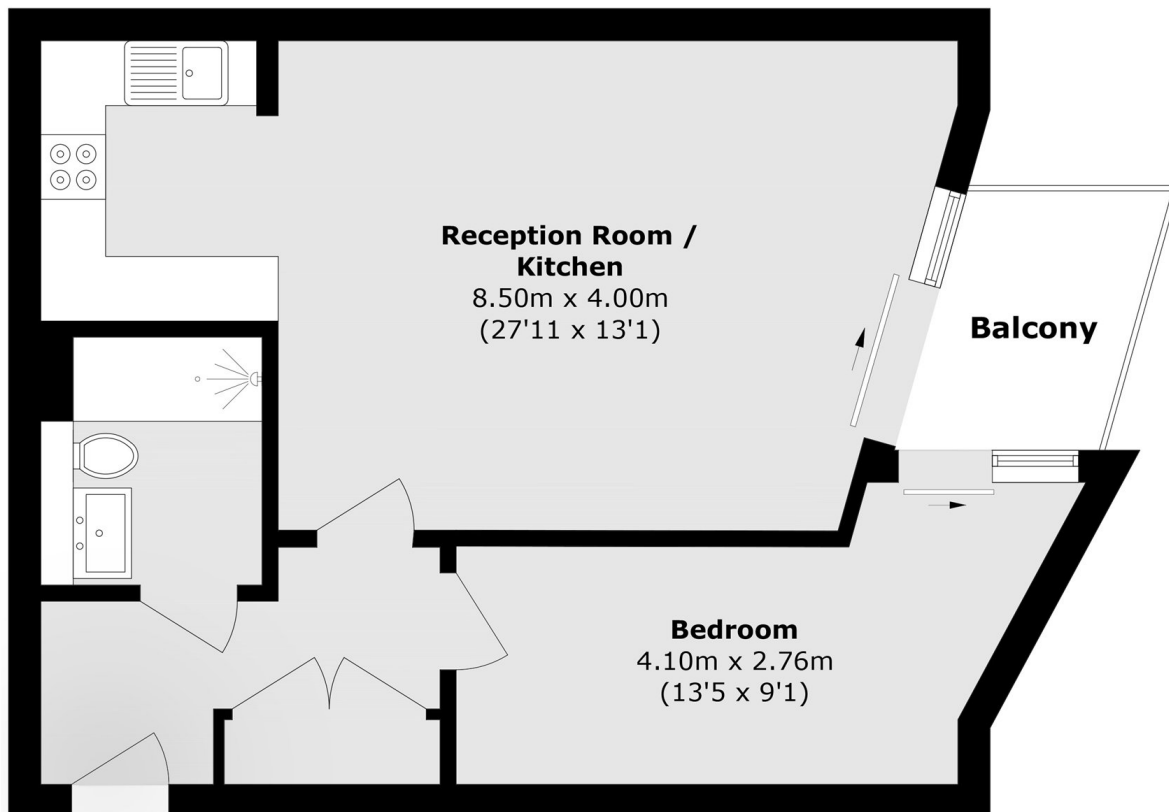
Set within the highly sought-after Baltimore Wharf development, this charming one-bedroom apartment benefits from an open-plan reception area, a private balcony and concierge service. The property is offered to the market chain-free.

Baltimore Wharf is conveniently located just 500 feet from Crossharbour DLR station, providing excellent transport links across the City.

### Features

- Sought After Development
- Private Balcony
- Modern Throughout
- Concierge Service
- Chain Free
- Open Plan Reception

# Baltimore Wharf, London, E14



Total area (approx.): 58.2 sq. m (626.4 sq. ft)

Balcony area (approx.): 4.5 sq. m (48.4 sq. ft)