



11 Appersett Close, Harrogate

£435,000 Guide Price



**YOUR AWARD
WINNING AGENT**

#DARINGTOBEDIFFERENT



A well-presented, modern four-bedroom detached house with gardens, driveway and garage, occupying a delightful position on this popular new development overlooking attractive communal green space. Outside, the enclosed rear garden has been thoughtfully arranged to provide an attractive and private outdoor environment, with lawned and patio areas offering space for both relaxation and entertaining. The driveway comfortably accommodates multiple vehicles, while the integral garage provides excellent storage and future potential, subject to any necessary approvals.

A particular feature of this property is its enviable setting overlooking an attractive central green with established landscaping, footpaths and a children's play area. The open aspect creates a wonderful sense of space and community, making this an ideal location for families, dog owners and those seeking a quieter residential setting without compromising on convenience.

Council Tax band: E

Tenure: Freehold

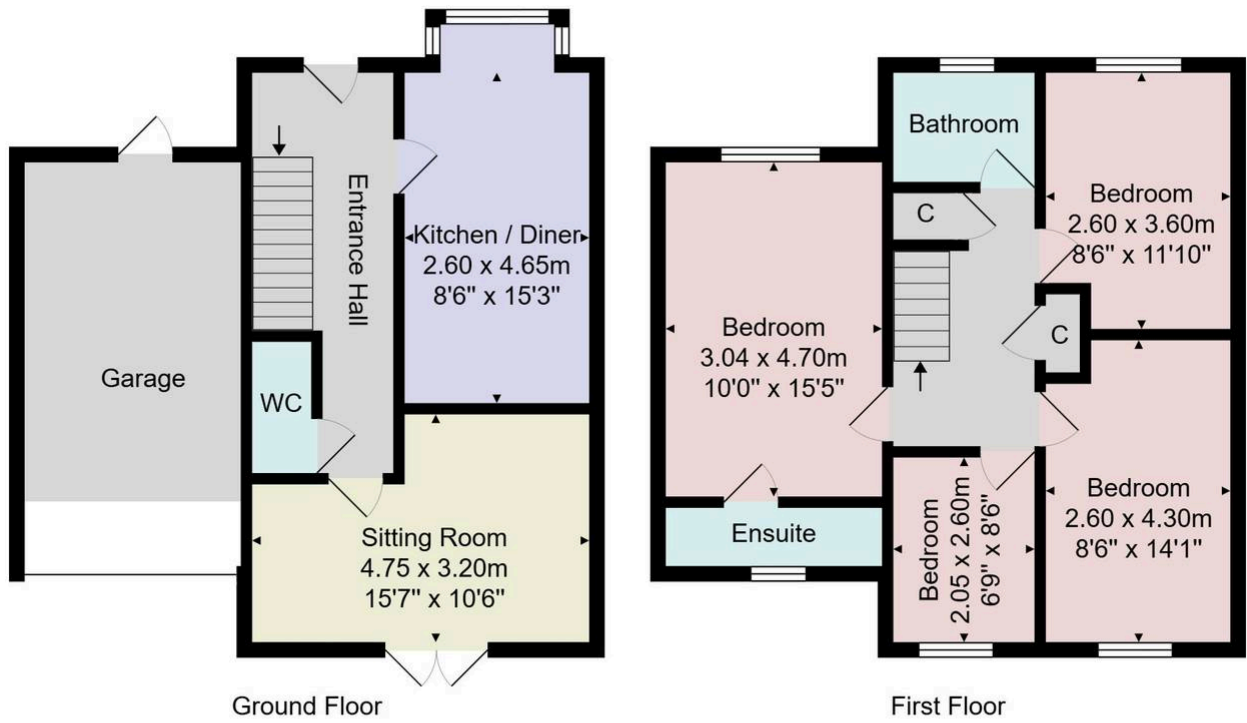
EPC Energy Efficiency Rating: B



Designed with both practicality and comfort in mind, the property provides generous living space throughout, complemented by a private south-west facing garden, ample driveway parking and an integral garage. At the heart of the home is a spacious kitchen dining room, providing an excellent setting for everyday family life, entertaining and social gatherings. The separate living room offers a relaxing retreat and enjoys direct access to the garden, allowing indoor and outdoor living to blend seamlessly during the warmer months.

The first floor comprises four well-proportioned bedrooms, including an impressive principal suite with en-suite shower room. Two further double bedrooms and a generous fourth bedroom provide flexibility for growing families, visiting guests or those seeking dedicated home-working space. A contemporary family bathroom and useful built-in storage complete the accommodation.





Total Area: 113.5 m² ... 1221 ft²

All measurements are approximate and for display purposes only.

No liability is accepted by either the agency or Box Property Solutions Ltd as to the exact measurements of the rooms.

Box Property Solutions Ltd retains the copyright on this plan and allows agents to use it with agreed permission.

