



# RESIDE

MANCHESTER



93 The Edge Clowes Street  
Salford, M3 5ND

**£2,500 PCM**



## 93 The Edge Clowes Street

, Salford, M3 5ND

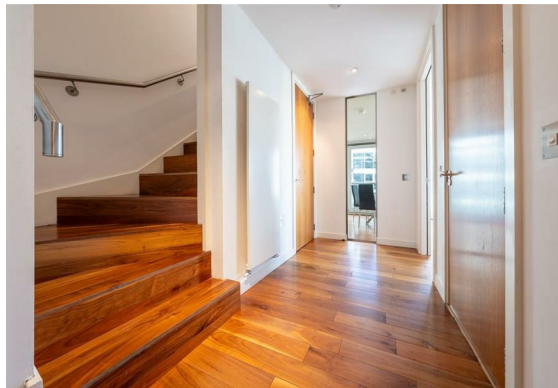
This spacious furnished two bedroom duplex is located on the 12th floor in The Edge.

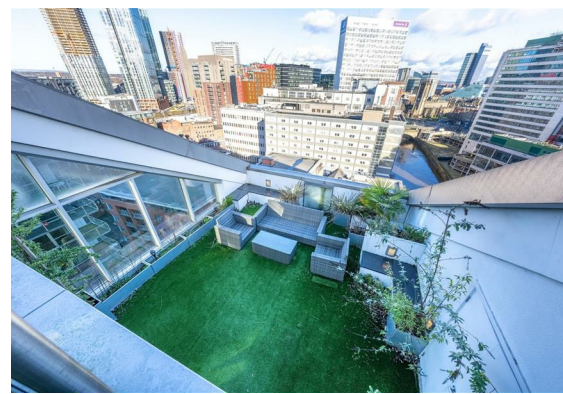
An open plan living / kitchen area providing you a great sense of space, the apartment benefits from two large terrace's, a spacious balcony, allocated tandem parking space and 24 hour concierge.

Residing on the River Irwell, the location of this building is only a stones throw away from Deansgate where many bars and restaurants reside and only a few minutes walk from Victoria Train Station.

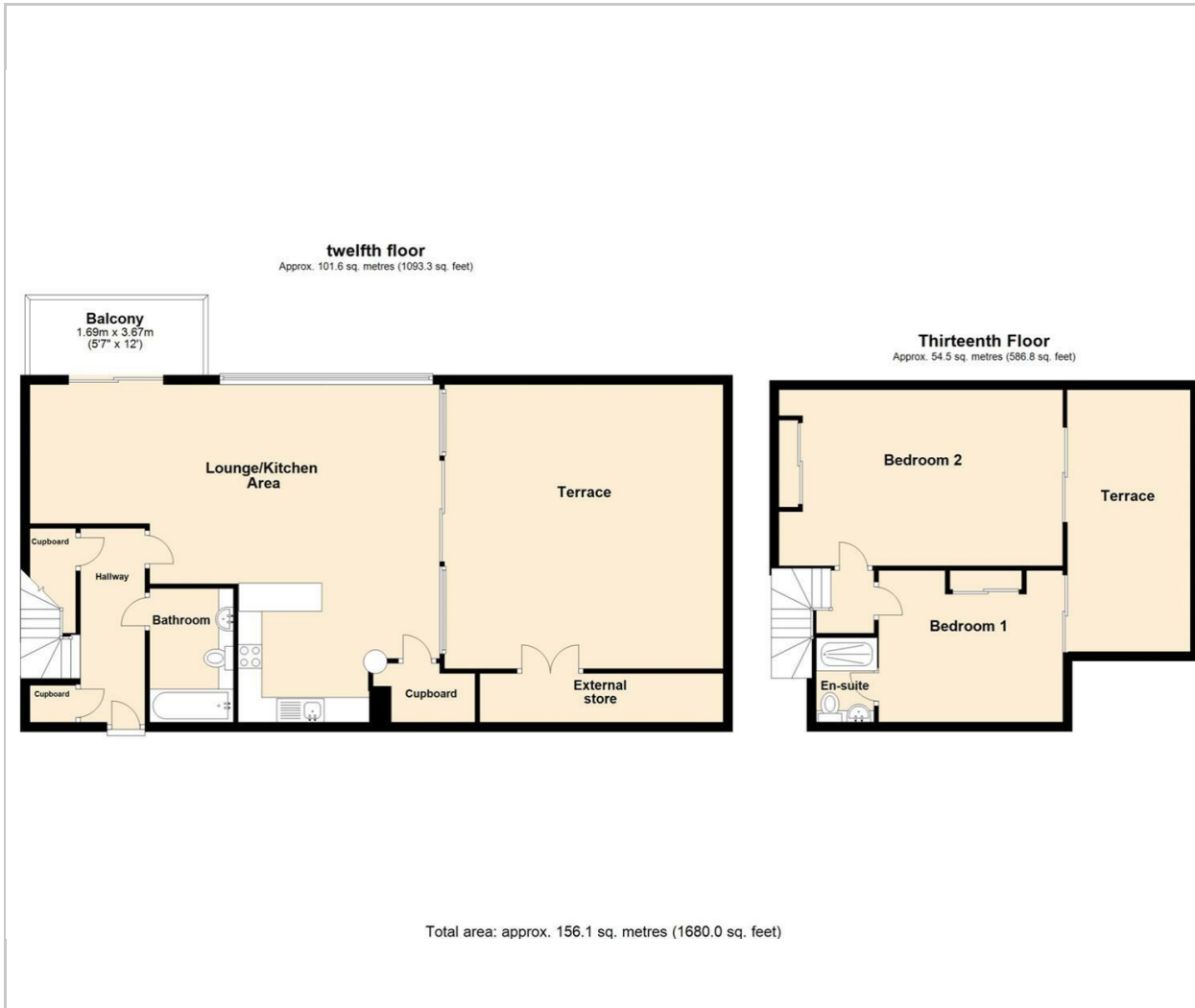
Viewings are highly recommended and available to rent immediately.

- Two Bedroom Duplex
- Two Bathrooms
- Furnished Throughout
- Allocated Tandem Parking Including
- Available Immediately
- EPC Rating D
- Two Large Terraces & Spacious Balcony
- Viewings Highly Recommended
- 24 Hour Concierge
- 2 Minute Walk To Deansgate

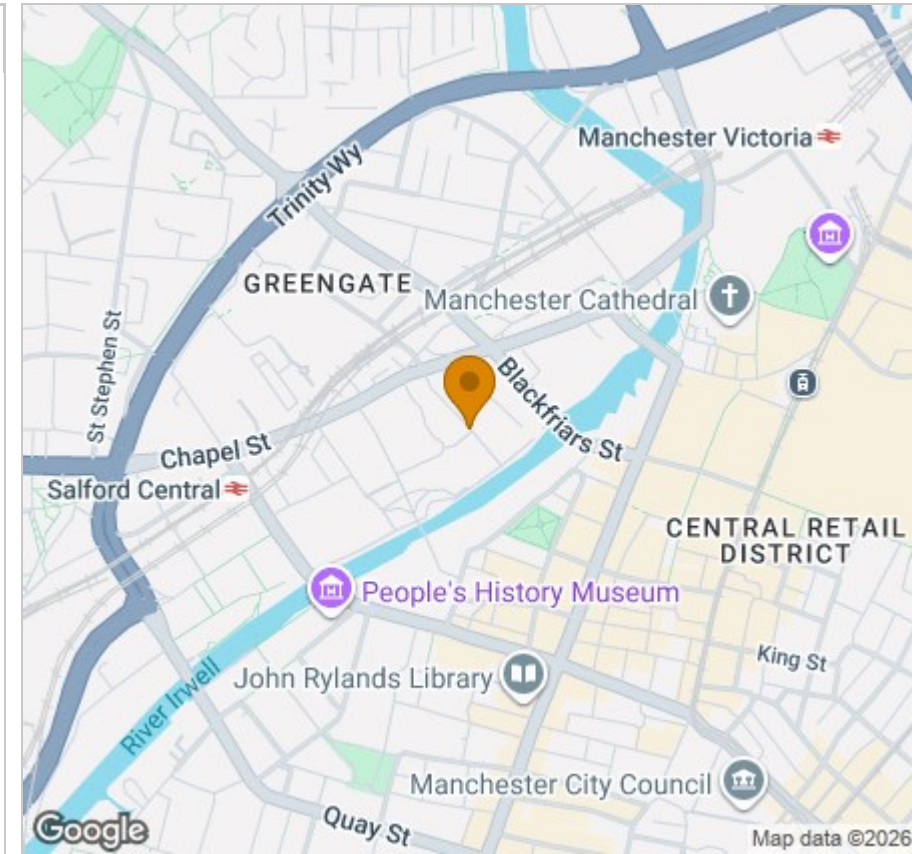




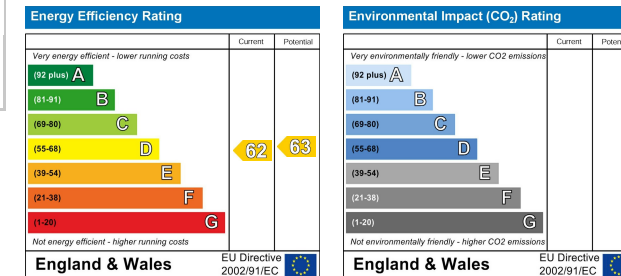
## Floor Plan



## Area Map



## Energy Efficiency Graph



## Viewing

Please contact our Reside Manchester Office on 0161 837 2840 if you wish to arrange a viewing appointment for this property or require further information.

These particulars, whilst believed to be accurate are set out as a general outline only for guidance and do not constitute any part of an offer or contract. Intending purchasers should not rely on them as statements of representation of fact, but must satisfy themselves by inspection or otherwise as to their accuracy. No person in this firm's employment has the authority to make or give any representation or warranty in respect of the property.

4 Jordan Street, Manchester, Greater Manchester, M15 4PY

Tel: 0161 837 2840 Email: [info@residemanchester.com](mailto:info@residemanchester.com) [www.reside-property.com](http://www.reside-property.com)