



Lewisham Way, SE14

£300,000

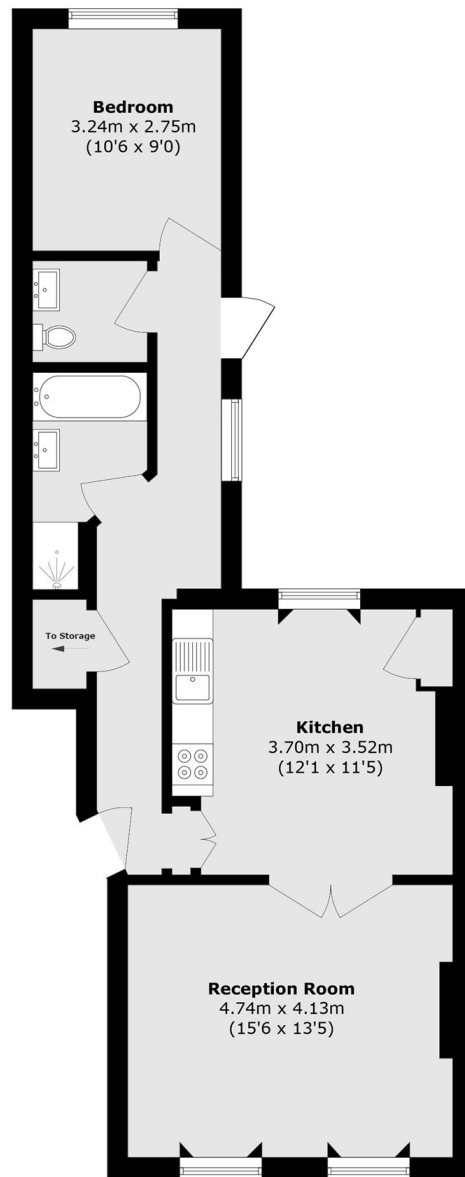
Ideally located on Lewisham Way, just a short walk from New Cross Rail and Overground Station, this charming one-bedroom conversion boasts the rare benefit of direct access to private rear garden.

Perfectly positioned within easy reach of the vibrant shops, cafés, and excellent transport links of New Cross, Deptford, and Lewisham, this property presents an outstanding opportunity for first-time buyers or savvy investors alike.

Features

- One Bedroom
- Ground Floor
- Access To Rear Garden
- Chain Free
- Investment Opportunity
- Close To Transport Links

Lewisham Way, London, SE14



Ground Floor

Total area (approx.): 63.9 sq. m (687.8 sq. ft)