



Locarno, Bramley Road, Sherfield-On-Loddon – RG27 0DA

£750,000 Freehold

BUILT CIRCA 1928 • POTENTIAL TO EXTEND SUBJECT TO USUAL PLANNING CONSENT • SUBSTANTIAL PLOT • VILLAGE LOCATION • OFF ROAD DRIVEWAY PARKING • WELL CONNECTED TRANSPORT LINKS • CLOSE PROXIMITY TO EXCELLENT SCHOOLS • 4 BEDROOM DETACHED RESIDENCE

01256 321777

www.thepropertyexplorer.co.uk

the property
explorer

Perfectly positioned in the village of Sherfield on Loddon, this attractive 1920's four-bedroom detached residence immediately stands out for its character, space and exceptional plot.

Council Tax band: F

Tenure: Freehold



- › BUILT CIRCA 1928
- › POTENTIAL TO EXTEND SUBJECT TO USUAL PLANNING CONSENT
- › SUBSTANTIAL PLOT
- › VILLAGE LOCATION
- › OFF ROAD DRIVEWAY PARKING
- › WELL CONNECTED TRANSPORT LINKS
- › CLOSE PROXIMITY TO EXCELLENT SCHOOLS
- › 4 BEDROOM DETACHED RESIDENCE





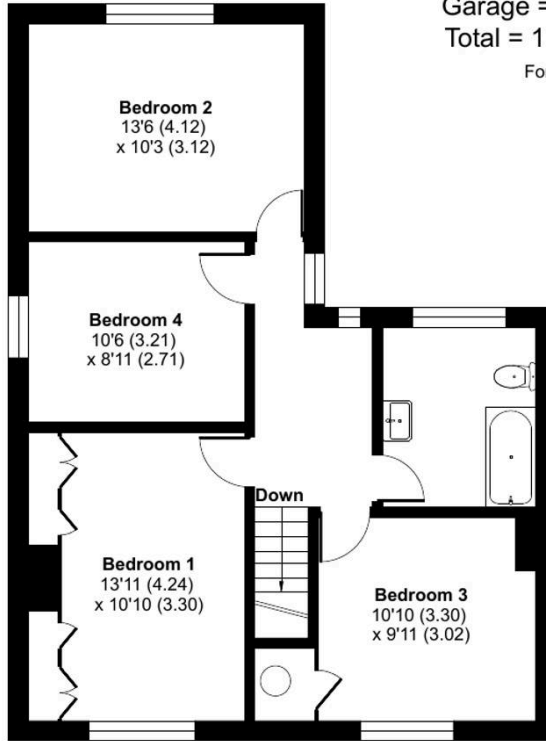
Bramley Road, Sherfield-on-Loddon, Hook, RG27

Approximate Area = 1568 sq ft / 145.6 sq m

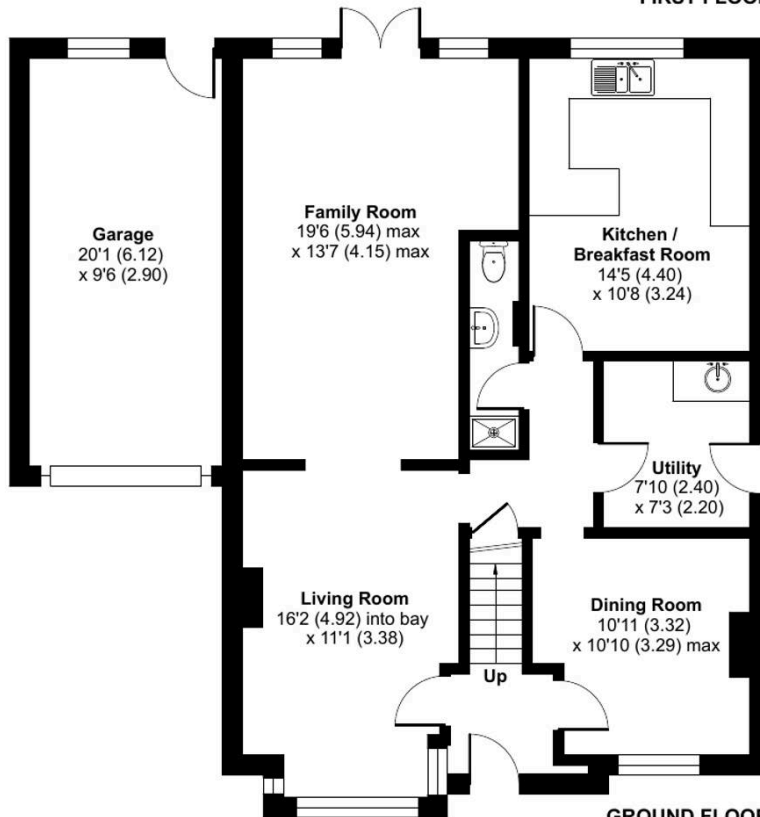
Garage = 191 sq ft / 17.7 sq m

Total = 1759 sq ft / 163.3 sq m

For identification only - Not to scale



FIRST FLOOR



GROUND FLOOR



Floor plan produced in accordance with RICS Property Measurement 2nd Edition, Incorporating International Property Measurement Standards (IPMS2 Residential). © nchecom 2026. Produced for Property Explorer. REF: 1440325