



Instinct Guides You



Camden Way, Dorchester, DT1 2RA Offers In Excess Of £300,000

- Castle Park
- Garage & Off Road Parking
- Southerly Garden
- Well Presented
- Three Bedrooms
- Convenient Location
- Kitchen/Diner
- Cul-De-Sac



Registration No. 08079158 Directors Mr Wilson, Mr Tominey

Courtesy Notice Upon using WilsonTominey as selling agents ensure we are made aware of contractual obligations you may be under. We can then proceed accordingly.

WilsonTominey Ltd
15 Westham Rd.
DT4 8NS

T 01305 775500
E sales@wilsontominey.co.uk
W www.wilsontominey.co.uk



Situated within the popular location of Castle Park in Dorchester, this well presented three bedroom home offers a modern kitchen dining arrangement, a spacious reception room, a southerly rear garden, off road parking and a GARAGE. The location is particularly sought after for its excellent school catchment and convenient access to a range of local amenities, making it an ideal setting for family living.

The accommodation is entered via a hallway with stairs rising to the first floor. The reception room is positioned to the front and provides a comfortable living space with a large window allowing natural light to fill the room, along with ample space for a range of furnishings.

To the rear, the kitchen dining room forms the heart of the home and has been fitted with a range of contemporary base and eye level units with generous work surfaces and space for appliances. There is ample room for a dining table, and doors open out to the rear garden, creating a natural flow between inside and out.

To the first floor, there are three bedrooms. Bedroom one is a well proportioned double with fitted wardrobes, while bedroom two is another comfortable double also benefitting from built in storage. Bedroom three offers flexibility as a further bedroom, nursery or study. The bathroom is fitted with a bath with shower over, wash hand basin and WC, finished in a modern style.

Externally, the rear garden is laid to lawn with a large decked seating area, providing an ideal space for outdoor dining and relaxation in the southerly sun. A pathway leads through the garden towards the rear access, off road parking and garage. A pleasant frontage, completes this well balanced home in a convenient Dorchester location.

Lounge 13'6" max x 13'5" max (4.14 max x 4.1 max)

Kitchen/Diner 16'7" x 9'10" (5.08 x 3.02)

Bedroom One 11'3" x 10'5" (3.45 x 3.18)

Bedroom Two 10'5" max x 8'6" max (3.18 max x 2.61 max)

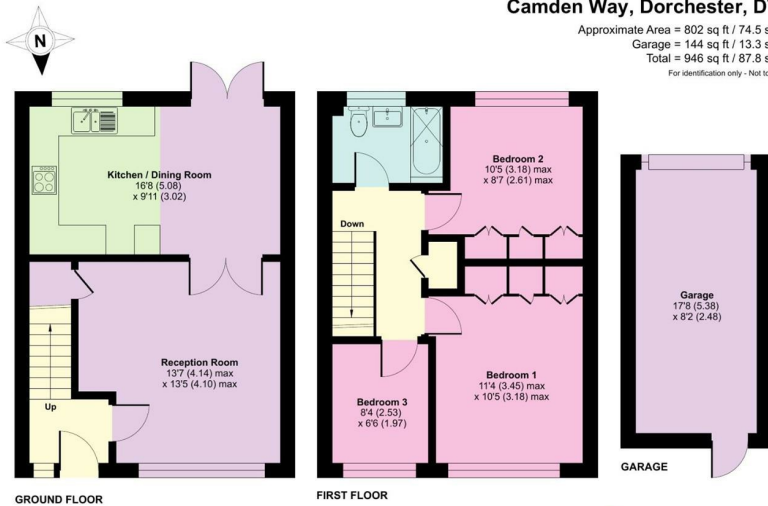
Bedroom Three 8'3" x 6'5" (2.53 x 1.97)





Camden Way, Dorchester, DT1

Approximate Area = 802 sq ft / 74.5 sq m
 Garage = 144 sq ft / 13.3 sq m
 Total = 946 sq ft / 87.8 sq m
 For identification only - Not to scale



Floor plan produced in accordance with RICS Property Measurement Standards incorporating International Property Measurement Standards (IPMS Residential). ©rdcheom 2025. Produced for Mowlam Tominey Ltd. REF: 1443859



Energy Efficiency Rating		Current	Potential
Very energy efficient - lower running costs			
(92 plus) A			
(81-91) B			
(69-80) C			
(55-68) D		74	80
(39-54) E			
(21-38) F			
(1-20) G			
Not energy efficient - higher running costs			
England & Wales		EU Directive 2002/91/EC	

Environmental Impact (CO ₂) Rating		Current	Potential
Very environmentally friendly - lower CO ₂ emissions			
(92 plus) A			
(81-91) B			
(69-80) C			
(55-68) D			
(39-54) E			
(21-38) F			
(1-20) G			
Not environmentally friendly - higher CO ₂ emissions			
England & Wales		EU Directive 2002/91/EC	