

**Dial Lane,
Bristol, BS16 5UH**

PRICE: £1,800 PCM

Property Features

- Semi Detached Home
- Three Double Bedrooms
- En-Suite, Family Bathroom & W/C
- Available 1st June
- No Sharers or pets
- High Specification
- White Goods Included



Full Description

HALLWAY

KITCHEN

11'7" x 7'4" (3.53 x 2.24)

Integrated washing machine, oven, hob, extractor and fridge freezer.

CLOAKROOM

LOUNGE/DINER

16'5" x 12'2" (5 x 3.71)

BEDROOM 3

13'6" x 12'3" (4.11 x 3.73)

BATHROOM

BEDROOM 2

12'3" x 11'6" (3.73 x 3.51)

MASTER BEDROOM

12'10" x 12'3" (3.91 x 3.73)

ENSUITE

GARDEN

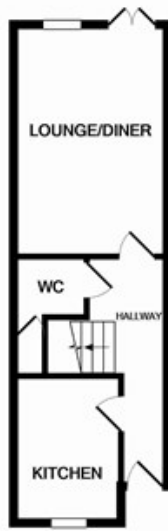
Off street parking for 2 cars.





Energy Efficiency Rating		Current	Potential
<i>Very energy efficient - lower running costs</i>			
(92 plus) A			
(81-91) B			
(69-80) C			
(55-68) D			
(39-54) E			
(21-38) F			
(1-20) G			
<i>Not energy efficient - higher running costs</i>			
England & Wales	EU Directive 2002/91/EC		

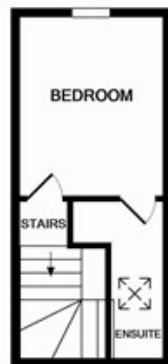
Environmental Impact (CO ₂) Rating		Current	Potential
<i>Very environmentally friendly - lower CO2 emissions</i>			
(92 plus) A			
(81-91) B			
(69-80) C			
(55-68) D			
(39-54) E			
(21-38) F			
(1-20) G			
<i>Not environmentally friendly - higher CO2 emissions</i>			
England & Wales	EU Directive 2002/91/EC		



GROUND FLOOR



1ST FLOOR



3RD FLOOR

Measurements are approximate. Not to scale. Illustrative purposes only
Made with MetroPix ©2020

4 Flaxpits Lane
Winterbourne
Bristol
BS36 1JX

www.aj-homes.co.uk
info@aj-homes.co.uk
01454 252140

Agents Note: Whilst every care has been taken to prepare these sales particulars, they are for guidance purposes only. All measurements are approximate are for general guidance purposes only and whilst every care has been taken to ensure their accuracy, they should not be relied upon and potential buyers are advised to recheck the measurements