



A Two Bedroom Two Bathroom Luxury Apartment in a sought after location
Eastbury Avenue, Northwood, Middlesex HA6 3FL

ROBSONS

Asking Price: £3,000 pcm

A Two Bedroom Two Bathroom Luxury Apartment in a sought after location

Eastbury Avenue, Northwood, Middlesex HA6 3FL

-
- BRAND NEW LUXURY APARTMENT
 - SECURE GATED DEVELOPMENT
 - MASTER BEDROOM with ENSUITE BATHROOM & BALCONY
 - LARGE SECOND BEDROOM
 - LIVING ROOM with BALCONY
 - DESIGNER FAMILY BATHROOM
 - DESIGNER KITCHEN
 - UNDERFLOOR HEATING with INDIVIDUAL ROOM CONTROL
 - ALLOCATED UNDERGROUND PARKING
 - COMMUNAL GARDEN
 - FURNISHED
-

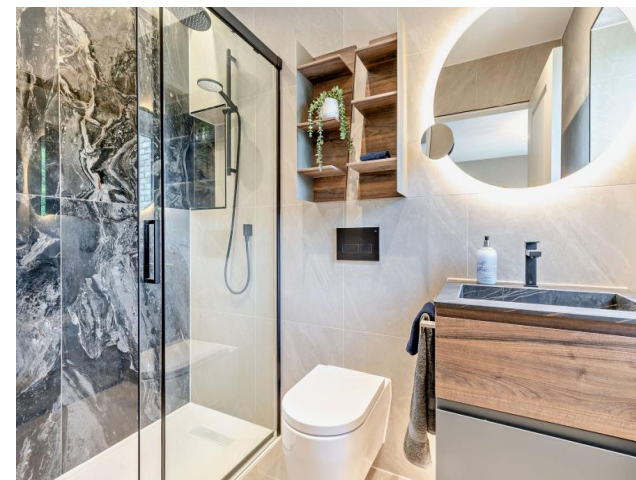
Description

A luxury two bedroom apartment situated within an exclusive gated development. Located on one of the area's most popular residential roads, the apartment has been expertly designed and skilfully finished to very a high standard. The apartment consists, entrance hall, designer bathroom and kitchen with integrated Bosch appliances, living room with balcony, principle bedroom with ensuite shower, fitted wardrobes and Juliet balcony, second bedroom with wardrobes and a useful large hallway storage cupboard containing the washer/dryer. Other features include, allocated underground parking, communal gardens with amenity space, secure cycle storage, audio & video entry system, underfloor heating with individual room control.

** An advance reservation payment of one weeks rent is required to secure

Location

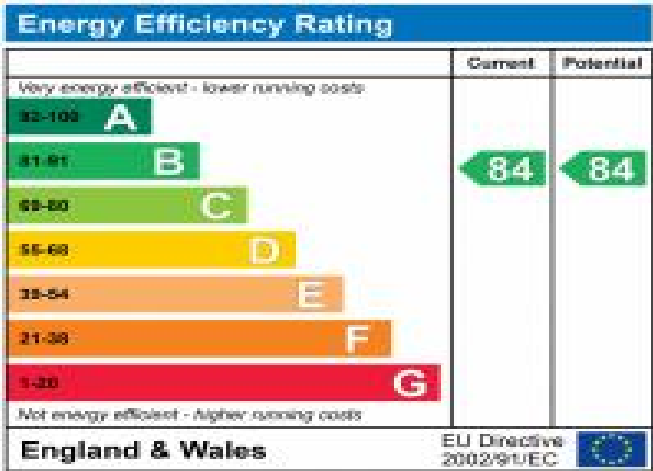
Ideally located on the edge of London, bordering the leafy community of Northwood, Asteria Place is a prestigious modern development of exceptional luxury apartments, positioned on one of the area's most popular residential roads, Eastbury Avenue. Asteria Place is within easy reach of local amenities, NATO HQ and Northwood Metropolitan line station.





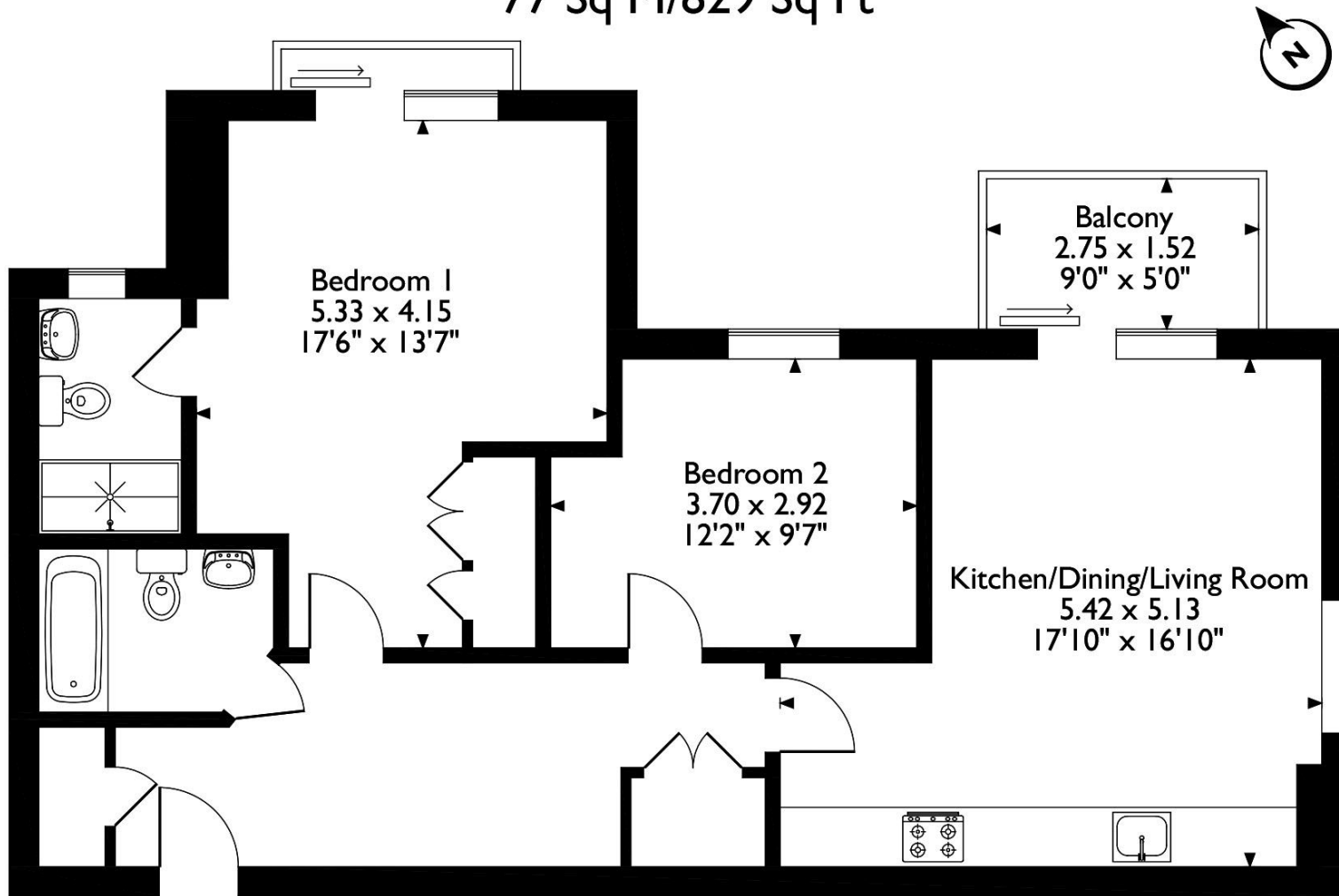
Additional Information

- Local Authority: Three Rivers District Council
- Council Tax Band: D
- Deposit Amount: £3,461.00
- Reservation Payment: One Week's Rent
- Energy Efficiency Rating: Band B
- Available Date: 20/08/2024



Asteria Place, Athello Lodge, Eastbury Avenue, Northwood

Approximate Gross Internal Area 77 Sq M/829 Sq Ft



Please note that the location of doors, windows and other items are approximate and this floorplan is to be used for illustrative purposes only. Unauthorized reproduction is prohibited.



REGISTERED OFFICE 2-4 PACKHORSE ROAD, GERRARDS CROSS, BUCKINGHAMSHIRE, ENGLAND, SL9 7QE. COMPANY NO. 07557114. VAT NO. GB211239453