



Bayswater Square, Town End Farm, SR5

HUNTERS[®]

HERE TO GET *you* THERE

Bayswater Square, Town End Farm, SR5

£142,000

* 3 BEDROOM * END-LINK * FREEHOLD * FRONT AND REAR GARDENS * HIGH SPEC * COUNCIL TAX BAND A * EPC RATING C *

This beautifully presented three-bedroom end-terrace home is situated in a highly sought-after residential area of Sunderland, offering stylish and versatile accommodation ideal for families, first-time buyers and professionals alike.

Arranged over three floors, the property has been thoughtfully updated and finished to a high standard throughout. The welcoming living and dining area is bright and spacious, benefitting from dual-aspect windows that allow plenty of natural light, a stylish media wall, and direct access to the attractive rear garden — perfect for both everyday living and entertaining.

Externally, the multi-level rear garden features a combination of paved and decked seating areas, together with a gazebo, creating a fantastic outdoor space to relax and enjoy. A well-maintained front garden further enhances the property's kerb appeal.

The modern fitted kitchen enjoys pleasant garden views and offers a practical yet stylish cooking space. To the first floor are two well-proportioned bedrooms, including a generous double and a comfortable single room, both benefitting from built-in wardrobes. The contemporary family bathroom is finished to an excellent standard and includes a free-standing bath, walk-in shower, heated towel rail, built-in storage and fully tiled walls.

Occupying the entire second floor, the impressive loft-converted master bedroom provides a peaceful retreat, complete with two Velux windows allowing for plenty of natural light. Modern radiators run throughout the home, which has been tastefully decorated in neutral tones and is ready to move straight into.

Overall, this is a superb example of a stylish and well-maintained end-terrace home in a popular location, ready for its next owners to enjoy.

Hunters Sunderland 11b Sea Road, Fulwell, Sunderland SR6 9BP | 0191 594 7788
sunderland@hunters.com | www.hunters.com



Floor 0



Floor 1



Floor 2



Approximate total area⁽¹⁾

85.8 m²
 924 ft²

Reduced headroom

7.9 m²
 85 ft²

(1) Excluding balconies and terraces

Reduced headroom

..... Below 1.5 m/5 ft

Calculations reference the RICS IPMS 3C standard. Measurements are approximate and not to scale. This floor plan is intended for illustration only.

Hallway

15'10" x 4'5"

Living/Dining Room

22'10" x 10'9"

Kitchen

10'3" x 7'3"

Landing

12'10" x 4'5"

Bedroom 2

13'7" x 9'5"

Bedroom 3

11'2" x 7'6"

Bathroom


9'6" x 7'1"

Landing

3'8" x 3'4"

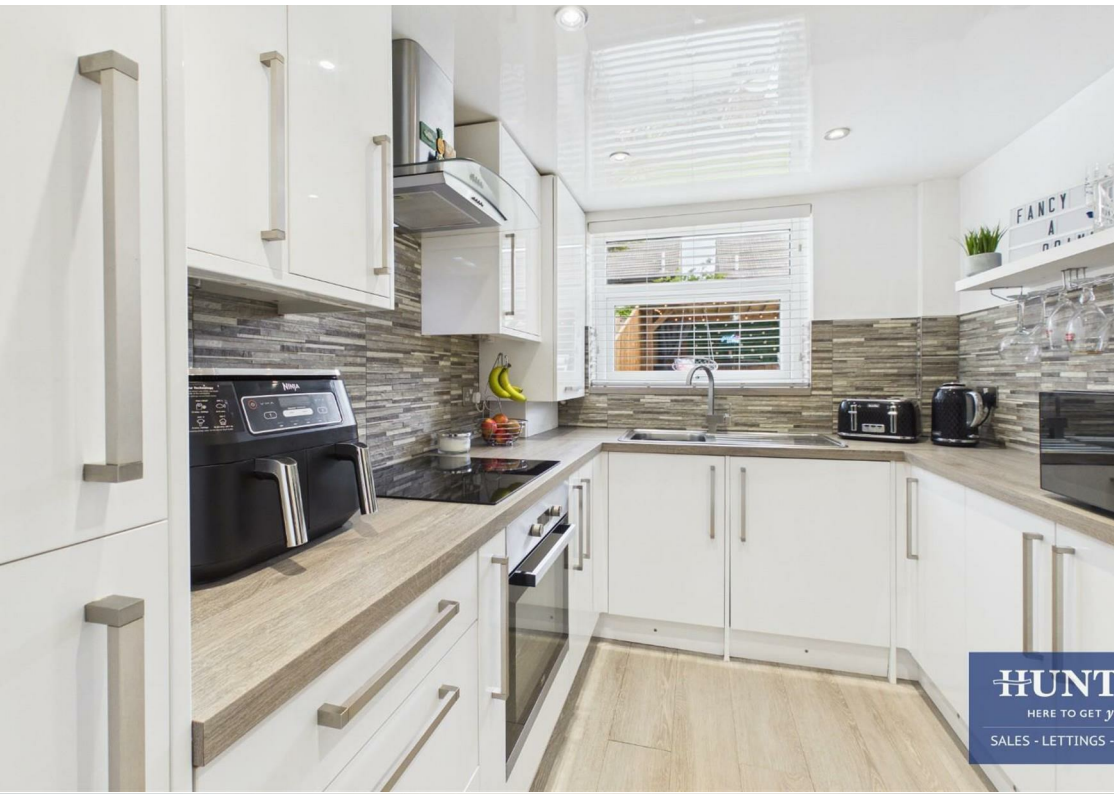
Bedroom 1

11'8" x 13'3"

Energy Efficiency Rating		
	Current	Potential
<i>Very energy efficient - lower running costs</i>		
(92 plus) A		
(81-91) B		
(69-80) C	69	75
(55-68) D		
(39-54) E		
(21-38) F		
(1-20) G		
<i>Not energy efficient - higher running costs</i>		
England & Wales	EU Directive 2002/91/EC	

These particulars are intended to give a fair and reliable description of the property but no responsibility for any inaccuracy or error can be accepted and do not constitute an offer or contract. We have not tested any services or appliances (including central heating if fitted) referred to in these particulars and the purchasers are advised to satisfy themselves as to the working order and condition. If a property is unoccupied at any time there may be reconnection charges for any switched off/disconnected or drained services or appliances - All measurements are approximate. If you are thinking of selling your home or just curious to discover the value of your property, Hunters would be pleased to provide free, no obligation sales and marketing advice. Even if your home is outside the area covered by our local offices we can arrange a Market Appraisal through our national network of Hunters estate agents.







HUNT
HERE TO GET YOU
SALES - LETTINGS -



HUNT
HERE TO GET YOU
SALES - LETTINGS -



HUNT
HERE TO GET YOU
SALES - LETTINGS -



HUNT
HERE TO GET YOU
SALES - LETTINGS -





HUNT
HERE TO GET
SALES - LETTINGS