



Goldhawk Road, W6

£450,000

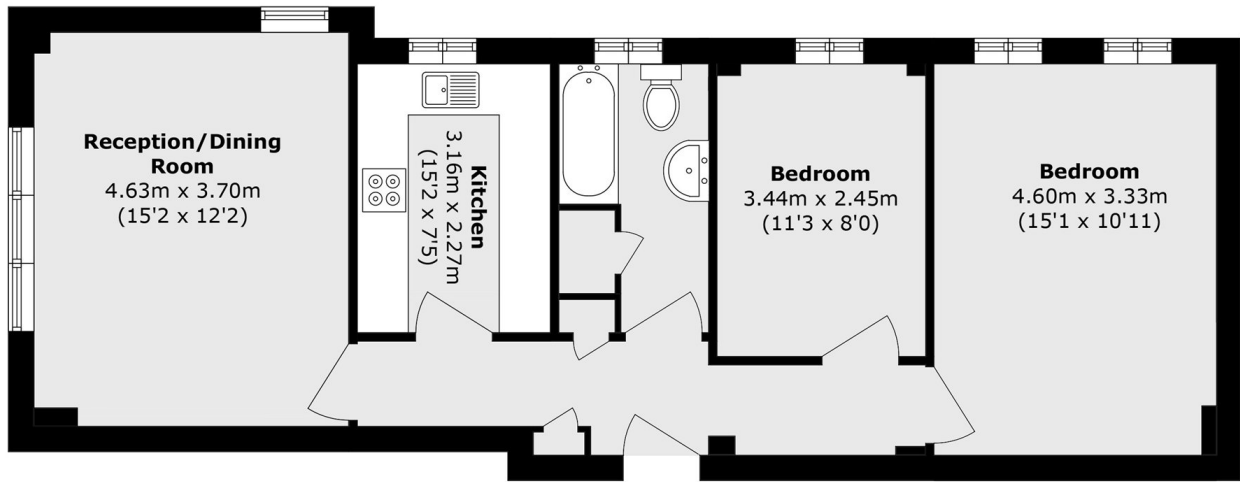
Dexters are proud to present this spacious two bedroom purpose built flat in Stamford Court.

Ideally Positioned moments from Stamford Brook Station, Ravenscourt Park as well as the array of amenities on King Street & Chiswick High Road as well as being a short distance from the River Thames with its riverside walks and pubs.

Features

- Two Bedrooms
- First Floor
- Well Maintained
- Private Parking
- Close To Transport
- Chain Free

Goldhawk Road, London, W6



Total area (approx.): 63.3 sq. m (681.3 sq. ft)