



West Street, Minehead, TA24 5HJ

welcome to

69 West Street, Minehead

Situated within a popular residential area of Minehead enjoying lovely views towards North Hill is this well presented semi-detached two bedroom bungalow. The property benefits from double glazing, gas central heating, garage & off street parking, front & rear gardens.



Double Glazed Front Door

Leading to

Entrance Hall

With fitted carpet, radiator, coving, built in airing cupboard with gas fired boiler, access to roof space, doors to

Lounge

16' 4" max x 11' 11" max (4.98m max x 3.63m max)
Double glazed window to front enjoying views towards North Hill, fitted carpet, radiator, coving, TV point, telephone point.

Kitchen

10' 8" x 7' (3.25m x 2.13m)
Double glazed window to front enjoying views towards North Hill, a range of fitted base and wall units, worktop surfaces, inset one and one half bowl sink unit with mixer tap, part tiled splashbacks, integrated electric oven, inset electric hob with cooker hood over, integrated fridge freezer, integrated washing machine, coving.

Bedroom One

12' 1" max x 8' 8" (3.68m max x 2.64m)
Double glazed window to rear, fitted carpet, coving, radiator, built in wardrobe.

Bedroom Two

10' 5" x 8' 6" (3.17m x 2.59m)
Double glazed window to rear and double glazed door to rear garden, fitted carpet, radiator, coving.

Bathroom

Double glazed window to side, a fitted suite comprising panelled bath with shower unit over and bi-folding shower screen, low level WC, vanity wash hand basin with cupboard under, heated towel rail incorporating small radiator, part tiled surrounds, coving, built in cupboard.

Outside

A small tiered front garden with gravelled beds, driveway to side providing off road parking and access to garage and front door.

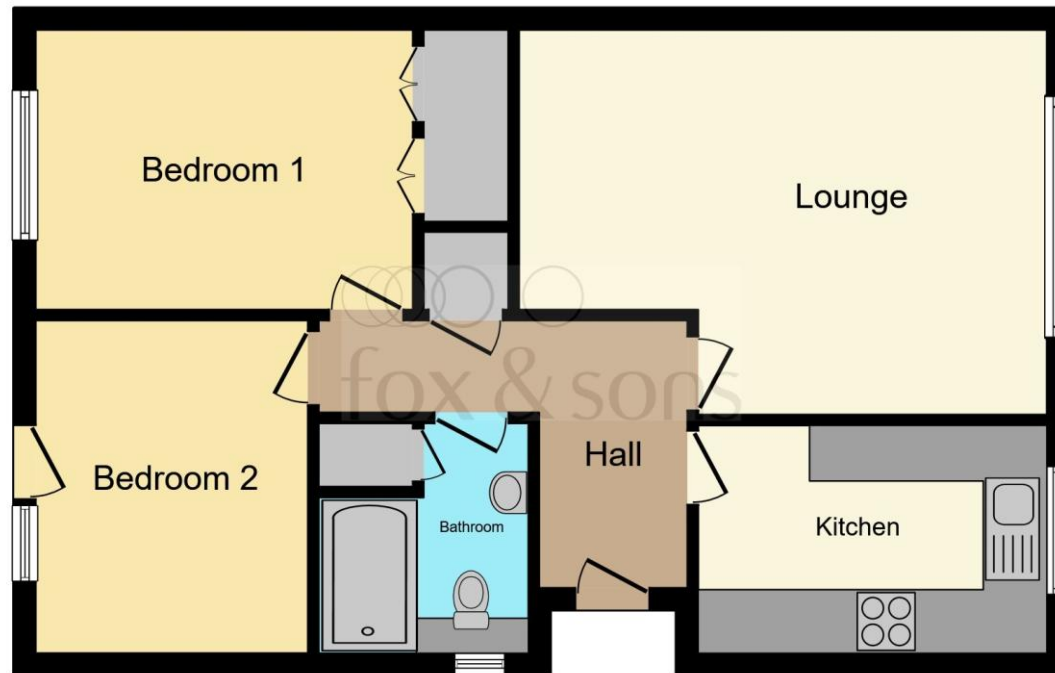
To the rear of the property is an enclosed garden with paved patio, personal door providing access to garage, step and path lead through the garden which is lawned, gravel area, shrub borders, timber arbours, timber garden shed, summerhouse, the garden is bordered by fencing.

Garage

17' 5" x 7' 11" (5.31m x 2.41m)
Up and over door, personal door to rear garden, light and power.

Location

The property is situated within the pretty coastal resort of Minehead, known as the gateway to Exmoor and the start of The South West Coast Path. Minehead offers a good range of day to day amenities, a hospital and schools for all ages including a sixth form college. The rolling hills of Exmoor, Quantock Hills and Brendon Hills are all within easy motoring distance as are the sandy beaches at Blue Anchor. The county town of Taunton is some 24 miles to the south and offers a further range of high street shops, public and state schools and great access links to both the M5 and A303. A direct train link to London Paddington is available from Taunton station in approximately two hours.



This floorplan is for illustrative purposes only and is not drawn to scale. Measurements, floor-areas, openings and orientations are approximate. They should not be relied upon for any purpose and do not form any part of an agreement. No liability is taken for any error or mis-statement. All parties must rely on their own inspections.



view this property online fox-and-sons.co.uk/Property/MIH107681



welcome to

69 West Street, Minehead

- Elevated Position
- Semi-Detached Bungalow
- Well Presented - Two Bedrooms
- Gas Central Heating - Double Glazing
- Garage & Off Street Parking - Gardens

Tenure: Freehold EPC Rating: C

Council Tax Band: C

£269,950



Please note the marker reflects the postcode not the actual property

view this property online fox-and-sons.co.uk/Property/MIH107681



Property Ref:
MIH107681 - 0002

1. MONEY LAUNDERING REGULATIONS Intending purchasers will be asked to produce identification documentation at a later stage and we would ask for your co-operation in order that there is no delay in agreeing the sale. 2. These particulars do not constitute part or all of an offer or contract. 3. The measurements indicated are supplied for guidance only and as such must be considered incorrect. Potential buyers are advised to recheck measurements before committing to any expense. 4. We have not tested any apparatus, equipment, fixtures or services and it is in the buyers interest to check the working condition of any appliances. 5. Where an EPC, or a Home Report (Scotland only) is held for this property, it is available for inspection at the branch by appointment. If you require a printed version of a Home Report, you will need to pay a reasonable production charge reflecting printing and other costs. 6. We are not able to offer an opinion either written or verbal on the content of these reports and this must be obtained from your legal representative. 7. Whilst we take care in preparing these reports, a buyer should ensure that his/her legal representative confirms as soon as possible all matters relating to title including the extent and boundaries of the property and other important matters before exchange of contracts.


fox & sons



01643 702281



minehead@fox-and-sons.co.uk



13 The Parade, MINEHEAD, Somerset, TA24 5NL



fox-and-sons.co.uk