



## EASTFIELDS AVENUE, SW18

£425,000

One bedroom  
Beautiful condition  
Balcony  
Gym and pool access  
Underground parking  
No chain

@marshandparsons  
marshandparsons.co.uk

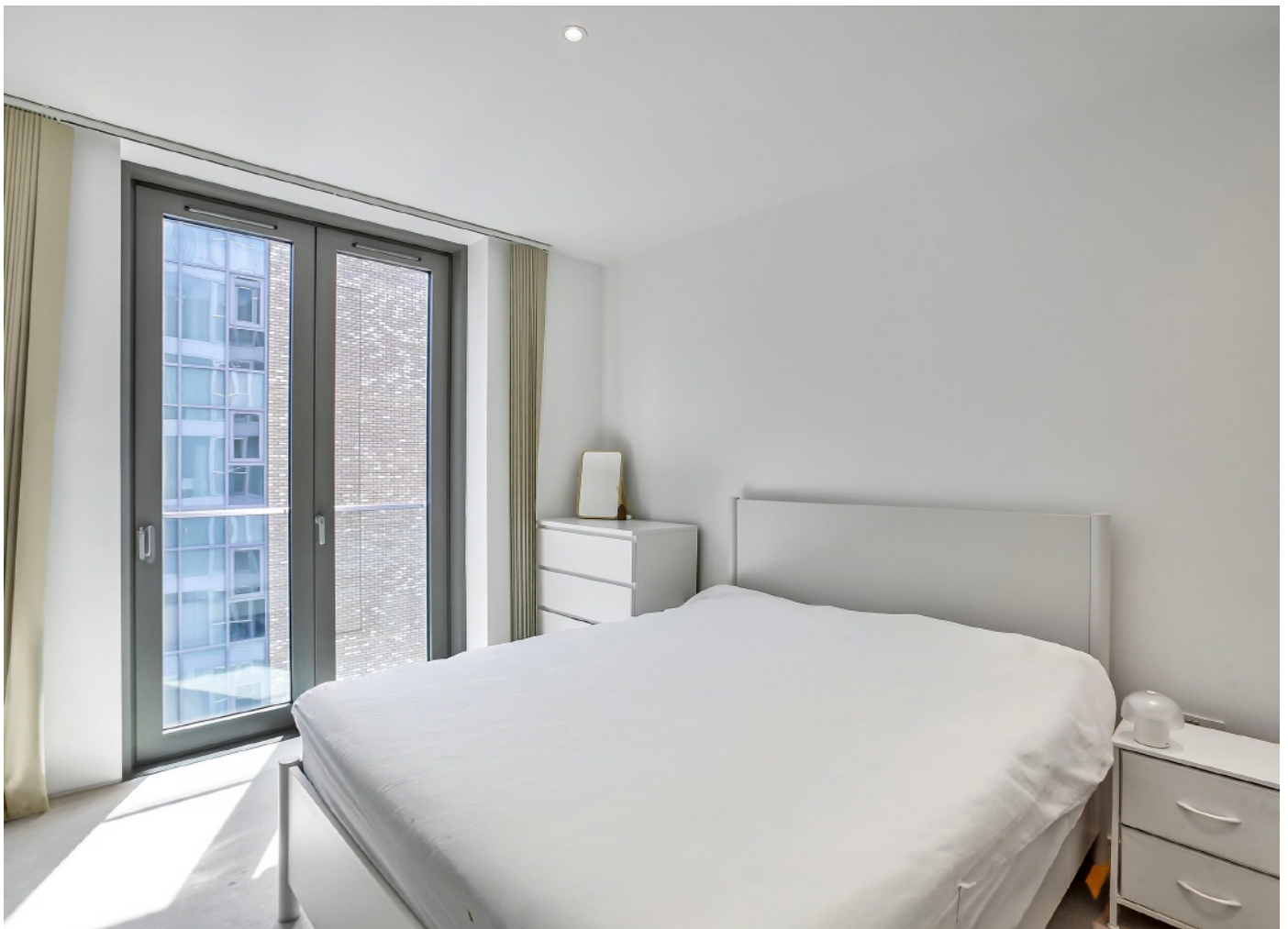
MARSH &  
PARSONS



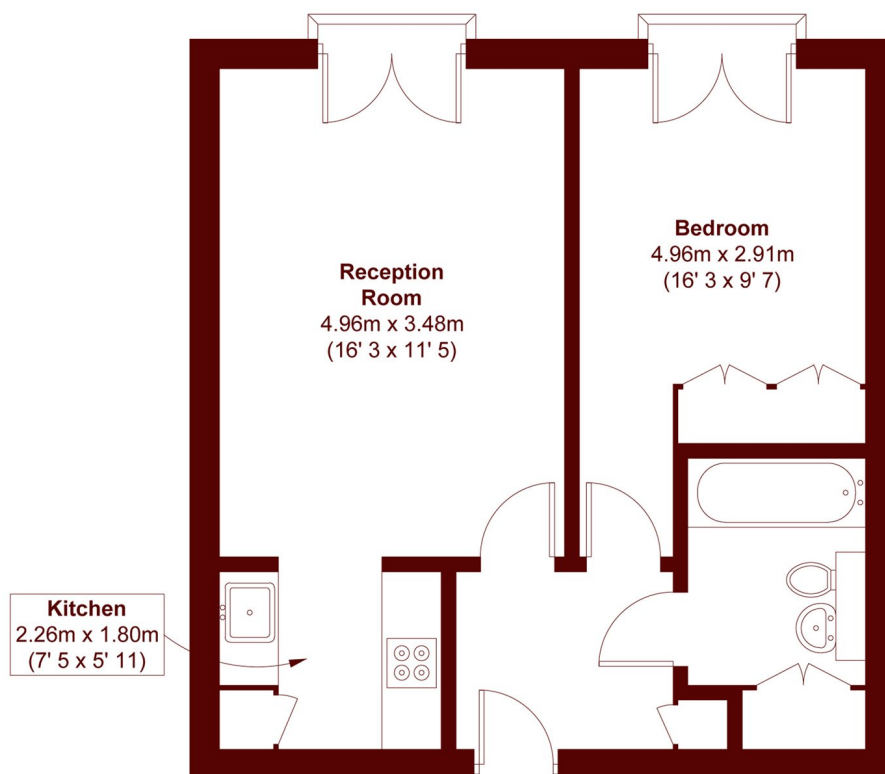
# ABOUT THE PROPERTY

Marsh and Parsons are delighted to present this stunning one bedroom, one bathroom apartment set on the sixth floor (with lift) in the Riverside Quarter with concierge, leisure facilities and underground parking.

Set within the desirable London Borough of Wandsworth, this development offers low council tax, excellent connectivity via Wandsworth Town and East Putney stations, and convenient local amenities, including a grocery store and coffee shop. Wandsworth Park is just a short stroll away.



# STEP INSIDE EASTFIELDS AVENUE



APPROX. GROSS INTERNAL FLOOR AREA = 490 SQFT / 45.5 SQM  
APPROX. GROSS EXTERNAL BALCONY AREA = 2 SQFT / 0.2 SQM

**Barnes & East Sheen**  
020 8563 8333

Energy Rating: C We aim to make our particulars both accurate and reliable. However, they are not guaranteed; nor do they form part of an offer or contract. If you require clarification on any points then please contact us, especially if you're traveling some distance to view. Please note that appliances and heating systems have not been tested and therefore no warranties can be given as to their good working order

**MARSH &  
PARSONS**