



*jordan fishwick*

Falcon Close New Mills High Peak





## Falcon Close New Mills High Peak SK22 4JQ

Guide Price £270,000



### The Property

Located in a popular no-through road and close to open countryside in New Mills, a two bedroom detached true bungalow. Standing in generous gardens with potential to extend (subject to planning permission) and offered for sale with no forward chain. Long driveway and detached garage, pvc double glazing, gas central heating and comprising: entrance hall, living room, dining kitchen, two good sized bedrooms and a shower room. Viewing highly recommended.





- Detached True Bungalow
- Sought After Location
- Convenient Position
- Generous Gardens, Parking and Detached Garage
- No Onward Chain and Close to Open Countryside
- Potential to Extend (subject to planning permission)
- Two Bedrooms

Postcode

SK22 4JQ

EPC Rating

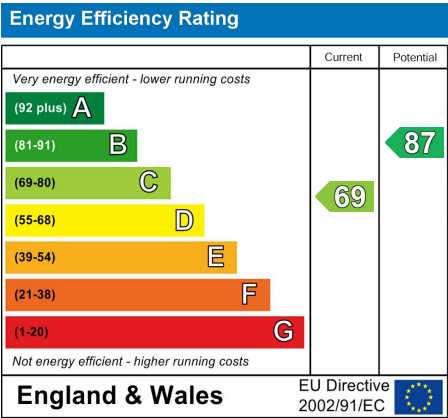
C

Local Authority

High Peak Borough

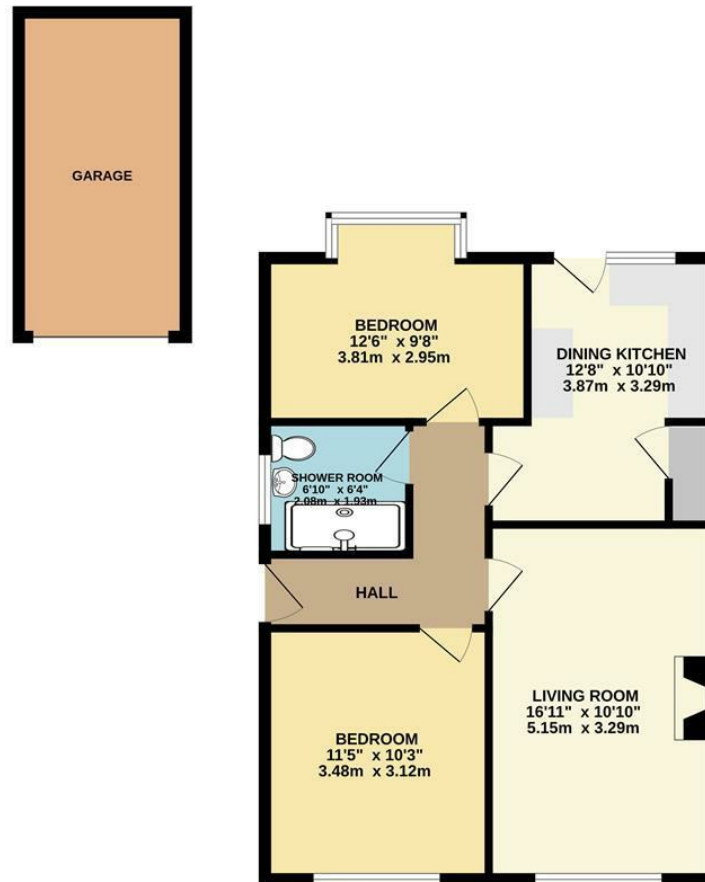
Council Tax

C





# GROUND FLOOR



Whilst every attempt has been made to ensure the accuracy of the floorplan contained here, measurements of doors, windows, rooms and any other items are approximate and no responsibility is taken for any error, omission or mis-statement. This plan is for illustrative purposes only and should be used as such by any prospective purchaser. The services, systems and appliances shown have not been tested and no guarantee is given as to their operability or efficiency can be given.  
Made with Metropix ©2023



These particulars are believed to be accurate but they are not guaranteed and do not form a contract. Neither Jordan Fishwick nor the vendor or lessor accept any responsibility in respect of these particulars, which are not intended to be statements or representations of fact and any intending purchaser or lessee must satisfy himself by inspection or otherwise as to the correctness of each of the statements contained in these particulars. Any floorplans on this brochure are for illustrative purposes only and are not necessarily to scale.

Offices at: Chorlton, Didsbury, Disley, Hale, Glossop, Macclesfield, Manchester Deansgate, Manchester Whitworth Street, New Mills, Sale, Wilmslow and Withington

14 Market St, Disley, Cheshire, Stockport SK12 2AA

01663 767878

disley@jordanfishwick.co.uk

www.jordanfishwick.co.uk