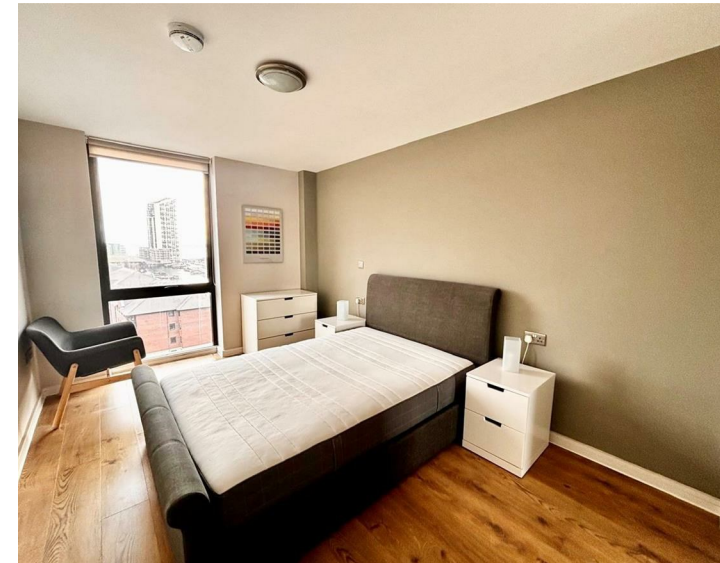
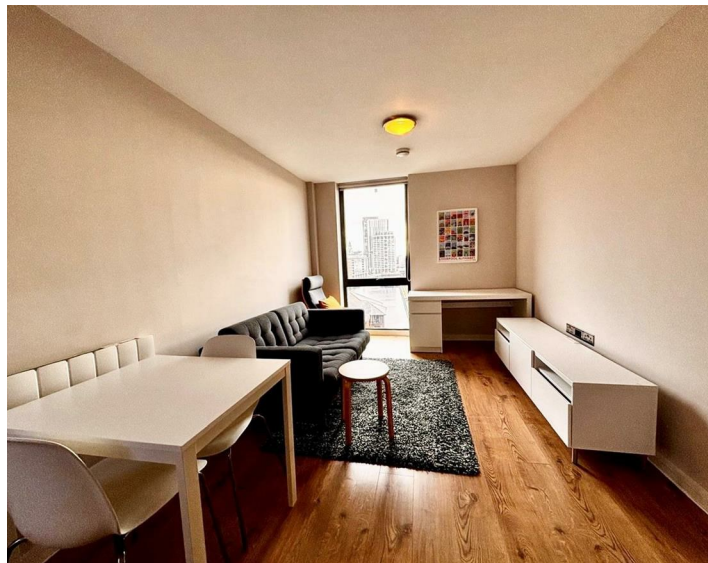




Apt 715, Quay Central 9 Jesse Hartley Way, Liverpool, L3
£900 Per Month

www.
cityresidential
.co.uk



About the Property

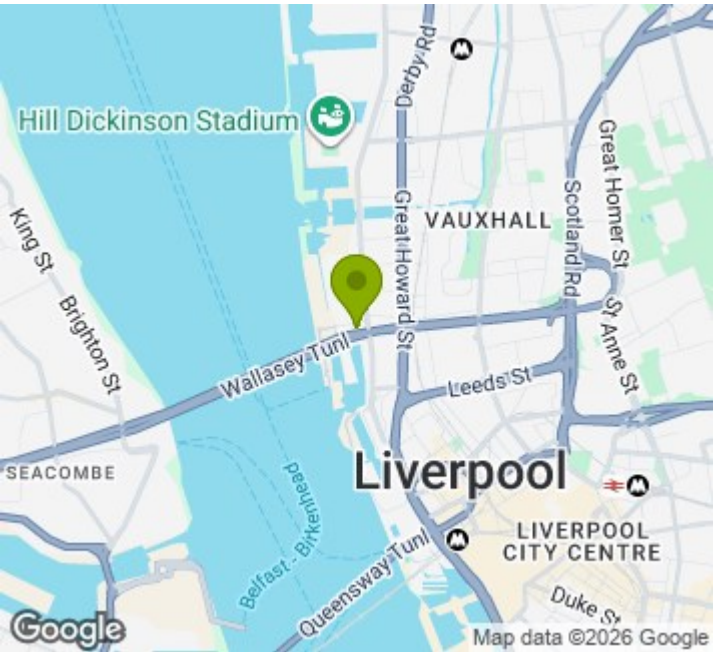
Available now is this well-presented one bedroom apartment located on the 7th floor of Quay Central, 9 Jesse Hartley Way, Liverpool.

This fully furnished apartment offers a bright open-plan living and dining area with modern kitchen, a generously sized double bedroom, and a contemporary bathroom finished to a high standard.

Situated in a popular waterfront development close to Liverpool city centre, local amenities, and excellent transport links.

There is no parking available with this apartment. Ideal for a professional individual or couple seeking stylish city living.

- EPC - C
- Council Tax Band - B
- Deposit Amount - £1038
- Immediate Move In



Energy Efficiency Rating

	Current	Potential
Very energy efficient - lower running costs		
(92 plus) A		
(81-91) B		
(69-80) C	78	78
(55-68) D		
(39-54) E		
(21-38) F		
(1-20) G		
Not energy efficient - higher running costs		
England & Wales	EU Directive 2002/91/EC	



City Residential
81/87 Victoria Street, The Old Haymarket, Liverpool L1 6DG
T: 0151 231 6100 F: 0151 231 6105
E: sales@cityresidential.co.uk



WWW.
cityresidential
.co.uk