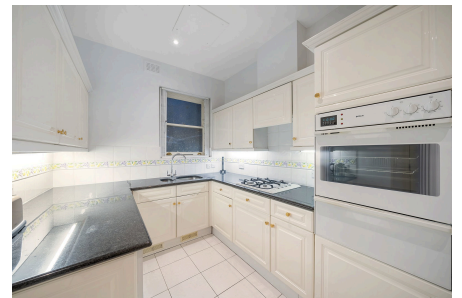




Dover Street, Mayfair, W1S

Guide Price £2,000,000

3 2 1



PLEASE PRESS 1 FOR GEORGE WHEN CALLING - STUNNING 3 BED FIRST FLOOR APARTMENT (1,162 SQ.FT) - GUIDE PRICE £2m - ASKING PRICE £2.4m - SECURE PORTERED MANSION BLOCK WITH LIFT IN A PRIME MAYFAIR LOCATION JUST OFF BERKELEY SQUARE, BRIGHT AND SPACIOUS ACCOMMODATION, HIGH CEILINGS, LARGE RECEPTION/DINING ROOM, WELL EQUIPPED KITCHEN/DINER, FAMILY BATHROOM AND PRINCIPAL EN-SUITE, GAS CENTRAL HEATING, MOMENTS FROM GREEN PARK STATION, SHORT WALK TO WORLD RENOWNED SHOPPING ON REGENTS STREET & OLD BOND STREET AND THE FINE DINING OF MOUNT STREET AND MAYFAIR.

George Fane
georgefane.exp.uk.com
george.fane@exp.uk.com
07522 922 952



Key Features

- STUNNING 3 BED APARTMENT
- FIRST FLOOR (1,162 SQ.FT)
- SECURE MANSION BLOCK WITH CONCIERGE
- PRIME MAYFAIR LOCATION
- BRIGHT AND SPACIOUS ACCOMMODATION
- HIGH CEILINGS
- NO CHAIN
- MOMENTS FROM GREEN PARK STATION
- SHORT WALK TO REGENTS STREET & OLD BOND STREET
- PLEASE PRESS 1 FOR GEORGE ON CALLING

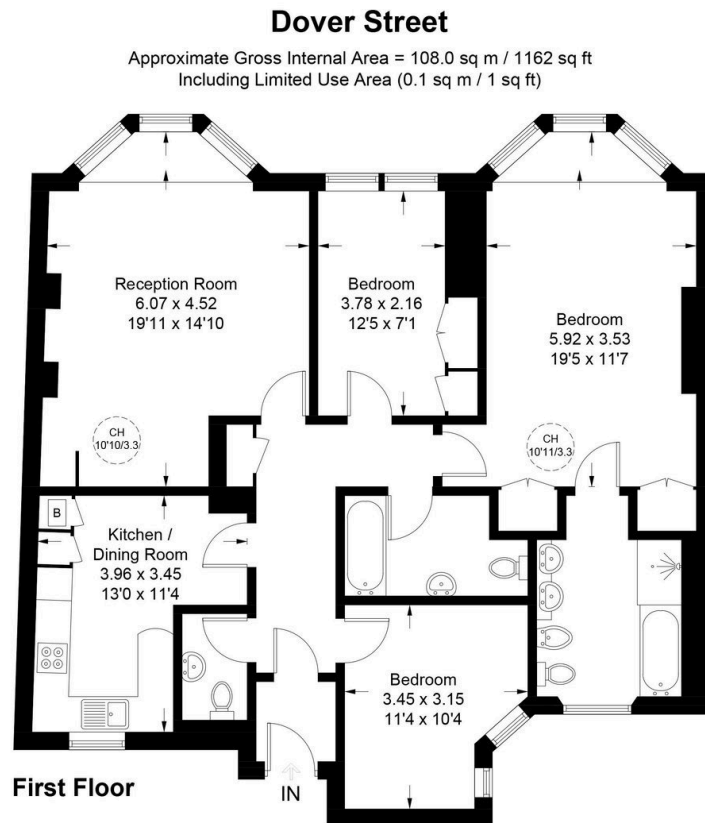


Illustration for identification purposes only, not for valuation purposes, measurements are approximate, not to scale.